

PI3KR2 Antibody (C-term)
Purified Rabbit Polyclonal Antibody (Pab)
Catalog # AP8024b

Specification

PI3KR2 Antibody (C-term) - Product Information

Application	WB, IHC-P,E
Primary Accession	O00459
Other Accession	P23726
Reactivity	Human
Predicted	Bovine
Host	Rabbit
Clonality	Polyclonal
Isotype	Rabbit IgG
Calculated MW	81545
Antigen Region	268-298

PI3KR2 Antibody (C-term) - Additional Information

Gene ID 5296

Other Names

Phosphatidylinositol 3-kinase regulatory subunit beta, PI3-kinase regulatory subunit beta, PI3K regulatory subunit beta, PtdIns-3-kinase regulatory subunit beta, Phosphatidylinositol 3-kinase 85 kDa regulatory subunit beta, PI3-kinase subunit p85-beta, PtdIns-3-kinase regulatory subunit p85-beta, PIK3R2

Target/Specificity

This PI3KR2 antibody is generated from rabbits immunized with a KLH conjugated synthetic peptide between 268-298 amino acids from the C-terminal region of human PI3KR2.

Dilution

WB~~1:1000
IHC-P~~1:50~100

Format

Purified polyclonal antibody supplied in PBS with 0.09% (W/V) sodium azide. This antibody is prepared by Saturated Ammonium Sulfate (SAS) precipitation followed by dialysis against PBS.

Storage

Maintain refrigerated at 2-8°C for up to 2 weeks. For long term storage store at -20°C in small aliquots to prevent freeze-thaw cycles.

Precautions

PI3KR2 Antibody (C-term) is for research use only and not for use in diagnostic or therapeutic procedures.

PI3KR2 Antibody (C-term) - Protein Information

Name PIK3R2

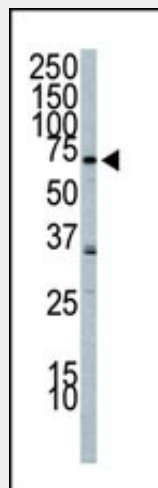
Function Regulatory subunit of phosphoinositide-3-kinase (PI3K), a kinase that phosphorylates PtdIns(4,5)P₂ (Phosphatidylinositol 4,5- bisphosphate) to generate phosphatidylinositol 3,4,5-trisphosphate (PIP₃). PIP₃ plays a key role by recruiting PH domain-containing proteins to the membrane, including AKT1 and PDK1, activating signaling cascades involved in cell growth, survival, proliferation, motility and morphology. Binds to activated (phosphorylated) protein-tyrosine kinases, through its SH2 domain, and acts as an adapter, mediating the association of the p110 catalytic unit to the plasma membrane. Indirectly regulates autophagy (PubMed:[23604317](#)). Promotes nuclear translocation of XBP1 isoform 2 in a ER stress- and/or insulin- dependent manner during metabolic overloading in the liver and hence plays a role in glucose tolerance improvement (By similarity).

PI3KR2 Antibody (C-term) - Protocols

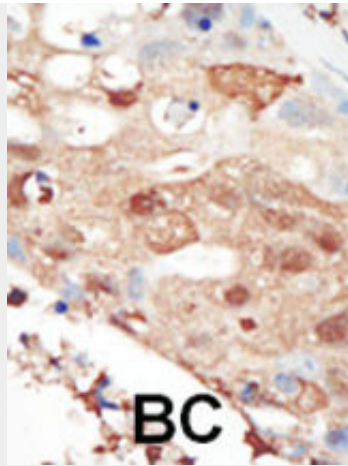
Provided below are standard protocols that you may find useful for product applications.

- [Western Blot](#)
- [Blocking Peptides](#)
- [Dot Blot](#)
- [Immunohistochemistry](#)
- [Immunofluorescence](#)
- [Immunoprecipitation](#)
- [Flow Cytometry](#)
- [Cell Culture](#)

PI3KR2 Antibody (C-term) - Images



Western blot analysis of anti-PI3KR2 Pab (Cat. #8024b) in A549 cell lysate. PI3KR2 (arrow) was detected using purified Pab. Secondary HRP-anti-rabbit was used for signal visualization with chemiluminescence.



Formalin-fixed and paraffin-embedded human cancer tissue reacted with the primary antibody, which was peroxidase-conjugated to the secondary antibody, followed by AEC staining. This data demonstrates the use of this antibody for immunohistochemistry; clinical relevance has not been evaluated. BC = breast carcinoma; HC = hepatocarcinoma.

PI3KR2 Antibody (C-term) - Background

PI3KR2 binds to activated (phosphorylated) protein-tyrosine kinases, through its SH2 domain, and acts as an adapter, mediating the association of the p110 catalytic unit to the plasma membrane.

PI3KR2 Antibody (C-term) - References

- Janssen, J.W., et al., *Oncogene* 16(13):1767-1772 (1998).
Volinia, S., et al., *Oncogene* 7(4):789-793 (1992).
Carpenter, C.L., et al., *J. Biol. Chem.* 265(32):19704-19711 (1990).