

**RPS6KB2 Antibody (Center)**  
**Purified Rabbit Polyclonal Antibody (Pab)**  
**Catalog # AP8009c**

**Specification**

---

**RPS6KB2 Antibody (Center) - Product Information**

Application	WB,E
Primary Accession	<a href="#">O9UBS0</a>
Reactivity	Human, Rat
Host	Rabbit
Clonality	Polyclonal
Isotype	Rabbit IgG
Antigen Region	243-272

**RPS6KB2 Antibody (Center) - Additional Information**

**Gene ID** 6199

**Other Names**

Ribosomal protein S6 kinase beta-2, S6K-beta-2, S6K2, 70 kDa ribosomal protein S6 kinase 2, P70S6K2, p70-S6K 2, S6 kinase-related kinase, SRK, Serine/threonine-protein kinase 14B, p70 ribosomal S6 kinase beta, S6K-beta, p70 S6 kinase beta, p70 S6K-beta, p70 S6KB, p70-beta, RPS6KB2, STK14B

**Target/Specificity**

This RPS6KB2 antibody is generated from rabbits immunized with a KLH conjugated synthetic peptide between 243-272 amino acids from the Central region of human RPS6KB2.

**Dilution**

WB~~1:1000

**Format**

Purified polyclonal antibody supplied in PBS with 0.09% (W/V) sodium azide. This antibody is prepared by Saturated Ammonium Sulfate (SAS) precipitation followed by dialysis against PBS.

**Storage**

Maintain refrigerated at 2-8°C for up to 2 weeks. For long term storage store at -20°C in small aliquots to prevent freeze-thaw cycles.

**Precautions**

RPS6KB2 Antibody (Center) is for research use only and not for use in diagnostic or therapeutic procedures.

**RPS6KB2 Antibody (Center) - Protein Information**

**Name** RPS6KB2

**Synonyms** STK14B

**Function** Phosphorylates specifically ribosomal protein S6 (PubMed:[29750193](#)). Seems to act downstream of mTOR signaling in response to growth factors and nutrients to promote cell proliferation, cell growth and cell cycle progression in an alternative pathway regulated by MEAK7 (PubMed:[29750193](#)).

#### **Cellular Location**

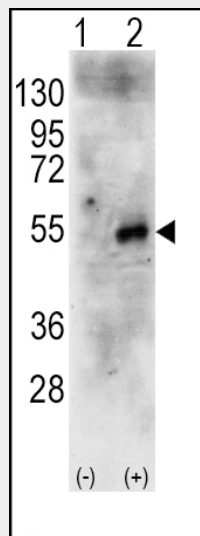
Cytoplasm. Nucleus.

#### **RPS6KB2 Antibody (Center) - Protocols**

Provided below are standard protocols that you may find useful for product applications.

- [Western Blot](#)
- [Blocking Peptides](#)
- [Dot Blot](#)
- [Immunohistochemistry](#)
- [Immunofluorescence](#)
- [Immunoprecipitation](#)
- [Flow Cytometry](#)
- [Cell Culture](#)

#### **RPS6KB2 Antibody (Center) - Images**



Western blot analysis of RPS6KB2 (arrow) using rabbit polyclonal RPS6KB2 Antibody (Center) (RB11689). 293 cell lysates (2 ug/lane) either nontransfected (Lane 1) or transiently transfected with the human RPS6KB2 gene (Lane 2) (Origene Technologies).

#### **RPS6KB2 Antibody (Center) - Background**

RPS6KB2 is a member of the RSK (ribosomal S6 kinase) family of serine/threonine kinases. This kinase contains 2 nonidentical kinase catalytic domains and phosphorylates the S6 ribosomal protein and eucaryotic translation initiation factor 4B. Phosphorylation of S6 leads to an increase in protein synthesis and cell proliferation.

#### **RPS6KB2 Antibody (Center) - References**

Strausberg, R.L., et al., Proc. Natl. Acad. Sci. U.S.A. 99(26):16899-16903 (2002).

Lee-Fruman, K.K., et al., Oncogene 18(36):5108-5114 (1999).

Saitoh, M., et al., Biochem. Biophys. Res. Commun. 253(2):470-476 (1998).

Gout, I., et al., J. Biol. Chem. 273(46):30061-30064 (1998).

**RPS6KB2 Antibody (Center) - Citations**

- [miR-1273g-3p promotes proliferation, migration and invasion of LoVo cells via cannabinoid receptor 1 through activation of ERBB4/PIK3R3/mTOR/S6K2 signaling pathway.](#)