

**LHB Antibody (C-term)**  
**Purified Rabbit Polyclonal Antibody (Pab)**  
**Catalog # AP7982b****Specification**

---

**LHB Antibody (C-term) - Product Information**

Application	<b>WB, IHC-P,E</b>
Primary Accession	<a href="#">P01229</a>
Reactivity	<b>Human</b>
Host	<b>Rabbit</b>
Clonality	<b>Polyclonal</b>
Isotype	<b>Rabbit IgG</b>
Calculated MW	<b>15345</b>
Antigen Region	<b>78-104</b>

**LHB Antibody (C-term) - Additional Information****Gene ID** 3972**Other Names**

Lutropin subunit beta, Lutropin beta chain, Luteinizing hormone subunit beta, LH-B, LSH-B, LSH-beta, LHB

**Target/Specificity**

This LHB antibody is generated from rabbits immunized with a KLH conjugated synthetic peptide between 78-104 amino acids from the C-terminal region of human LHB.

**Dilution**WB~~1:1000  
IHC-P~~1:10~50**Format**

Purified polyclonal antibody supplied in PBS with 0.09% (W/V) sodium azide. This antibody is prepared by Saturated Ammonium Sulfate (SAS) precipitation followed by dialysis against PBS.

**Storage**

Maintain refrigerated at 2-8°C for up to 2 weeks. For long term storage store at -20°C in small aliquots to prevent freeze-thaw cycles.

**Precautions**

LHB Antibody (C-term) is for research use only and not for use in diagnostic or therapeutic procedures.

**LHB Antibody (C-term) - Protein Information****Name** LHB**Function** Promotes spermatogenesis and ovulation by stimulating the testes and ovaries to

synthesize steroids.

**Cellular Location**  
Secreted.

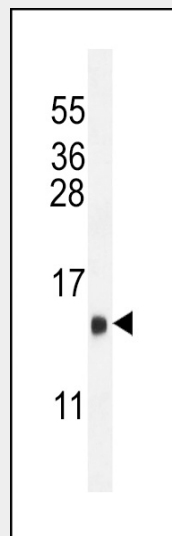
**Tissue Location**  
Pituitary gland.

### LHB Antibody (C-term) - Protocols

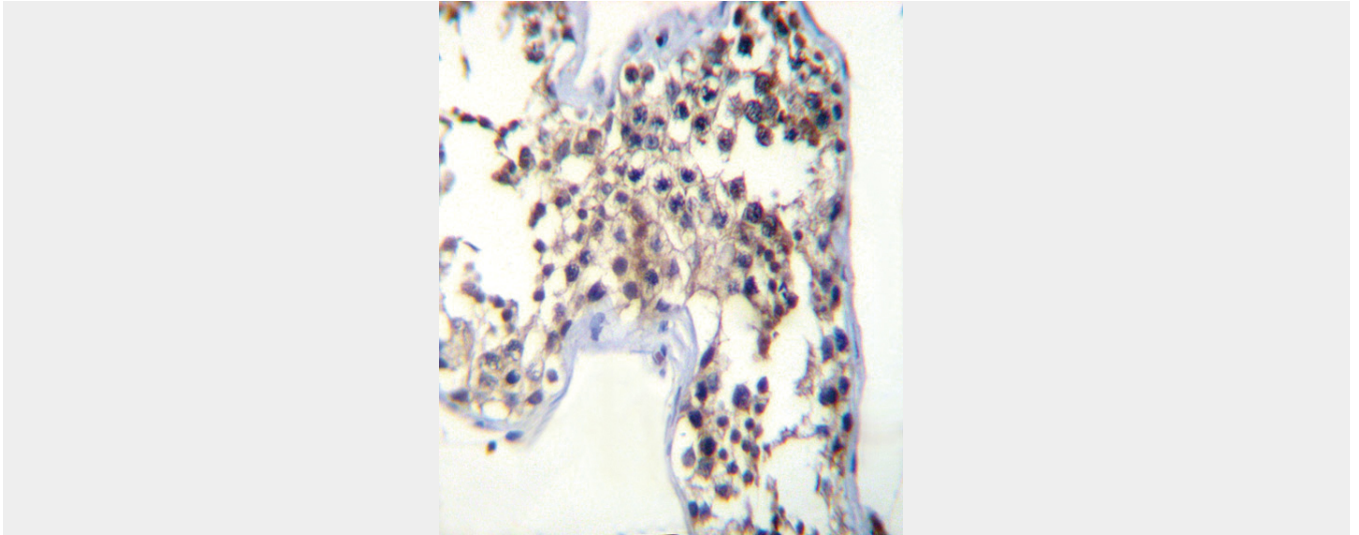
Provided below are standard protocols that you may find useful for product applications.

- [Western Blot](#)
- [Blocking Peptides](#)
- [Dot Blot](#)
- [Immunohistochemistry](#)
- [Immunofluorescence](#)
- [Immunoprecipitation](#)
- [Flow Cytometry](#)
- [Cell Culture](#)

### LHB Antibody (C-term) - Images



LHB Antibody (C-term) (Cat. #AP7982b) western blot analysis in mouse heart tissue lysates (35ug/lane). This demonstrates the LHB antibody detected the LHB protein (arrow).



LHB Antibody (C-term) (Cat. #AP7982b) immunohistochemistry analysis in formalin fixed and paraffin embedded human testis tissue followed by peroxidase conjugation of the secondary antibody and DAB staining. This data demonstrates the use of LHB Antibody (C-term) for immunohistochemistry. Clinical relevance has not been evaluated.

#### **LHB Antibody (C-term) - Background**

LHB is a member of the glycoprotein hormone beta chain family and is the beta subunit of luteinizing hormone (LH). Glycoprotein hormones are heterodimers consisting of a common alpha subunit and a unique beta subunit which confers biological specificity. LH is expressed in the pituitary gland and promotes spermatogenesis and ovulation by stimulating the testes and ovaries to synthesize steroids.

#### **LHB Antibody (C-term) - References**

Lofrano-Porto, A., N. Engl. J. Med. 357 (9), 897-904 (2007)  
Liu, S., Endocr. J. 52 (6), 781-784 (2005)  
Keutmann, H.T., Mol. Endocrinol. 6 (6), 904-913 (1992)