

**MEKK6 Antibody (C-term)**  
**Purified Rabbit Polyclonal Antibody (Pab)**  
**Catalog # AP7912a**

**Specification**

---

**MEKK6 Antibody (C-term) - Product Information**

Application	WB, IHC-P,E
Primary Accession	<a href="#">O95382</a>
Reactivity	Human, Mouse
Host	Rabbit
Clonality	Polyclonal
Isotype	Rabbit IgG
Antigen Region	1028-1058

**MEKK6 Antibody (C-term) - Additional Information**

**Gene ID** 9064

**Other Names**

Mitogen-activated protein kinase kinase kinase 6, Apoptosis signal-regulating kinase 2, MAP3K6, ASK2, MAPKKK6, MEKK6

**Target/Specificity**

This MEKK6 antibody is generated from rabbits immunized with a KLH conjugated synthetic peptide between 1028-1058 amino acids from the C-terminal region of human MEKK6.

**Dilution**

WB~~1:1000  
IHC-P~~1:50~100

**Format**

Purified polyclonal antibody supplied in PBS with 0.09% (W/V) sodium azide. This antibody is prepared by Saturated Ammonium Sulfate (SAS) precipitation followed by dialysis against PBS.

**Storage**

Maintain refrigerated at 2-8°C for up to 2 weeks. For long term storage store at -20°C in small aliquots to prevent freeze-thaw cycles.

**Precautions**

MEKK6 Antibody (C-term) is for research use only and not for use in diagnostic or therapeutic procedures.

**MEKK6 Antibody (C-term) - Protein Information**

**Name** MAP3K6

**Synonyms** ASK2, MAPKKK6, MEKK6

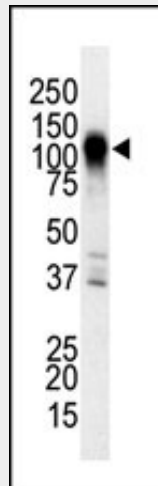
**Function** Component of a protein kinase signal transduction cascade. Activates the JNK, but not ERK or p38 kinase pathways.

### MEKK6 Antibody (C-term) - Protocols

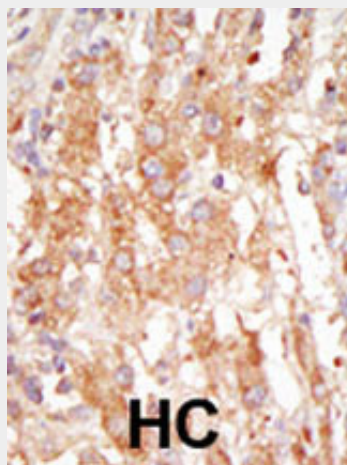
Provided below are standard protocols that you may find useful for product applications.

- [Western Blot](#)
- [Blocking Peptides](#)
- [Dot Blot](#)
- [Immunohistochemistry](#)
- [Immunofluorescence](#)
- [Immunoprecipitation](#)
- [Flow Cytometry](#)
- [Cell Culture](#)

### MEKK6 Antibody (C-term) - Images



The anti-MEKK6 Pab (Cat. #AP7912a) is used in Western blot to detect MEKK6 in NIH3T3 cell lysate.



Formalin-fixed and paraffin-embedded human cancer tissue reacted with the primary antibody, which was peroxidase-conjugated to the secondary antibody, followed by DAB staining. This data

demonstrates the use of this antibody for immunohistochemistry; clinical relevance has not been evaluated. BC = breast carcinoma; HC = hepatocarcinoma.

#### **MEKK6 Antibody (C-term) - Background**

Mitogen-activated protein kinase (MAPK) signaling cascades include MAPK or extracellular signal-regulated kinase (ERK), MAPK kinase (MKK or MEK), and MAPK kinase kinase (MAPKKK or MEKK). MAPKK kinase/MEKK phosphorylates and activates its downstream protein kinase, MAPK kinase/MEK, which in turn activates MAPK. The kinases of these signaling cascades are highly conserved, and homologs exist in yeast, Drosophila, and mammalian cells. MEKK6 activates the JNK, but not ERK or p38 kinase pathways.

#### **MEKK6 Antibody (C-term) - References**

Wang, X.S., et al., Biochem. Biophys. Res. Commun. 253(1):33-37 (1998).

#### **MEKK6 Antibody (C-term) - Citations**

- [Protein profiling in human sera for identification of potential lung cancer biomarkers using antibody microarray.](#)