

**CDC25C Antibody (C-term)**  
**Purified Rabbit Polyclonal Antibody (Pab)**  
**Catalog # AP7862b**

**Specification**

---

**CDC25C Antibody (C-term) - Product Information**

Application	WB,E
Primary Accession	<a href="#">P30307</a>
Reactivity	Human
Host	Rabbit
Clonality	Polyclonal
Isotype	Rabbit IgG
Calculated MW	53365
Antigen Region	376-402

**CDC25C Antibody (C-term) - Additional Information**

**Gene ID** 995

**Other Names**

M-phase inducer phosphatase 3, Dual specificity phosphatase Cdc25C, CDC25C

**Target/Specificity**

This CDC25C antibody is generated from rabbits immunized with a KLH conjugated synthetic peptide between 376-402 amino acids from the C-terminal region of human CDC25C.

**Dilution**

WB~~1:1000

**Format**

Purified polyclonal antibody supplied in PBS with 0.09% (W/V) sodium azide. This antibody is prepared by Saturated Ammonium Sulfate (SAS) precipitation followed by dialysis against PBS.

**Storage**

Maintain refrigerated at 2-8°C for up to 2 weeks. For long term storage store at -20°C in small aliquots to prevent freeze-thaw cycles.

**Precautions**

CDC25C Antibody (C-term) is for research use only and not for use in diagnostic or therapeutic procedures.

**CDC25C Antibody (C-term) - Protein Information**

**Name** CDC25C

**Function** Functions as a dosage-dependent inducer in mitotic control. Tyrosine protein phosphatase required for progression of the cell cycle (PubMed:[8119945](#)). When phosphorylated, highly effective in activating G2 cells into prophase (PubMed:[8119945](#)). Directly dephosphorylates

CDK1 and activates its kinase activity (PubMed:[8119945](#)).

### Cellular Location

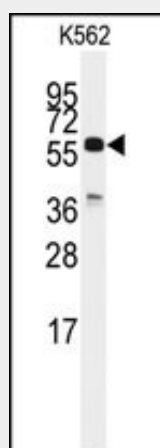
Nucleus

### CDC25C Antibody (C-term) - Protocols

Provided below are standard protocols that you may find useful for product applications.

- [Western Blot](#)
- [Blocking Peptides](#)
- [Dot Blot](#)
- [Immunohistochemistry](#)
- [Immunofluorescence](#)
- [Immunoprecipitation](#)
- [Flow Cytometry](#)
- [Cell Culture](#)

### CDC25C Antibody (C-term) - Images



Western blot analysis of anti-CDC25C Antibody (C-term) (Cat.#AP7862b) in K562 cell line lysates (35ug/lane). CDC25C (arrow) was detected using the purified Pab.

### CDC25C Antibody (C-term) - Background

CDC25C is a tyrosine phosphatase and belongs to the Cdc25 phosphatase family. It directs dephosphorylation of cyclin B-bound CDC2 and triggers entry into mitosis. It is also thought to suppress p53-induced growth arrest.

### CDC25C Antibody (C-term) - References

- Varmeh, S., Mol. Cancer Ther. 7 (12), 3789-3799 (2008)  
Long, J.M., Cell Cycle 7 (19), 3062-3073 (2008)  
Bonnet, J., Cell Cycle 7 (13), 1991-1998 (2008)