

**BRAF Antibody**  
**Affinity Purified Rabbit Polyclonal Antibody (Pab)**  
**Catalog # AP7810n**

**Specification**

---

**BRAF Antibody - Product Information**

Application	<b>WB, FC,E</b>
Primary Accession	<a href="#">P15056</a>
Reactivity	<b>Human</b>
Host	<b>Rabbit</b>
Clonality	<b>Polyclonal</b>
Isotype	<b>Rabbit IgG</b>

**BRAF Antibody - Additional Information**

**Gene ID** 673

**Other Names**

Serine/threonine-protein kinase B-raf, Proto-oncogene B-Raf, p94, v-Raf murine sarcoma viral oncogene homolog B1, BRAF, BRAF1, RAFB1

**Target/Specificity**

This BRAF antibody is generated from rabbits immunized with BRAF recombinant protein.

**Dilution**

WB~~1:1000  
FC~~1:10~50

**Format**

Purified polyclonal antibody supplied in PBS with 0.09% (W/V) sodium azide. This antibody is purified through a protein A column, followed by peptide affinity purification.

**Storage**

Maintain refrigerated at 2-8°C for up to 2 weeks. For long term storage store at -20°C in small aliquots to prevent freeze-thaw cycles.

**Precautions**

BRAF Antibody is for research use only and not for use in diagnostic or therapeutic procedures.

**BRAF Antibody - Protein Information**

**Name** BRAF ([HGNC:1097](#))

**Synonyms** BRAF1, RAFB1

**Function** Protein kinase involved in the transduction of mitogenic signals from the cell membrane to the nucleus (Probable). Phosphorylates MAP2K1, and thereby activates the MAP kinase signal transduction pathway (PubMed:[21441910](#), PubMed:[29433126](#)). Phosphorylates PFKFB2

(PubMed:[36402789](#)). May play a role in the postsynaptic responses of hippocampal neurons (PubMed:[1508179](#)).

#### Cellular Location

Nucleus. Cytoplasm. Cell membrane. Note=Colocalizes with RGS14 and RAF1 in both the cytoplasm and membranes.

#### Tissue Location

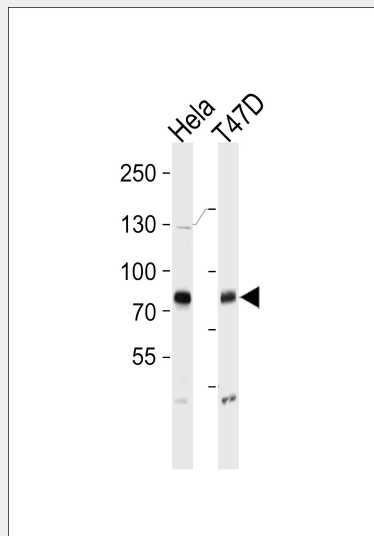
Brain and testis.

### BRAF Antibody - Protocols

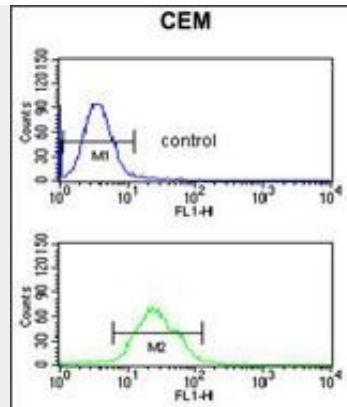
Provided below are standard protocols that you may find useful for product applications.

- [Western Blot](#)
- [Blocking Peptides](#)
- [Dot Blot](#)
- [Immunohistochemistry](#)
- [Immunofluorescence](#)
- [Immunoprecipitation](#)
- [Flow Cytometry](#)
- [Cell Culture](#)

### BRAF Antibody - Images



BRAF Antibody (Cat. #AP7810n) western blot analysis in HeLa, T47D cell line lysates (35ug/lane). This demonstrates the BRAF antibody detected the BRAF protein (arrow).



BRAF Antibody (Cat. #AP7810n) flow cytometric analysis of CEM cells (bottom histogram) compared to a negative control cell (top histogram). FITC-conjugated goat-anti-rabbit secondary antibodies were used for the analysis.

### **BRAF Antibody - Background**

BRAF, a member of the RAF subfamily of Ser/Thr protein kinases, is involved in the transduction of mitogenic signals from the cell membrane to the nucleus. It may play a role in the postsynaptic responses of hippocampal neurons. This cytoplasmic protein is expressed in brain and testis. Defects in BRAF are involved in a wide range of cancers including lung cancer and non-Hodgkin lymphoma (NHL). This protein contains 1 zinc-dependent phorbol-ester and DAG binding domain.

### **BRAF Antibody - References**

- Hingorani, S.R., et al., *Cancer Res.* 63(17):5198-5202 (2003).
- Lee, J.W., et al., *Br. J. Cancer* 89(10):1958-1960 (2003).
- Davies, H., et al., *Nature* 417(6892):949-954 (2002).
- Naoki, K., et al., *Cancer Res.* 62(23):7001-7003 (2002).
- Stephens, R.M., et al., *Mol. Cell. Biol.* 12(9):3733-3742 (1992).

### **BRAF Antibody - Citations**

- [BRAF drives synovial fibroblast transformation in rheumatoid arthritis.](#)