

B-RAF Antibody (S601)
Affinity Purified Rabbit Polyclonal Antibody (Pab)
Catalog # AP7810j

Specification

B-RAF Antibody (S601) - Product Information

Application	WB, IHC-P,E
Primary Accession	P15056
Other Accession	P28028 , Q04982
Reactivity	Human
Predicted	Chicken, Mouse
Host	Rabbit
Clonality	Polyclonal
Isotype	Rabbit IgG
Antigen Region	580-609

B-RAF Antibody (S601) - Additional Information

Gene ID 673

Other Names

Serine/threonine-protein kinase B-raf, Proto-oncogene B-Raf, p94, v-Raf murine sarcoma viral oncogene homolog B1, BRAF, BRAF1, RAFB1

Target/Specificity

This B-RAF antibody is generated from rabbits immunized with a KLH conjugated synthetic peptide between 580-609 amino acids from human B-RAF.

Dilution

WB~~1:1000
IHC-P~~1:10~50

Format

Purified polyclonal antibody supplied in PBS with 0.09% (W/V) sodium azide. This antibody is purified through a protein A column, followed by peptide affinity purification.

Storage

Maintain refrigerated at 2-8°C for up to 2 weeks. For long term storage store at -20°C in small aliquots to prevent freeze-thaw cycles.

Precautions

B-RAF Antibody (S601) is for research use only and not for use in diagnostic or therapeutic procedures.

B-RAF Antibody (S601) - Protein Information

Name BRAF ([HGNC:1097](#))

Synonyms BRAF1, RAFB1

Function Protein kinase involved in the transduction of mitogenic signals from the cell membrane to the nucleus (Probable). Phosphorylates MAP2K1, and thereby activates the MAP kinase signal transduction pathway (PubMed:[21441910](#), PubMed:[29433126](#)). Phosphorylates PFKFB2 (PubMed:[36402789](#)). May play a role in the postsynaptic responses of hippocampal neurons (PubMed:[1508179](#)).

Cellular Location

Nucleus. Cytoplasm. Cell membrane. Note=Colocalizes with RGS14 and RAF1 in both the cytoplasm and membranes.

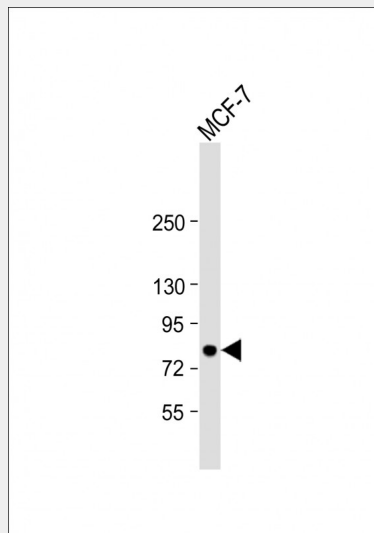
Tissue Location

Brain and testis.

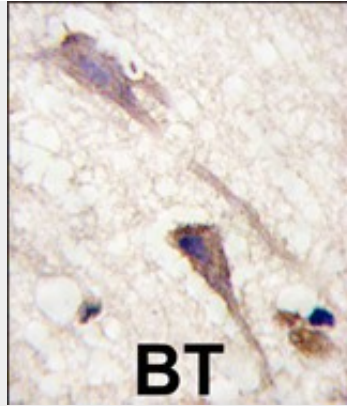
B-RAF Antibody (S601) - Protocols

Provided below are standard protocols that you may find useful for product applications.

- [Western Blot](#)
- [Blocking Peptides](#)
- [Dot Blot](#)
- [Immunohistochemistry](#)
- [Immunofluorescence](#)
- [Immunoprecipitation](#)
- [Flow Cytometry](#)
- [Cell Culture](#)

B-RAF Antibody (S601) - Images

Anti-BRAF Antibody (S601) at 1:1000 dilution + MCF-7 whole cell lysate Lysates/proteins at 20 µg per lane. Secondary Goat Anti-Rabbit IgG, (H+L), Peroxidase conjugated at 1/10000 dilution. Predicted band size : 84 kDa Blocking/Dilution buffer: 5% NFDN/TBST.



Formalin-fixed and paraffin-embedded human brain tissue reacted with BRAF Antibody (S602) (Cat.#AP7810j), which was peroxidase-conjugated to the secondary antibody, followed by DAB staining. This data demonstrates the use of this antibody for immunohistochemistry; clinical relevance has not been evaluated.

B-RAF Antibody (S601) - Background

BRAF, a member of the RAF subfamily of Ser/Thr protein kinases, is involved in the transduction of mitogenic signals from the cell membrane to the nucleus. It may play a role in the postsynaptic responses of hippocampal neurons. This cytoplasmic protein is expressed in brain and testis. Defects in BRAF are involved in a wide range of cancers including lung cancer and non-Hodgkin lymphoma (NHL). This protein contains 1 zinc-dependent phorbol-ester and DAG binding domain.

B-RAF Antibody (S601) - References

Hingorani, S.R., et al., *Cancer Res.* 63(17):5198-5202 (2003).
Lee, J.W., et al., *Br. J. Cancer* 89(10):1958-1960 (2003).
Davies, H., et al., *Nature* 417(6892):949-954 (2002).
Naoki, K., et al., *Cancer Res.* 62(23):7001-7003 (2002).
Stephens, R.M., et al., *Mol. Cell. Biol.* 12(9):3733-3742 (1992).