

B-RAF Antibody (Center)
Purified Rabbit Polyclonal Antibody (Pab)
Catalog # AP7810C**Specification**

B-RAF Antibody (Center) - Product Information

Application	IF, WB, IHC-P, FC,E
Primary Accession	P15056
Other Accession	P28028 , Q04982
Reactivity	Human
Predicted	Chicken, Mouse
Host	Rabbit
Clonality	Polyclonal
Isotype	Rabbit IgG
Calculated MW	84437
Antigen Region	424-453

B-RAF Antibody (Center) - Additional Information**Gene ID** 673**Other Names**

Serine/threonine-protein kinase B-raf, Proto-oncogene B-Raf, p94, v-Raf murine sarcoma viral oncogene homolog B1, BRAF, BRAF1, RAFB1

Target/Specificity

This B-RAF antibody is generated from rabbits immunized with a KLH conjugated synthetic peptide between 424-453 amino acids from the Central region of human B-RAF.

DilutionIF~~1:10~50
WB~~1:1000
IHC-P~~1:10~50
FC~~1:10~50**Format**

Purified polyclonal antibody supplied in PBS with 0.09% (W/V) sodium azide. This antibody is prepared by Saturated Ammonium Sulfate (SAS) precipitation followed by dialysis against PBS.

Storage

Maintain refrigerated at 2-8°C for up to 2 weeks. For long term storage store at -20°C in small aliquots to prevent freeze-thaw cycles.

Precautions

B-RAF Antibody (Center) is for research use only and not for use in diagnostic or therapeutic procedures.

B-RAF Antibody (Center) - Protein Information

Name BRAF ([HGNC:1097](#))

Synonyms BRAF1, RAFB1

Function Protein kinase involved in the transduction of mitogenic signals from the cell membrane to the nucleus (Probable). Phosphorylates MAP2K1, and thereby activates the MAP kinase signal transduction pathway (PubMed:[21441910](#), PubMed:[29433126](#)). Phosphorylates PFKFB2 (PubMed:[36402789](#)). May play a role in the postsynaptic responses of hippocampal neurons (PubMed:[1508179](#)).

Cellular Location

Nucleus. Cytoplasm. Cell membrane. Note=Colocalizes with RGS14 and RAF1 in both the cytoplasm and membranes.

Tissue Location

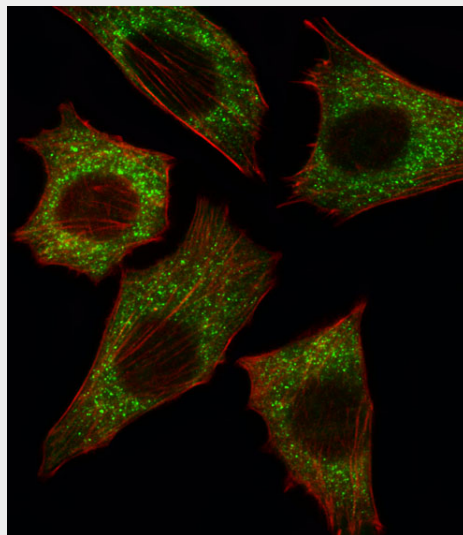
Brain and testis.

B-RAF Antibody (Center) - Protocols

Provided below are standard protocols that you may find useful for product applications.

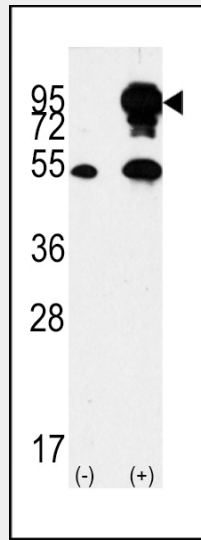
- [Western Blot](#)
- [Blocking Peptides](#)
- [Dot Blot](#)
- [Immunohistochemistry](#)
- [Immunofluorescence](#)
- [Immunoprecipitation](#)
- [Flow Cytometry](#)
- [Cell Culture](#)

B-RAF Antibody (Center) - Images

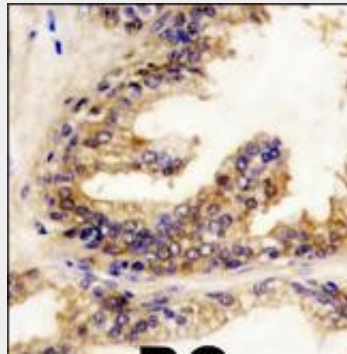


Fluorescent image of C2C12 cell stained with BRAF Antibody (Center)(Cat#AP7810c).C2C12 cells were fixed with 4% PFA (20 min), permeabilized with Triton X-100 (0.1%, 10 min), then incubated with BRAF primary antibody (1:25, 1 h at 37°C). For secondary antibody, Alexa Fluor® 488 conjugated donkey anti-rabbit antibody (green) was used (1:400, 50 min at 37°C).Cytoplasmic actin was counterstained with Alexa Fluor® 555 (red) conjugated Phalloidin (7units/ml, 1 h at

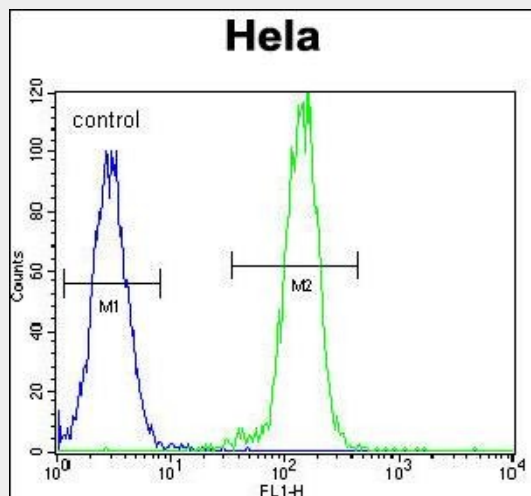
37°C). BRAF immunoreactivity is localized to Cytoplasm significantly.



Western blot analysis of BRAF Antibody (Center) polyclonal antibody (Cat.#AP7810c) (arrow). 293 cell lysates (2 ug/lane) either nontransfected (Lane 1) or transiently transfected with the BRAF gene (Lane 2) (Origene Technologies).



Formalin-fixed and paraffin-embedded human prostate carcinoma reacted with BRAF Antibody (Center) (Cat.#AP7810c), which was peroxidase-conjugated to the secondary antibody, followed by DAB staining. This data demonstrates the use of this antibody for immunohistochemistry; clinical relevance has not been evaluated.



B-RAF Antibody (Center) (Cat. #AP7810c) flow cytometric analysis of HeLa cells (right histogram) compared to a negative control cell (left histogram). FITC-conjugated goat-anti-rabbit secondary

antibodies were used for the analysis.

B-RAF Antibody (Center) - Background

BRAF, a member of the RAF subfamily of Ser/Thr protein kinases, is involved in the transduction of mitogenic signals from the cell membrane to the nucleus. It may play a role in the postsynaptic responses of hippocampal neuron. This cytoplasmic protein is expressed in brain and testis. Defects in BRAF are involved in a wide range of cancers including lung cancer and non-Hodgkin lymphoma (NHL). This protein contains 1 zinc-dependent phorbol-ester and DAG binding domain.

B-RAF Antibody (Center) - References

- Loewe, R., et al., J. Invest. Dermatol. 123(4):733-736 (2004).
Yamaguchi, T., et al., J. Biol. Chem. 279(39):40419-40430 (2004).
Frattini, M., et al., Oncogene 23(44):7436-7440 (2004).
Tsavachidou, D., et al., Cancer Res. 64(16):5556-5559 (2004).
Gear, H., et al., Invest. Ophthalmol. Vis. Sci. 45(8):2484-2488 (2004).