

**DSG2 Antibody (N-term T160)**  
**Purified Rabbit Polyclonal Antibody (Pab)**  
**Catalog # AP7795a**

**Specification**

---

**DSG2 Antibody (N-term T160) - Product Information**

Application	<b>WB, FC,E</b>
Primary Accession	<a href="#">O14126</a>
Other Accession	<a href="#">NP_001934</a>
Reactivity	<b>Human</b>
Host	<b>Rabbit</b>
Clonality	<b>Polyclonal</b>
Isotype	<b>Rabbit IgG</b>
Calculated MW	<b>122294</b>
Antigen Region	<b>145-216</b>

**DSG2 Antibody (N-term T160) - Additional Information**

**Gene ID** 1829

**Other Names**

Desmoglein-2, Cadherin family member 5, HDGC, DSG2, CDHF5

**Target/Specificity**

This DSG2 antibody is generated from rabbits immunized with a KLH conjugated synthetic peptide between 145-216 amino acids from the N-terminal region of human DSG2.

**Dilution**

WB~~1:1000

FC~~1:10~50

**Format**

Purified polyclonal antibody supplied in PBS with 0.09% (W/V) sodium azide. This antibody is prepared by Saturated Ammonium Sulfate (SAS) precipitation followed by dialysis against PBS.

**Storage**

Maintain refrigerated at 2-8°C for up to 2 weeks. For long term storage store at -20°C in small aliquots to prevent freeze-thaw cycles.

**Precautions**

DSG2 Antibody (N-term T160) is for research use only and not for use in diagnostic or therapeutic procedures.

**DSG2 Antibody (N-term T160) - Protein Information**

**Name** DSG2

**Synonyms** CDHF5

**Function** Component of intercellular desmosome junctions. Involved in the interaction of plaque proteins and intermediate filaments mediating cell-cell adhesion.

**Cellular Location**

Cell membrane; Single-pass type I membrane protein. Cell junction, desmosome

**Tissue Location**

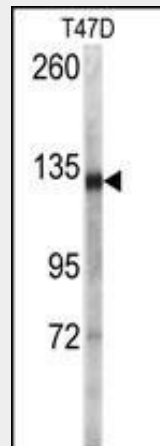
All of the tissues tested and carcinomas.

**DSG2 Antibody (N-term T160) - Protocols**

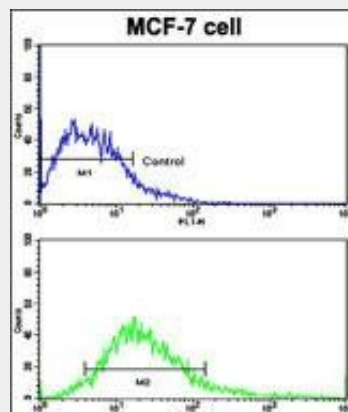
Provided below are standard protocols that you may find useful for product applications.

- [Western Blot](#)
- [Blocking Peptides](#)
- [Dot Blot](#)
- [Immunohistochemistry](#)
- [Immunofluorescence](#)
- [Immunoprecipitation](#)
- [Flow Cytometry](#)
- [Cell Culture](#)

**DSG2 Antibody (N-term T160) - Images**



Western blot analysis of anti-DSG2 Antibody (N-term T160) (AP7795a) in T47D cell line lysates (35ug/lane). DSG2 (arrow) was detected using the purified Pab.



Flow cytometric analysis of MCF-7 cells using DSG2 Antibody (N-term T160) (bottom histogram) compared to a negative control cell (top histogram). FITC-conjugated goat-anti-rabbit secondary antibodies were used for the analysis.

### **DSG2 Antibody (N-term T160) - Background**

Desmosomes are cell-cell junctions between epithelial, myocardial, and certain other cell types. This protein is a calcium-binding transmembrane glycoprotein component of desmosomes in vertebrate epithelial cells. Currently, three desmoglein subfamily members have been identified and all are members of the cadherin cell adhesion molecule superfamily. These desmoglein gene family members are located in a cluster on chromosome 18. This second family member is expressed in colon, colon carcinoma, and other simple and stratified epithelial-derived cell lines. Mutations in the DSG2 gene have been associated with arrhythmogenic right ventricular dysplasia, familial, 10.

### **DSG2 Antibody (N-term T160) - References**

Posch, M.G., Mol. Genet. Metab. 95 (1-2), 74-80 (2008)  
Yu, C.C., J. Formos. Med. Assoc. 107 (7), 548-558 (2008)