

**FLNA Antibody (Y1046)**  
**Affinity Purified Rabbit Polyclonal Antibody (Pab)**  
**Catalog # AP7770a**

**Specification**

---

**FLNA Antibody (Y1046) - Product Information**

Application	IF, WB, IHC-P, FC,E
Primary Accession	<a href="#">P21333</a>
Other Accession	<a href="#">Q8BTM8</a>
Reactivity	Human
Predicted	Mouse
Host	Rabbit
Clonality	Polyclonal
Isotype	Rabbit IgG
Calculated MW	280739
Antigen Region	1025-1054

**FLNA Antibody (Y1046) - Additional Information**

**Gene ID** 2316

**Other Names**

Filamin-A, FLN-A, Actin-binding protein 280, ABP-280, Alpha-filamin, Endothelial actin-binding protein, Filamin-1, Non-muscle filamin, FLNA, FLN, FLN1

**Target/Specificity**

This FLNA antibody is generated from rabbits immunized with a KLH conjugated synthetic peptide between 1025-1054 amino acids from human FLNA.

**Dilution**

IF~~1:10~50  
WB~~1:1000  
IHC-P~~1:10~50  
FC~~1:10~50

**Format**

Purified polyclonal antibody supplied in PBS with 0.09% (W/V) sodium azide. This antibody is purified through a protein A column, followed by peptide affinity purification.

**Storage**

Maintain refrigerated at 2-8°C for up to 2 weeks. For long term storage store at -20°C in small aliquots to prevent freeze-thaw cycles.

**Precautions**

FLNA Antibody (Y1046) is for research use only and not for use in diagnostic or therapeutic procedures.

**FLNA Antibody (Y1046) - Protein Information**

**Name** FLNA**Synonyms** FLN, FLN1

**Function** Promotes orthogonal branching of actin filaments and links actin filaments to membrane glycoproteins. Anchors various transmembrane proteins to the actin cytoskeleton and serves as a scaffold for a wide range of cytoplasmic signaling proteins. Interaction with FLNB may allow neuroblast migration from the ventricular zone into the cortical plate. Tethers cell surface-localized furin, modulates its rate of internalization and directs its intracellular trafficking (By similarity). Involved in ciliogenesis. Plays a role in cell-cell contacts and adherens junctions during the development of blood vessels, heart and brain organs. Plays a role in platelets morphology through interaction with SYK that regulates ITAM- and ITAM-like-containing receptor signaling, resulting in by platelet cytoskeleton organization maintenance (By similarity). During the axon guidance process, required for growth cone collapse induced by SEMA3A-mediated stimulation of neurons (PubMed:[25358863](#)).

**Cellular Location**

Cytoplasm, cell cortex. Cytoplasm, cytoskeleton {ECO:0000250|UniProtKB:Q8BTM8}. Perikaryon {ECO:0000250|UniProtKB:Q8BTM8}. Cell projection, growth cone {ECO:0000250|UniProtKB:Q8BTM8}. Cell projection, podosome {ECO:0000250|UniProtKB:Q8BTM8}. Note=Colocalizes with CPMR1 in the central region of DRG neuron growth cone (By similarity). Following SEMA3A stimulation of DRG neurons, colocalizes with F-actin (By similarity). Localized to the core of myotube podosomes (By similarity). {ECO:0000250|UniProtKB:Q8BTM8}

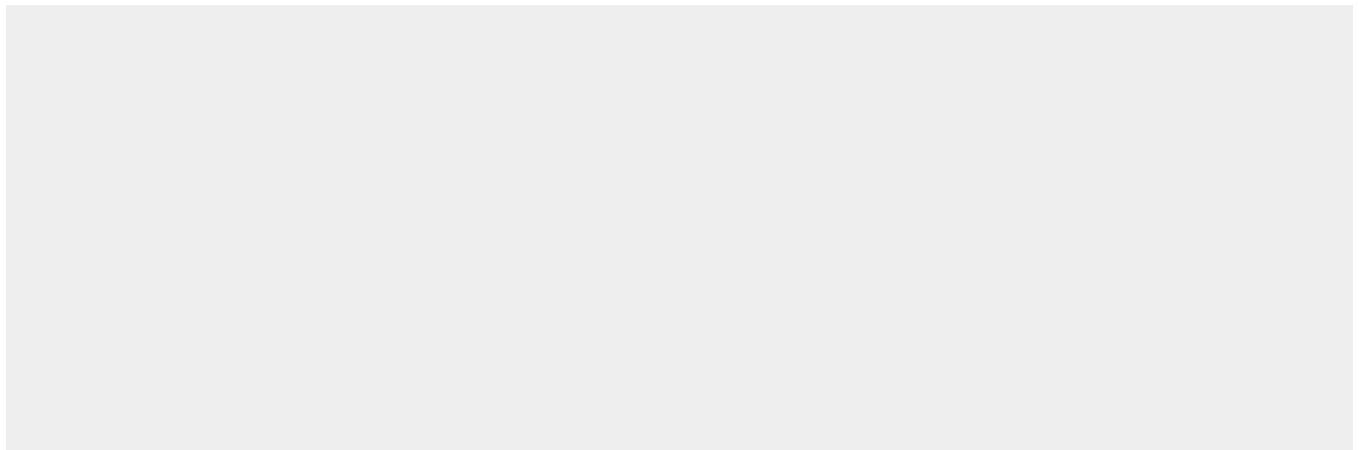
**Tissue Location**

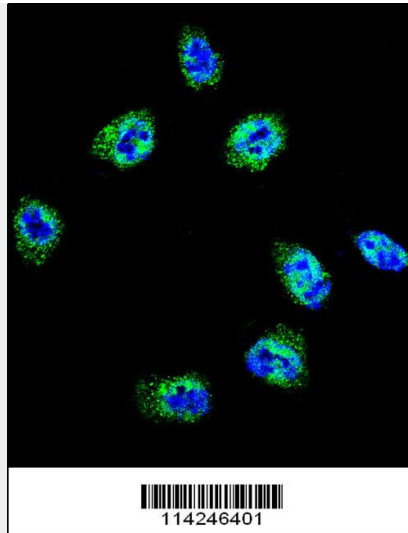
Ubiquitous.

**FLNA Antibody (Y1046) - Protocols**

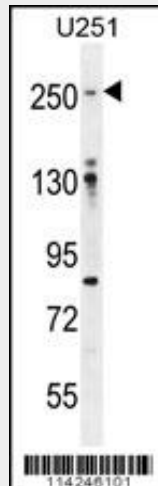
Provided below are standard protocols that you may find useful for product applications.

- [Western Blot](#)
- [Blocking Peptides](#)
- [Dot Blot](#)
- [Immunohistochemistry](#)
- [Immunofluorescence](#)
- [Immunoprecipitation](#)
- [Flow Cytometry](#)
- [Cell Culture](#)

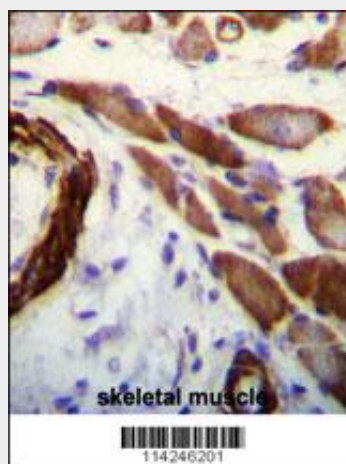
**FLNA Antibody (Y1046) - Images**



Confocal immunofluorescent analysis of FLNA Antibody (Y1046)(Cat#AP7770a) with HeLa cell followed by Alexa Fluor 488-conjugated goat anti-rabbit IgG (green).DAPI was used to stain the cell nuclear (blue).

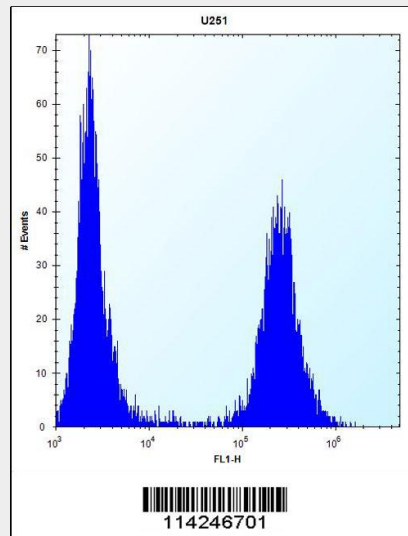


FLNA Antibody (Y1046) (Cat.#AP7770a) western blot analysis in U251 cell line lysates (35ug/lane).This demonstrates the FLNA antibody detected the FLNA protein (arrow).



FLNA Antibody (Y1046) (Cat. #AP7770a)immunohistochemistry analysis in formalin fixed and paraffin embedded human skeletal muscle followed by peroxidase conjugation of the secondary

antibody and DAB staining. This data demonstrates the use of FLNA Antibody (Y1046) for immunohistochemistry. Clinical relevance has not been evaluated.



FLNA Antibody (Y1046) (Cat. #AP7770a) flow cytometric analysis of U251 cells (right histogram) compared to a negative control cell (left histogram). FITC-conjugated goat-anti-rabbit secondary antibodies were used for the analysis.

#### **FLNA Antibody (Y1046) - Background**

Actin-binding protein 280, or filamin, is a 280-kD protein that crosslinks actin filaments into orthogonal networks in cortical cytoplasm and participates in the anchoring of membrane proteins for the actin cytoskeleton. Remodeling of the cytoskeleton is central to the modulation of cell shape and migration. Filamin A, encoded by the FLNA gene, is a widely expressed protein that regulates reorganization of the actin cytoskeleton by interacting with integrins, transmembrane receptor complexes, and second messengers.

#### **FLNA Antibody (Y1046) - References**

Ravid, D., *Exp. Cell Res.* 314 (15), 2762-2773 (2008)  
Maceyka, M., *Mol. Cell. Biol.* 28 (18), 5687-5697 (2008)

#### **FLNA Antibody (Y1046) - Citations**

- [Progression Risk Score Estimation Based on Immunostaining Data in Oral Cancer Using Unsupervised Hierarchical Clustering Analysis: A Retrospective Study in Taiwan](#)