

**GHRH Antibody (N-term)**  
**Purified Rabbit Polyclonal Antibody (Pab)**  
**Catalog # AP7758A****Specification**

---

**GHRH Antibody (N-term) - Product Information**

Application	<b>IF, WB, IHC-P,E</b>
Primary Accession	<a href="#">P01286</a>
Reactivity	<b>Human</b>
Host	<b>Rabbit</b>
Clonality	<b>Polyclonal</b>
Isotype	<b>Rabbit IgG</b>
Antigen Region	<b>8-34</b>

**GHRH Antibody (N-term) - Additional Information****Gene ID** 2691**Other Names**

Somatoliberin, Growth hormone-releasing factor, GRF, Growth hormone-releasing hormone, GHRH, Somatocrinin, Somatorelin, Sermorelin, GHRH, GHRF

**Target/Specificity**

This GHRH antibody is generated from rabbits immunized with a KLH conjugated synthetic peptide between 8-34 amino acids from the N-terminal region of human GHRH.

**Dilution**IF~~1:10~50  
WB~~1:1000  
IHC-P~~1:10~50**Format**

Purified polyclonal antibody supplied in PBS with 0.09% (W/V) sodium azide. This antibody is prepared by Saturated Ammonium Sulfate (SAS) precipitation followed by dialysis against PBS.

**Storage**

Maintain refrigerated at 2-8°C for up to 2 weeks. For long term storage store at -20°C in small aliquots to prevent freeze-thaw cycles.

**Precautions**

GHRH Antibody (N-term) is for research use only and not for use in diagnostic or therapeutic procedures.

**GHRH Antibody (N-term) - Protein Information****Name** GHRH**Synonyms** GHRF

**Function** GRF is released by the hypothalamus and acts on the adenohipophyse to stimulate the secretion of growth hormone.

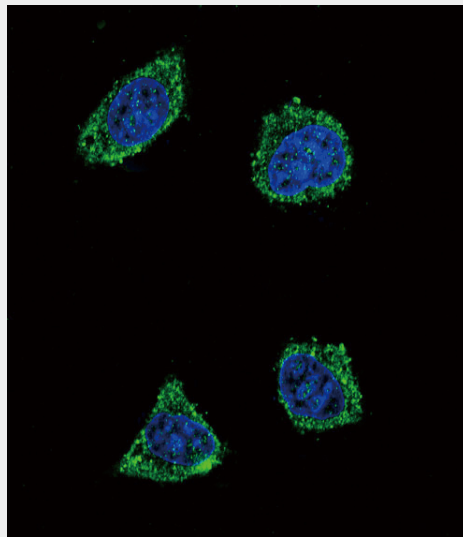
**Cellular Location**  
Secreted.

### **GHRH Antibody (N-term) - Protocols**

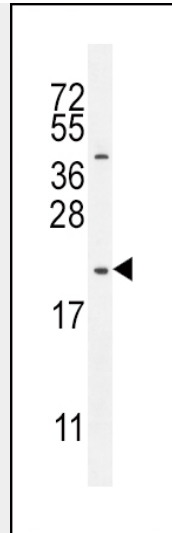
Provided below are standard protocols that you may find useful for product applications.

- [Western Blot](#)
- [Blocking Peptides](#)
- [Dot Blot](#)
- [Immunohistochemistry](#)
- [Immunofluorescence](#)
- [Immunoprecipitation](#)
- [Flow Cytometry](#)
- [Cell Culture](#)

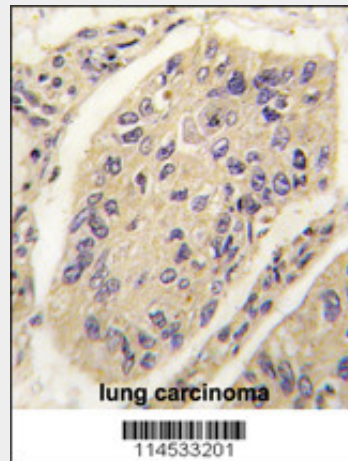
### **GHRH Antibody (N-term) - Images**



Confocal immunofluorescent analysis of GHRH Antibody (N-term) (Cat. #AP7758a) with 293 cell followed by Alexa Fluor<sup>®</sup>488-conjugated goat anti-rabbit IgG (green). DAPI was used to stain the cell nuclear (blue).



GHRH Antibody (N-term) (Cat.#AP7758a) western blot analysis in MDA-MB231 cell line lysates (35ug/lane). This demonstrates the GHRH antibody detected the GHRH protein (arrow).



Formalin-fixed and paraffin-embedded human lung carcinoma tissue reacted with GHRH antibody (N-term) (Cat.#AP7758a), which was peroxidase-conjugated to the secondary antibody, followed by DAB staining. This data demonstrates the use of this antibody for immunohistochemistry; clinical relevance has not been evaluated.

### **GHRH Antibody (N-term) - Background**

GHRH belongs to the glucagon family and is a preproprotein that is produced in the hypothalamus. The preproprotein is cleaved to form a 44 aa factor, also called somatocrinin, that acts to stimulate growth hormone release from the pituitary. Variant receptors for somatocrinin have been found in several types of tumors, and antagonists of these receptors can inhibit the growth of the tumors. Defects in this protein are a cause of dwarfism, while hypersecretion of the encoded protein is a cause of gigantism.