

GNRH1 Antibody (N-term)
Purified Rabbit Polyclonal Antibody (Pab)
Catalog # AP7754a

Specification

GNRH1 Antibody (N-term) - Product Information

Application	WB, IHC-P,E
Primary Accession	P01148
Reactivity	Human, Mouse
Host	Rabbit
Clonality	Polyclonal
Isotype	Rabbit IgG
Calculated MW	10380
Antigen Region	11-39

GNRH1 Antibody (N-term) - Additional Information

Gene ID 2796

Other Names

Progonadoliberin-1, Progonadoliberin I, Gonadoliberin-1, Gonadoliberin I, Gonadorelin, Gonadotropin-releasing hormone I, GnRH-I, Luliberin I, Luteinizing hormone-releasing hormone I, LH-RH I, GnRH-associated peptide 1, GnRH-associated peptide I, GNRH1, GNRH, GRH, LHRH

Target/Specificity

This GNRH1 antibody is generated from rabbits immunized with a KLH conjugated synthetic peptide between 11-39 amino acids from the N-terminal region of human GNRH1.

Dilution

WB~~1:1000
IHC-P~~1:10~50

Format

Purified polyclonal antibody supplied in PBS with 0.09% (W/V) sodium azide. This antibody is prepared by Saturated Ammonium Sulfate (SAS) precipitation followed by dialysis against PBS.

Storage

Maintain refrigerated at 2-8°C for up to 2 weeks. For long term storage store at -20°C in small aliquots to prevent freeze-thaw cycles.

Precautions

GNRH1 Antibody (N-term) is for research use only and not for use in diagnostic or therapeutic procedures.

GNRH1 Antibody (N-term) - Protein Information

Name GNRH1

Synonyms GNRH, GRH, LHRH

Function Stimulates the secretion of gonadotropins; it stimulates the secretion of both luteinizing and follicle-stimulating hormones.

Cellular Location

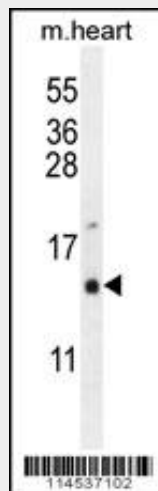
Secreted.

GNRH1 Antibody (N-term) - Protocols

Provided below are standard protocols that you may find useful for product applications.

- [Western Blot](#)
- [Blocking Peptides](#)
- [Dot Blot](#)
- [Immunohistochemistry](#)
- [Immunofluorescence](#)
- [Immunoprecipitation](#)
- [Flow Cytometry](#)
- [Cell Culture](#)

GNRH1 Antibody (N-term) - Images



GNRH1 Antibody (N-term) (Cat.#AP7754a) western blot analysis in mouse heart tissue lysates (35ug/lane). This demonstrates the GNRH1 antibody detected the GNRH1 protein (arrow).



GNRH1 Antibody (N-term) (Cat. #AP7754a) immunohistochemistry analysis in formalin fixed and paraffin embedded human placenta tissue followed by peroxidase conjugation of the secondary antibody and DAB staining. This data demonstrates the use of GNRH1 Antibody (N-term) for immunohistochemistry. Clinical relevance has not been evaluated.

GNRH1 Antibody (N-term) - Background

Stimulates the secretion of gonadotropins; it stimulates the secretion of both luteinizing and follicle-stimulating hormones.

GNRH1 Antibody (N-term) - References

Hong, I.S., J. Clin. Endocrinol. Metab. 93 (8), 3179-3185 (2008)
Baroncini, M., J. Neuroendocrinol. 19 (9), 691-702 (2007)
Nikolics, K., Nature 316 (6028), 511-517 (1985)