

**LIN28B Rabbit mAb**  
Catalog # AP77472**Specification****LIN28B Rabbit mAb - Product Information**

Application	<b>WB, IF</b>
Primary Accession	<a href="#">O6ZN17</a>
Reactivity	<b>Human</b>
Host	<b>Rabbit</b>
Clonality	<b>Monoclonal Antibody</b>
Calculated MW	<b>27084</b>

**LIN28B Rabbit mAb - Additional Information****Gene ID** 389421**Other Names**

LIN28B

**Dilution**

WB~~1/500-1/1000

IF~~1/50-1/200

**Format**

Liquid

**LIN28B Rabbit mAb - Protein Information****Name** LIN28B**Synonyms** CSDD2**Function**

Suppressor of microRNA (miRNA) biogenesis, including that of let-7 and possibly of miR107, miR-143 and miR-200c. Binds primary let-7 transcripts (pri-let-7), including pri-let-7g and pri-let-7a-1, and sequester them in the nucleolus, away from the microprocessor complex, hence preventing their processing into mature miRNA (PubMed: [22118463](http://www.uniprot.org/citations/22118463)). Does not act on pri-miR21 (PubMed: [22118463](http://www.uniprot.org/citations/22118463)). The repression of let-7 expression is required for normal development and contributes to maintain the pluripotent state of embryonic stem cells by preventing let-7-mediated differentiation. When overexpressed, recruits ZCCHC11/TUT4 uridylyltransferase to pre-let-7 transcripts, leading to their terminal uridylation and degradation (PubMed: [19703396](http://www.uniprot.org/citations/19703396)). This activity might not be relevant in vivo, as LIN28B-mediated inhibition of let-7 miRNA maturation appears to be ZCCHC11-independent (PubMed: [22118463](http://www.uniprot.org/citations/22118463)). Interaction with target pre-miRNAs occurs via an 5'- GGAG-3' motif in the pre-miRNA terminal loop. Mediates

MYC-induced let-7 repression (By similarity). When overexpressed, isoform 1 stimulates growth of the breast adenocarcinoma cell line MCF-7. Isoform 2 has no effect on cell growth.

#### Cellular Location

Nucleus. Nucleus, nucleolus. Cytoplasm Note=Predominantly nucleolar (PubMed:22118463). In Huh7 cells, predominantly cytoplasmic, with only a subset of cells exhibiting strong nuclear staining; however, the specificity of the polyclonal antibody used in these experiments has not been documented (PubMed:16971064).

#### Tissue Location

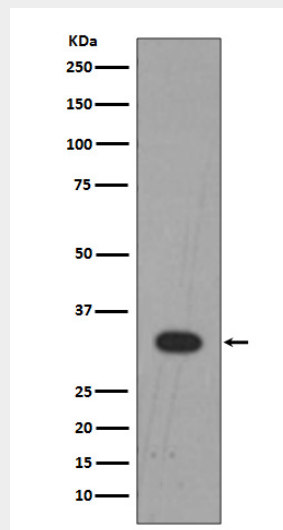
Expressed at high levels in the placenta and, at much lower, in testis and fetal liver (PubMed:16971064). Isoform 1 is only detected in placenta and in moderately and poorly differentiated hepatocellular carcinoma cells (at protein level). Isoform 2 is detected in fetal liver, non-tumor liver tissues, as well as well-differentiated tumor tissues (at protein level). Tends to be up-regulated in triple-negative (ER-,PR-,HER2-) breast tumors, as well as in liver, ovarian, and thyroid carcinomas (PubMed:22118463)

#### LIN28B Rabbit mAb - Protocols

Provided below are standard protocols that you may find useful for product applications.

- [Western Blot](#)
- [Blocking Peptides](#)
- [Dot Blot](#)
- [Immunohistochemistry](#)
- [Immunofluorescence](#)
- [Immunoprecipitation](#)
- [Flow Cytometry](#)
- [Cell Culture](#)

#### LIN28B Rabbit mAb - Images



Lin28B Antibody

