

**STK38L Antibody (C-term)**  
**Purified Rabbit Polyclonal Antibody (Pab)**  
**Catalog # AP7728b**

**Specification**

---

**STK38L Antibody (C-term) - Product Information**

Application	WB,E
Primary Accession	<a href="#">O9Y2H1</a>
Other Accession	<a href="#">O7TSE6</a>
Reactivity	Human
Predicted	Mouse
Host	Rabbit
Clonality	Polyclonal
Isotype	Rabbit IgG
Calculated MW	54003
Antigen Region	408-437

**STK38L Antibody (C-term) - Additional Information**

**Gene ID** 23012

**Other Names**

Serine/threonine-protein kinase 38-like, NDR2 protein kinase, Nuclear Dbf2-related kinase 2, STK38L {ECO:0000312|EMBL:AAH286031}

**Target/Specificity**

This STK38L antibody is generated from rabbits immunized with a KLH conjugated synthetic peptide between 408-437 amino acids from the C-terminal region of human STK38L.

**Dilution**

WB~~1:1000

**Format**

Purified polyclonal antibody supplied in PBS with 0.09% (W/V) sodium azide. This antibody is prepared by Saturated Ammonium Sulfate (SAS) precipitation followed by dialysis against PBS.

**Storage**

Maintain refrigerated at 2-8°C for up to 2 weeks. For long term storage store at -20°C in small aliquots to prevent freeze-thaw cycles.

**Precautions**

STK38L Antibody (C-term) is for research use only and not for use in diagnostic or therapeutic procedures.

**STK38L Antibody (C-term) - Protein Information**

**Name** STK38L {ECO:0000312|EMBL:AAH28603.1}

**Function** Involved in the regulation of structural processes in differentiating and mature neuronal cells.

**Cellular Location**

Cytoplasm. Cytoplasm, cytoskeleton. Membrane. Note=Associated with the actin cytoskeleton. Co-localizes with STK24/MST3 in the membrane

**Tissue Location**

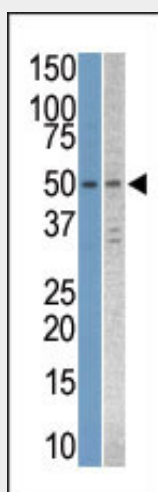
Ubiquitously expressed with highest levels observed in the thymus.

**STK38L Antibody (C-term) - Protocols**

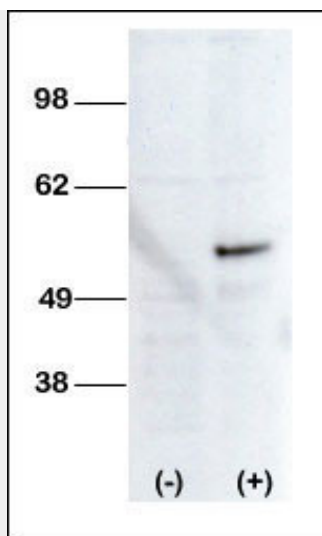
Provided below are standard protocols that you may find useful for product applications.

- [Western Blot](#)
- [Blocking Peptides](#)
- [Dot Blot](#)
- [Immunohistochemistry](#)
- [Immunofluorescence](#)
- [Immunoprecipitation](#)
- [Flow Cytometry](#)
- [Cell Culture](#)

**STK38L Antibody (C-term) - Images**



The anti-STK38L Pab (Cat. #AP7728b) is used in Western blot to detect STK38L in Jurkat and T47D cell line lysates.



Western blot analysis of anti-STK38L Pab (Cat. #AP7728b) transiently transfected HEK-293 cell line lysate (1ug/lane). STK38L pab (arrow) was detected using the purified Pab

#### **STK38L Antibody (C-term) - Background**

STK38L contains 12 protein kinase catalytic subdomains and a potential bipartite nuclear localization signal. Northern blot analysis revealed expression of a 3.9-kb transcript in all tissues tested, with the possible exception of adult brain. Highest expression was in peripheral blood leukocytes. Immunoblot and immunofluorescence microscopy demonstrated predominantly nuclear expression of a 55-kD protein.

#### **STK38L Antibody (C-term) - References**

Devroe, E., et al., J. Biol. Chem. 279(23):24444-24451 (2004).