

**KIT Antibody (Y703)**  
**Affinity Purified Rabbit Polyclonal Antibody (Pab)**  
**Catalog # AP7656g****Specification**

---

**KIT Antibody (Y703) - Product Information**

|                   |   |
|-------------------|---|
| Application       | WB, FC,E  |
| Primary Accession | <a href="#">P10721</a>                          |
| Other Accession   | <a href="#">Q2HWD6</a> , <a href="#">Q99662</a> |
| Reactivity        | Human, Mouse                                    |
| Predicted         | Pig   |
| Host              | Rabbit  |
| Clonality         | Polyclonal                                      |
| Isotype           | Rabbit IgG                                      |
| Calculated MW     | 109865  |
| Antigen Region    | 680-711   |

**KIT Antibody (Y703) - Additional Information****Gene ID** 3815**Other Names**

Mast/stem cell growth factor receptor Kit, SCFR, Piebald trait protein, PBT, Proto-oncogene c-Kit, Tyrosine-protein kinase Kit, p145 c-kit, v-kit Hardy-Zuckerman 4 feline sarcoma viral oncogene homolog, CD117, KIT, SCFR

**Target/Specificity**

This KIT antibody is generated from rabbits immunized with a KLH conjugated synthetic peptide between 680-711 amino acids from human KIT.

**Dilution**

WB~~1:1000  
FC~~1:10~50

**Format**

Purified polyclonal antibody supplied in PBS with 0.09% (W/V) sodium azide. This antibody is purified through a protein A column, followed by peptide affinity purification.

**Storage**

Maintain refrigerated at 2-8°C for up to 2 weeks. For long term storage store at -20°C in small aliquots to prevent freeze-thaw cycles.

**Precautions**

KIT Antibody (Y703) is for research use only and not for use in diagnostic or therapeutic procedures.

**KIT Antibody (Y703) - Protein Information**

## Name KIT

## Synonyms SCFR

**Function** Tyrosine-protein kinase that acts as a cell-surface receptor for the cytokine KITLG/SCF and plays an essential role in the regulation of cell survival and proliferation, hematopoiesis, stem cell maintenance, gametogenesis, mast cell development, migration and function, and in melanogenesis. In response to KITLG/SCF binding, KIT can activate several signaling pathways. Phosphorylates PIK3R1, PLCG1, SH2B2/APS and CBL. Activates the AKT1 signaling pathway by phosphorylation of PIK3R1, the regulatory subunit of phosphatidylinositol 3-kinase. Activated KIT also transmits signals via GRB2 and activation of RAS, RAF1 and the MAP kinases MAPK1/ERK2 and/or MAPK3/ERK1. Promotes activation of STAT family members STAT1, STAT3, STAT5A and STAT5B. Activation of PLCG1 leads to the production of the cellular signaling molecules diacylglycerol and inositol 1,4,5- trisphosphate. KIT signaling is modulated by protein phosphatases, and by rapid internalization and degradation of the receptor. Activated KIT promotes phosphorylation of the protein phosphatases PTPN6/SHP-1 and PTPRU, and of the transcription factors STAT1, STAT3, STAT5A and STAT5B. Promotes phosphorylation of PIK3R1, CBL, CRK (isoform Crk-II), LYN, MAPK1/ERK2 and/or MAPK3/ERK1, PLCG1, SRC and SHC1.

## Cellular Location

[Isoform 1]: Cell membrane; Single-pass type I membrane protein [Isoform 3]: Cytoplasm.

Note=Detected in the cytoplasm of spermatozoa, especially in the equatorial and subacrosomal region of the sperm head.

## Tissue Location

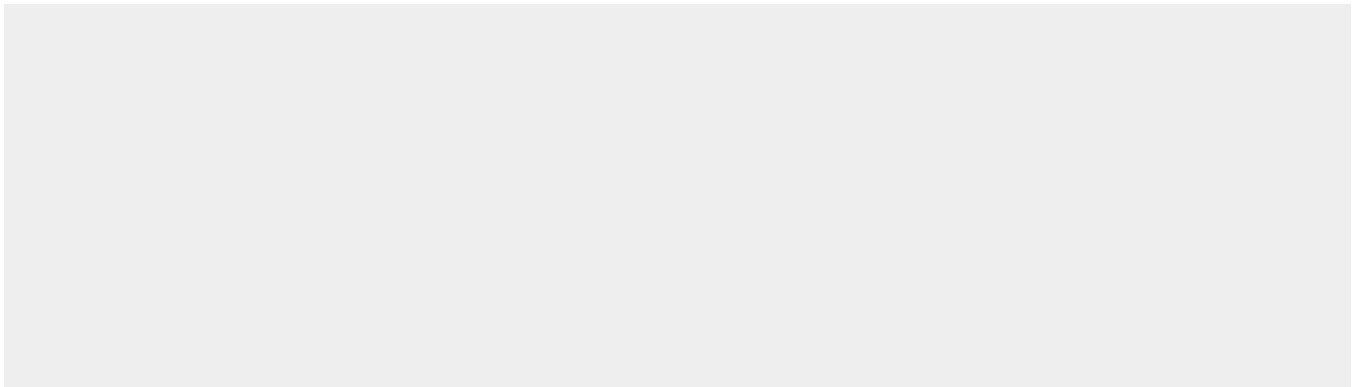
[Isoform 3]: In testis, detected in spermatogonia in the basal layer and in interstitial Leydig cells but not in Sertoli cells or spermatocytes inside the seminiferous tubules (at protein level) (PubMed:20601678). Expression is maintained in ejaculated spermatozoa (at protein level) (PubMed:20601678)

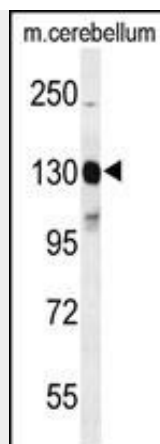
## KIT Antibody (Y703) - Protocols

Provided below are standard protocols that you may find useful for product applications.

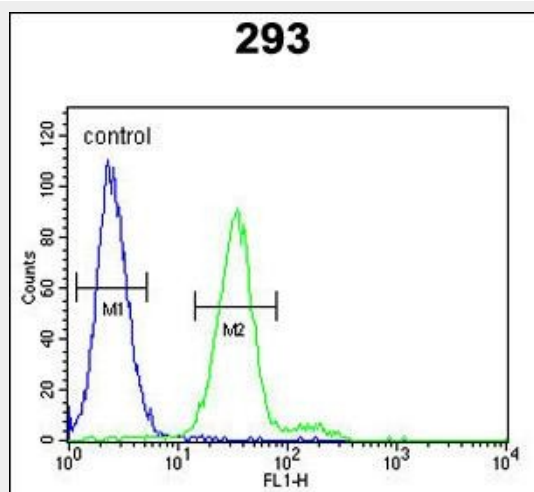
- [Western Blot](#)
- [Blocking Peptides](#)
- [Dot Blot](#)
- [Immunohistochemistry](#)
- [Immunofluorescence](#)
- [Immunoprecipitation](#)
- [Flow Cytometry](#)
- [Cell Culture](#)

## KIT Antibody (Y703) - Images





Western blot analysis of KIT Antibody (Y703) (Cat. #AP7656g) in mouse cerebellum tissue lysates (35ug/lane). KIT (arrow) was detected using the purified Pab.



KIT Antibody (Y703) (Cat. #AP7656g) flow cytometric analysis of 293 cells (right histogram) compared to a negative control cell (left histogram). FITC-conjugated goat-anti-rabbit secondary antibodies were used for the analysis.

### **KIT Antibody (Y703) - Background**

KIT is the human homolog of the proto-oncogene c-kit. C-kit was first identified as the cellular homolog of the feline sarcoma viral oncogene v-kit. KIT is a type 3 transmembrane receptor for MGF (mast cell growth factor, also known as stem cell factor).

### **KIT Antibody (Y703) - References**

- Wardelmann, E., et al., *Int. J. Cancer* 106(6):887-895 (2003).
- Lennartsson, J., et al., *Exp. Cell Res.* 288(1):110-118 (2003).
- Sakuma, Y., et al., *Cancer Sci* 94(6):486-491 (2003).
- Araki, K., et al., *Lung Cancer* 40(2):173-180 (2003).
- Voytyuk, O., et al., *J. Biol. Chem.* 278(11):9159-9166 (2003).