

**LUM Antibody (Center)**  
**Purified Rabbit Polyclonal Antibody (Pab)**  
**Catalog # AP7605c****Specification**

---

**LUM Antibody (Center) - Product Information**

Application	<b>WB, IHC-P, FC,E</b>
Primary Accession	<a href="#">P51884</a>
Other Accession	<a href="#">P51885</a> , <a href="#">Q05443</a>
Reactivity	<b>Human</b>
Predicted	<b>Bovine, Mouse</b>
Host	<b>Rabbit</b>
Clonality	<b>Polyclonal</b>
Isotype	<b>Rabbit IgG</b>
Calculated MW	<b>38429</b>
Antigen Region	<b>198-227</b>

**LUM Antibody (Center) - Additional Information****Gene ID** 4060**Other Names**

Lumican, Keratan sulfate proteoglycan lumican, KSPG lumican, LUM, LDC, SLRR2D

**Target/Specificity**

This LUM antibody is generated from rabbits immunized with a KLH conjugated synthetic peptide between 198-227 amino acids from the Central region of human LUM.

**Dilution**

WB~~1:1000  
IHC-P~~1:50~100  
FC~~1:10~50

**Format**

Purified polyclonal antibody supplied in PBS with 0.09% (W/V) sodium azide. This antibody is prepared by Saturated Ammonium Sulfate (SAS) precipitation followed by dialysis against PBS.

**Storage**

Maintain refrigerated at 2-8°C for up to 2 weeks. For long term storage store at -20°C in small aliquots to prevent freeze-thaw cycles.

**Precautions**

LUM Antibody (Center) is for research use only and not for use in diagnostic or therapeutic procedures.

**LUM Antibody (Center) - Protein Information****Name** LUM

**Synonyms** LDC, SLRR2D

**Cellular Location**

Secreted, extracellular space, extracellular matrix

**Tissue Location**

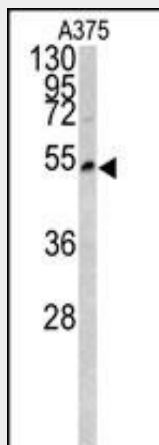
Cornea and other tissues.

**LUM Antibody (Center) - Protocols**

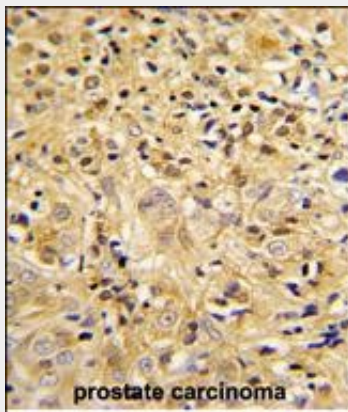
Provided below are standard protocols that you may find useful for product applications.

- [Western Blot](#)
- [Blocking Peptides](#)
- [Dot Blot](#)
- [Immunohistochemistry](#)
- [Immunofluorescence](#)
- [Immunoprecipitation](#)
- [Flow Cytometry](#)
- [Cell Culture](#)

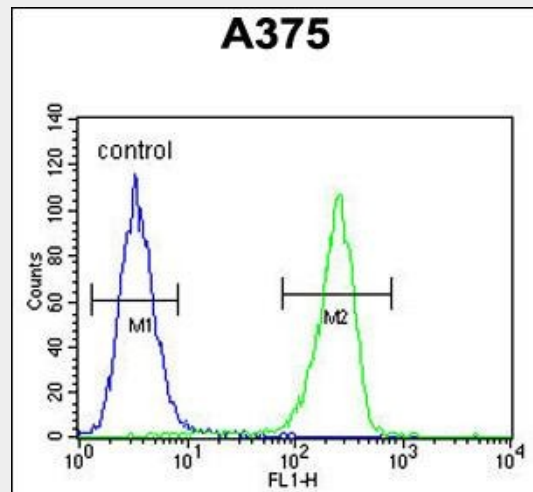
**LUM Antibody (Center) - Images**



Western blot analysis of LUM antibody (Center) (Cat.#AP7605c) in A375 cell line lysates (35ug/lane). LUM (arrow) was detected using the purified Pab.



Formalin-fixed and paraffin-embedded human prostate carcinoma reacted with LUM Antibody (Center), which was peroxidase-conjugated to the secondary antibody, followed by DAB staining. This data demonstrates the use of this antibody for immunohistochemistry; clinical relevance has not been evaluated.



LUM Antibody (Center) (Cat. #AP7605c) flow cytometric analysis of A375 cells (right histogram) compared to a negative control cell (left histogram). FITC-conjugated goat-anti-rabbit secondary antibodies were used for the analysis.

#### **LUM Antibody (Center) - Background**

LUM is a member of the small leucine-rich proteoglycan (SLRP) family that includes decorin, biglycan, fibromodulin, keratocan, epiphycan, and osteoglycin. In these bifunctional molecules, this protein moiety binds collagen fibrils and the highly charged hydrophilic glycosaminoglycans regulate interfibrillar spacings. The protein is the major keratan sulfate proteoglycan of the cornea but is also distributed in interstitial collagenous matrices throughout the body. Lumican may regulate collagen fibril organization and circumferential growth, corneal transparency, and epithelial cell migration and tissue repair.

#### **LUM Antibody (Center) - References**

- Wang,P., Li,S. Invest. Ophthalmol. Vis. Sci. 50 (4), 1546-1551 (2009)
- Matsuda,Y., Yamamoto,T. Int. J. Oncol. 33 (6), 1177-1185 (2008)
- Kelemen,L.E., Couch,F.J. Breast Cancer Res. 10 (6), R98 (2008)