

**NOMO1 Antibody (S1205)**  
**Affinity Purified Rabbit Polyclonal Antibody (Pab)**  
**Catalog # AP7596d**

**Specification**

---

**NOMO1 Antibody (S1205) - Product Information**

Application	WB,E
Primary Accession	<a href="#">Q15155</a>
Other Accession	<a href="#">P69849</a> , <a href="#">Q5JPE7</a>
Reactivity	Human
Host	Rabbit
Clonality	Polyclonal
Isotype	Rabbit IgG
Antigen Region	1187-1216

**NOMO1 Antibody (S1205) - Additional Information**

**Gene ID** 23420

**Other Names**

Nodal modulator 1, pM5 protein, NOMO1, PM5

**Target/Specificity**

This NOMO1 antibody is generated from rabbits immunized with a KLH conjugated synthetic peptide between 1187-1216 amino acids from human NOMO1.

**Dilution**

WB~~1:1000

**Format**

Purified polyclonal antibody supplied in PBS with 0.09% (W/V) sodium azide. This antibody is purified through a protein A column, followed by peptide affinity purification.

**Storage**

Maintain refrigerated at 2-8°C for up to 2 weeks. For long term storage store at -20°C in small aliquots to prevent freeze-thaw cycles.

**Precautions**

NOMO1 Antibody (S1205) is for research use only and not for use in diagnostic or therapeutic procedures.

**NOMO1 Antibody (S1205) - Protein Information**

**Name** NOMO1

**Synonyms** PM5

**Function** Component of the multi-pass translocon (MPT) complex that mediates insertion of

multi-pass membrane proteins into the lipid bilayer of membranes (PubMed:[32820719](#), PubMed:[36261522](#)). The MPT complex takes over after the SEC61 complex: following membrane insertion of the first few transmembrane segments of proteins by the SEC61 complex, the MPT complex occludes the lateral gate of the SEC61 complex to promote insertion of subsequent transmembrane regions (PubMed:[36261522](#)).

#### Cellular Location

Endoplasmic reticulum membrane; Single-pass type I membrane protein

#### Tissue Location

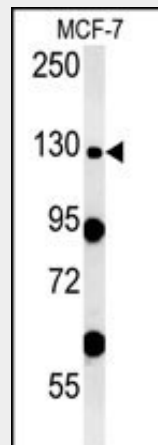
Expressed in colon tumor tissue and in adjacent normal colonic mucosa.

### NOMO1 Antibody (S1205) - Protocols

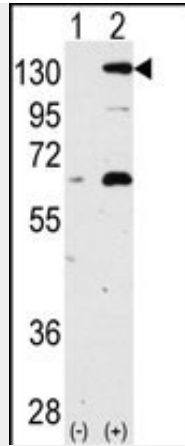
Provided below are standard protocols that you may find useful for product applications.

- [Western Blot](#)
- [Blocking Peptides](#)
- [Dot Blot](#)
- [Immunohistochemistry](#)
- [Immunofluorescence](#)
- [Immunoprecipitation](#)
- [Flow Cytometry](#)
- [Cell Culture](#)

### NOMO1 Antibody (S1205) - Images



NOMO1-S1205 (Cat.#AP7596d) western blot analysis in MCF-7 cell line lysates (35ug/lane). This demonstrates the NOMO1 antibody detected the NOMO1 protein (arrow).



Western blot analysis of NOMO1 (arrow) using rabbit polyclonal NOMO1 Antibody (S1205) (Cat.#AP7596d). 293 cell lysates (2 ug/lane) either nontransfected (Lane 1) or transiently transfected with NOMO1 gene (Lane 2) (Origene Technologies).

#### **NOMO1 Antibody (S1205) - Background**

NOMO1 was originally thought to be related to the collagenase family. The gene encoding NOMO1 is one of three highly similar genes in a region of duplication located on the p arm of chromosome 16. These three genes encode closely related proteins that may have the same function. The protein encoded by one of these genes has been identified as part of a protein complex that participates in the Nodal signaling pathway during vertebrate development.

#### **NOMO1 Antibody (S1205) - References**

Blackshaw, S., PLoS Biol. 2 (9), E247 (2004)