

**HSPA1A/HSPA1B Antibody (Y41)**  
**Affinity Purified Rabbit Polyclonal Antibody (Pab)**  
**Catalog # AP7574a**

**Specification**

---

**HSPA1A/HSPA1B Antibody (Y41) - Product Information**

Application	<b>WB, IHC-P,E</b>
Primary Accession	<a href="#">P08107</a>
Other Accession	<a href="#">P11147</a> , <a href="#">P63018</a> , <a href="#">P63017</a> , <a href="#">P11142</a> , <a href="#">Q90473</a> , <a href="#">P19378</a> , <a href="#">O73885</a> , <a href="#">P19120</a> , <a href="#">P09446</a> , <a href="#">P48741</a> , <a href="#">Q04967</a> , <a href="#">P17066</a> , <a href="#">P22202</a> , <a href="#">P09435</a> , <a href="#">P14659</a> , <a href="#">P17156</a> , <a href="#">P54652</a> , <a href="#">P34933</a> , <a href="#">Q07439</a> , <a href="#">P02827</a> , <a href="#">P08106</a> , <a href="#">P55063</a> , <a href="#">A5A8V7</a> , <a href="#">P16627</a> , <a href="#">Q4R888</a> , <a href="#">P34931</a> , <a href="#">P0CB32</a> , <a href="#">Q6S4N2</a> , <a href="#">P17879</a> , <a href="#">Q27965</a> , <a href="#">Q61696</a> , <a href="#">Q27975</a>
Reactivity	<b>Human, Mouse, Rat</b>
Predicted	<b>Bovine, Pig, Monkey, C.Elegans, Chicken, Xenopus, Yeast, Hamster, Zebrafish, Horse, Drosophila</b>
Host	<b>Rabbit</b>
Clonality	<b>Polyclonal</b>
Isotype	<b>Rabbit IgG</b>
Antigen Region	<b>19-48</b>

**HSPA1A/HSPA1B Antibody (Y41) - Additional Information**

**Other Names**

Heat shock 70 kDa protein 1A/1B, Heat shock 70 kDa protein 1/2, HSP70-1/HSP70-2, HSP701/HSP702, HSPA1A, HSPA1, HSX70

**Target/Specificity**

This HSPA1A/HSPA1B antibody is generated from rabbits immunized with a KLH conjugated synthetic peptide between 19-48 amino acids from human HSPA1A/HSPA1B.

**Dilution**

WB~~1:4000  
IHC-P~~1:100

**Format**

Purified polyclonal antibody supplied in PBS with 0.09% (W/V) sodium azide. This antibody is purified through a protein A column, followed by peptide affinity purification.

**Storage**

Maintain refrigerated at 2-8°C for up to 2 weeks. For long term storage store at -20°C in small aliquots to prevent freeze-thaw cycles.

**Precautions**

HSPA1A/HSPA1B Antibody (Y41) is for research use only and not for use in diagnostic or therapeutic procedures.

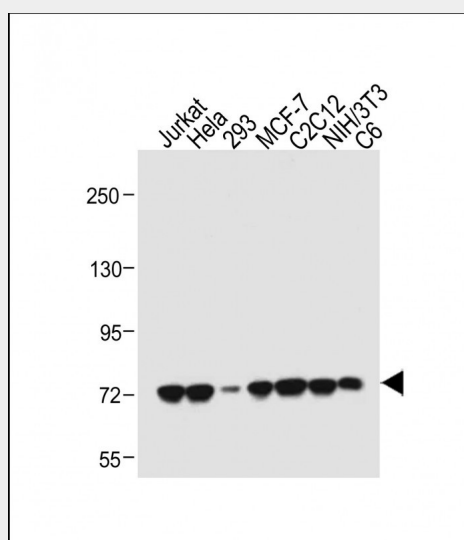
## HSPA1A/HSPA1B Antibody (Y41) - Protein Information

## HSPA1A/HSPA1B Antibody (Y41) - Protocols

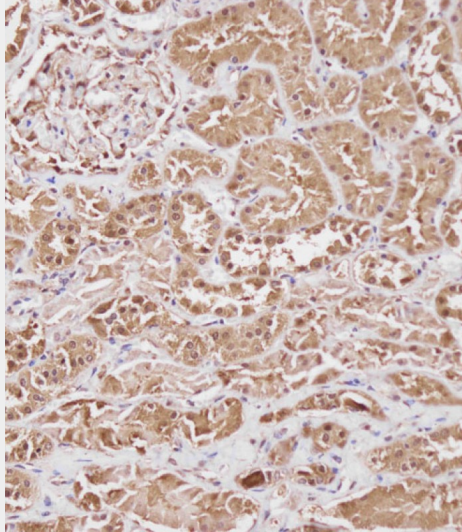
Provided below are standard protocols that you may find useful for product applications.

- [Western Blot](#)
- [Blocking Peptides](#)
- [Dot Blot](#)
- [Immunohistochemistry](#)
- [Immunofluorescence](#)
- [Immunoprecipitation](#)
- [Flow Cytometry](#)
- [Cell Culture](#)

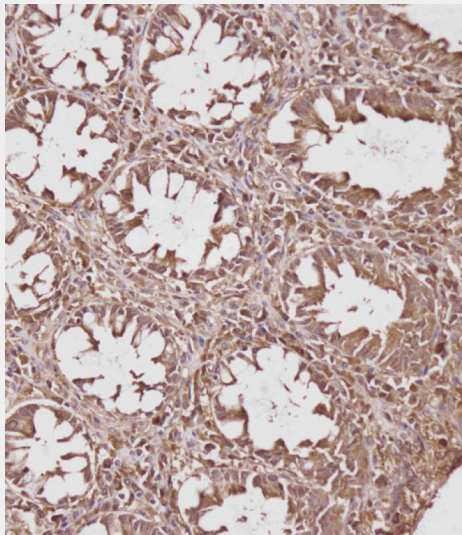
## HSPA1A/HSPA1B Antibody (Y41) - Images



All lanes : Anti-HSPA1A(Y41) Antibody at 1:4000 dilution Lane 1: Jurkat whole cell lysate Lane 2: HeLa whole cell lysate Lane 3: 293 whole cell lysate Lane 4: MCF-7 whole cell lysate Lane 5: C2C12 whole cell lysate Lane 6: NIH/3T3 whole cell lysate Lane 7: C6 whole cell lysate Lysates/proteins at 20 µg per lane. Secondary Goat Anti-Rabbit IgG, (H+L), Peroxidase conjugated at 1/10000 dilution. Predicted band size : 70 kDa Blocking/Dilution buffer: 5% NFD/MTBST.



Immunohistochemical analysis of AP7574a on paraffin-embedded Human kidney tissue. Tissue was fixed with formaldehyde at room temperature. Heat induced epitope retrieval was performed by EDTA buffer (pH9. 0). Samples were incubated with primary antibody(1:100) for 1 hour at room temperature. Undiluted CRF Anti-Polyvalent HRP Polymer antibody was used as the secondary antibody.



Immunohistochemical analysis of AP7574a on paraffin-embedded Human colon tissue. Tissue was fixed with formaldehyde at room temperature. Heat induced epitope retrieval was performed by EDTA buffer (pH9. 0). Samples were incubated with primary antibody(1:100) for 1 hour at room temperature. Undiluted CRF Anti-Polyvalent HRP Polymer antibody was used as the secondary antibody.

#### **HSPA1A/HSPA1B Antibody (Y41) - Background**

HSPA1A is a member of the heat shock protein 70 family. In conjunction with other heat shock proteins, this protein stabilizes existing proteins against aggregation and mediates the folding of newly translated proteins in the cytosol and in organelles. It is also involved in the ubiquitin-proteasome pathway through interaction with the AU-rich element RNA-binding protein 1.

#### **HSPA1A/HSPA1B Antibody (Y41) - References**

Mueller, T., et al., Transplantation 78(2):292-295 (2004).

Fekete, A., et al., *Pediatr. Res.* 54(4):452-455 (2003).

Broquet, A.H., et al., *J. Biol. Chem.* 278(24):21601-21606 (2003).

Bruce, C.R., et al., *Diabetes* 52(9):2338-2345 (2003).

Anwar, A., et al., *J. Biol. Chem.* 277(16):14060-14067 (2002).

**HSPA1A/HSPA1B Antibody (Y41) - Citations**

- [Characterization of cadmium chloride-induced BiP accumulation in \*Xenopus laevis\* A6 kidney epithelial cells.](#)