

**BBS4 Antibody (Center)**  
**Purified Rabbit Polyclonal Antibody (Pab)**  
**Catalog # AP7562c**

**Specification**

---

**BBS4 Antibody (Center) - Product Information**

Application	<b>WB,E</b>
Primary Accession	<a href="#">O96RK4</a>
Reactivity	<b>Human</b>
Host	<b>Rabbit</b>
Clonality	<b>Polyclonal</b>
Isotype	<b>Rabbit IgG</b>
Calculated MW	<b>58282</b>
Antigen Region	<b>337-369</b>

**BBS4 Antibody (Center) - Additional Information**

**Gene ID** 585

**Other Names**

Bardet-Biedl syndrome 4 protein, BBS4

**Target/Specificity**

This BBS4 antibody is generated from rabbits immunized with a KLH conjugated synthetic peptide between 337-369 amino acids from the Central region of human BBS4.

**Dilution**

WB~~1:1000

**Format**

Purified polyclonal antibody supplied in PBS with 0.09% (W/V) sodium azide. This antibody is prepared by Saturated Ammonium Sulfate (SAS) precipitation followed by dialysis against PBS.

**Storage**

Maintain refrigerated at 2-8°C for up to 2 weeks. For long term storage store at -20°C in small aliquots to prevent freeze-thaw cycles.

**Precautions**

BBS4 Antibody (Center) is for research use only and not for use in diagnostic or therapeutic procedures.

**BBS4 Antibody (Center) - Protein Information**

**Name** BBS4

**Function** The BBSome complex is thought to function as a coat complex required for sorting of specific membrane proteins to the primary cilia. The BBSome complex is required for ciliogenesis but is dispensable for centriolar satellite function. This ciliogenic function is mediated in part by

the Rab8 GDP/GTP exchange factor, which localizes to the basal body and contacts the BBSome. Rab8(GTP) enters the primary cilium and promotes extension of the ciliary membrane. Firstly the BBSome associates with the ciliary membrane and binds to RAB3IP/Rabin8, the guanosyl exchange factor (GEF) for Rab8 and then the Rab8-GTP localizes to the cilium and promotes docking and fusion of carrier vesicles to the base of the ciliary membrane. The BBSome complex, together with the LTZL1, controls SMO ciliary trafficking and contributes to the sonic hedgehog (SHH) pathway regulation. Required for proper BBSome complex assembly and its ciliary localization. Required for microtubule anchoring at the centrosome but not for microtubule nucleation. May be required for the dynein-mediated transport of pericentriolar proteins to the centrosome.

#### Cellular Location

Cytoplasm, cytoskeleton, microtubule organizing center, centrosome. Cell projection, cilium membrane. Cytoplasm. Cytoplasm, cytoskeleton, microtubule organizing center, centrosome, centriolar satellite. Cell projection, cilium, flagellum {ECO:0000250|UniProtKB:Q8C1Z7}. Cell projection, cilium {ECO:0000250|UniProtKB:Q8C1Z7}. Note=Localizes to the pericentriolar material. Centrosomal localization requires dynein (By similarity) Localizes to the connecting cilium of photoreceptor cells (By similarity). {ECO:0000250|UniProtKB:Q8C1Z7}

#### Tissue Location

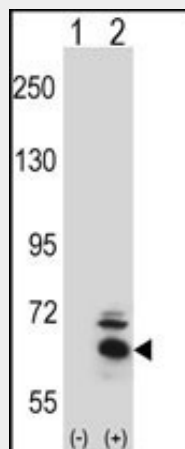
Ubiquitously expressed. The highest level of expression is found in the kidney

### BBS4 Antibody (Center) - Protocols

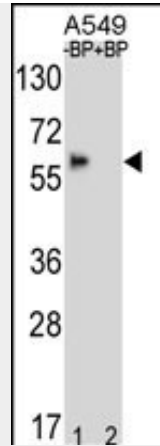
Provided below are standard protocols that you may find useful for product applications.

- [Western Blot](#)
- [Blocking Peptides](#)
- [Dot Blot](#)
- [Immunohistochemistry](#)
- [Immunofluorescence](#)
- [Immunoprecipitation](#)
- [Flow Cytometry](#)
- [Cell Culture](#)

### BBS4 Antibody (Center) - Images



Western blot analysis of BBS4 (arrow) using rabbit polyclonal BBS4 Antibody (Center) (Cat.#AP7562c). 293 cell lysates (2 ug/lane) either nontransfected (Lane 1) or transiently transfected (Lane 2) with the BBS4 gene.



Western blot analysis of BBS4 Antibody (Center) Pab (Cat.#AP7562c) pre-incubated without (lane 1) and with (lane 2) blocking peptide in A549 cell line lysate. BBS4 Antibody (Center) (arrow) was detected using the purified Pab.

### **BBS4 Antibody (Center) - Background**

BBS4 contains tetratricopeptide repeats (TPR), similar to O-linked N-acetylglucosamine transferase. Mutations in the gene encoding this protein have been observed in patients with Bardet-Biedl syndrome type 4. BBS4 may play a role in pigmentary retinopathy, obesity, polydactyly, renal malformation and mental retardation.

### **BBS4 Antibody (Center) - References**

- Nachury, M.V., Cell 129 (6), 1201-1213 (2007)
- Ye, X., DNA Seq. 15 (3), 213-218 (2004)
- Kim, J.C., Nat. Genet. 36 (5), 462-470 (2004)