

**GIPR Antibody (Center)**  
**Affinity Purified Rabbit Polyclonal Antibody (Pab)**  
**Catalog # AP7495c**

**Specification**

---

**GIPR Antibody (Center) - Product Information**

Application	WB,E
Primary Accession	<a href="#">P48546</a>
Reactivity	Human
Host	Rabbit
Clonality	Polyclonal
Isotype	Rabbit IgG
Calculated MW	53157
Antigen Region	104-136

**GIPR Antibody (Center) - Additional Information**

**Gene ID** 2696

**Other Names**

Gastric inhibitory polypeptide receptor, GIP-R, Glucose-dependent insulinotropic polypeptide receptor, GIPR

**Target/Specificity**

This GIPR antibody is generated from rabbits immunized with a KLH conjugated synthetic peptide between 104-136 amino acids from the Central region of human GIPR.

**Dilution**

WB~~1:1000

**Format**

Purified polyclonal antibody supplied in PBS with 0.09% (W/V) sodium azide. This antibody is purified through a protein A column, followed by peptide affinity purification.

**Storage**

Maintain refrigerated at 2-8°C for up to 2 weeks. For long term storage store at -20°C in small aliquots to prevent freeze-thaw cycles.

**Precautions**

GIPR Antibody (Center) is for research use only and not for use in diagnostic or therapeutic procedures.

**GIPR Antibody (Center) - Protein Information**

**Name** GIPR

**Function** This is a receptor for GIP. The activity of this receptor is mediated by G proteins which activate adenylyl cyclase.

### Cellular Location

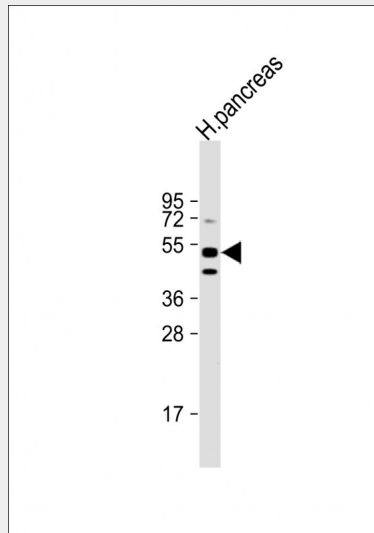
Cell membrane; Multi-pass membrane protein.

### GIPR Antibody (Center) - Protocols

Provided below are standard protocols that you may find useful for product applications.

- [Western Blot](#)
- [Blocking Peptides](#)
- [Dot Blot](#)
- [Immunohistochemistry](#)
- [Immunofluorescence](#)
- [Immunoprecipitation](#)
- [Flow Cytometry](#)
- [Cell Culture](#)

### GIPR Antibody (Center) - Images



Anti-GIPR Antibody (Center) at 1:1000 dilution + human pancreas lysate Lysates/proteins at 20 µg per lane. Secondary Goat Anti-Rabbit IgG, (H+L), Peroxidase conjugated at 1/10000 dilution. Predicted band size : 53 kDa Blocking/Dilution buffer: 5% NFD/MTBST.

### GIPR Antibody (Center) - Background

GIPR also called glucose-dependent insulinotropic polypeptide, is a 42-amino acid polypeptide synthesized by K cells of the duodenum and small intestine. This protein was originally identified as an activity in gut extracts that inhibited gastric acid secretion and gastrin release, but subsequently was demonstrated to stimulate insulin release potently in the presence of elevated glucose. The insulinotropic effect on pancreatic islet beta-cells was then recognized to be the principal physiologic action of GIP. Together with glucagon-like peptide-1, GIP is largely responsible for the secretion of insulin after eating. The protein is involved in several other facets of the anabolic response.

### GIPR Antibody (Center) - References

Herbach,N. Am. J. Physiol. Renal Physiol. 296 (4), F819-F829 (2009)  
Rudovich,N., Kaiser,S. Regul. Pept. 142 (3), 138-145 (2007)

Nitz,I., Fisher,E. Mol Nutr Food Res 51 (8), 1046-1052 (2007)