

**MSH6 Rabbit mAb**  
Catalog # AP74897**Specification**

---

**MSH6 Rabbit mAb - Product Information**

Application	WB, IHC, IF
Primary Accession	<a href="#">P52701</a>
Reactivity	Human, Mouse, Rat
Host	Rabbit
Clonality	Monoclonal Antibody
Calculated MW	152786

**MSH6 Rabbit mAb - Additional Information**

Gene ID 2956

**Other Names**

MSH6

**Dilution**

WB~~1/500-1/1000

IHC~~1/50-1/100

IF~~1/50-1/200

**Format**

Liquid

**MSH6 Rabbit mAb - Protein Information**Name MSH6 ([HGNC:7329](#))

Synonyms GTBP

**Function**

Component of the post-replicative DNA mismatch repair system (MMR). Heterodimerizes with MSH2 to form MutS alpha, which binds to DNA mismatches thereby initiating DNA repair. When bound, MutS alpha bends the DNA helix and shields approximately 20 base pairs, and recognizes single base mismatches and dinucleotide insertion-deletion loops (IDL) in the DNA. After mismatch binding, forms a ternary complex with the MutL alpha heterodimer, which is thought to be responsible for directing the downstream MMR events, including strand discrimination, excision, and resynthesis. ATP binding and hydrolysis play a pivotal role in mismatch repair functions. The ATPase activity associated with MutS alpha regulates binding similar to a molecular switch: mismatched DNA provokes ADP-->ATP exchange, resulting in a discernible conformational transition that converts MutS alpha into a sliding clamp capable of hydrolysis-independent diffusion along the DNA backbone. This transition is crucial for mismatch repair. MutS alpha may also play a role in DNA homologous recombination repair. Recruited on chromatin in G1 and early S phase via its PWWP domain that specifically binds trimethylated 'Lys-36' of histone H3 (H3K36me3): early recruitment to chromatin to be replicated allowing a quick identification of

mismatch repair to initiate the DNA mismatch repair reaction.

#### Cellular Location

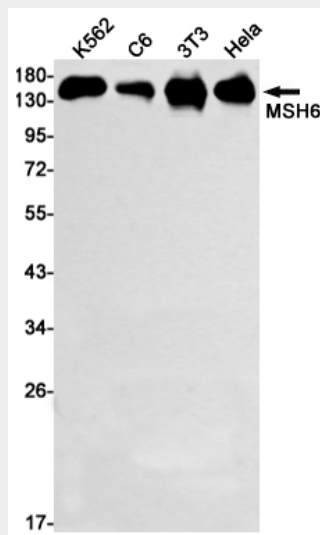
Nucleus. Chromosome. Note=Associates with H3K36me3 via its PWWP domain

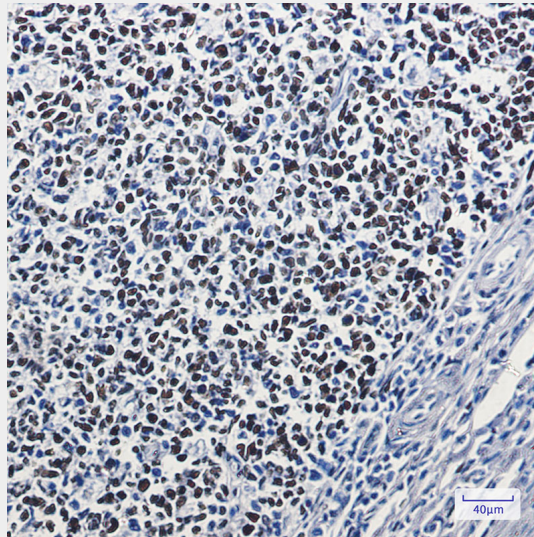
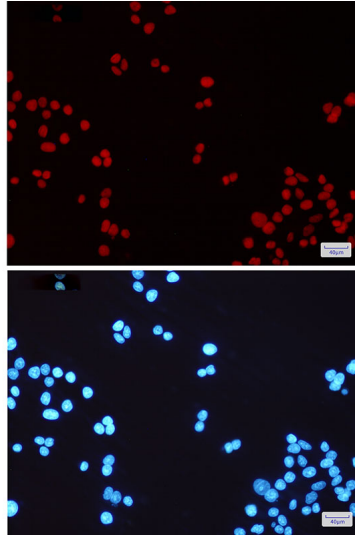
#### MSH6 Rabbit mAb - Protocols

Provided below are standard protocols that you may find useful for product applications.

- [Western Blot](#)
- [Blocking Peptides](#)
- [Dot Blot](#)
- [Immunohistochemistry](#)
- [Immunofluorescence](#)
- [Immunoprecipitation](#)
- [Flow Cytometry](#)
- [Cell Culture](#)

#### MSH6 Rabbit mAb - Images





#### **MSH6 Rabbit mAb - Citations**

- [Detection of microsatellite instability with Idylla MSI assay in colorectal and endometrial cancer](#)