

**SERPINA4 Antibody (C-term)**  
**Purified Rabbit Polyclonal Antibody (Pab)**  
**Catalog # AP7455b**

**Specification**

---

**SERPINA4 Antibody (C-term) - Product Information**

Application	WB, IHC-P, FC,E
Primary Accession	<a href="#">P29622</a>
Reactivity	Human
Host	Rabbit
Clonality	Polyclonal
Isotype	Rabbit IgG
Calculated MW	48542
Antigen Region	291-320

**SERPINA4 Antibody (C-term) - Additional Information**

**Gene ID** 5267

**Other Names**

Kallistatin, Kallikrein inhibitor, Peptidase inhibitor 4, PI-4, Serpin A4, SERPINA4, KST, PI4

**Target/Specificity**

This SERPINA4 antibody is generated from rabbits immunized with a KLH conjugated synthetic peptide between 291-320 amino acids from the C-terminal region of human SERPINA4.

**Dilution**

WB~~1:1000  
IHC-P~~1:50~100  
FC~~1:10~50

**Format**

Purified polyclonal antibody supplied in PBS with 0.09% (W/V) sodium azide. This antibody is prepared by Saturated Ammonium Sulfate (SAS) precipitation followed by dialysis against PBS.

**Storage**

Maintain refrigerated at 2-8°C for up to 2 weeks. For long term storage store at -20°C in small aliquots to prevent freeze-thaw cycles.

**Precautions**

SERPINA4 Antibody (C-term) is for research use only and not for use in diagnostic or therapeutic procedures.

**SERPINA4 Antibody (C-term) - Protein Information**

**Name** SERPINA4

**Synonyms** KST, PI4

**Function** Inhibits human amidolytic and kininogenase activities of tissue kallikrein. Inhibition is achieved by formation of an equimolar, heat- and SDS-stable complex between the inhibitor and the enzyme, and generation of a small C-terminal fragment of the inhibitor due to cleavage at the reactive site by tissue kallikrein.

**Cellular Location**

Secreted.

**Tissue Location**

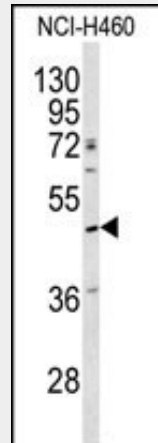
Expressed by the liver and secreted in plasma.

**SERPINA4 Antibody (C-term) - Protocols**

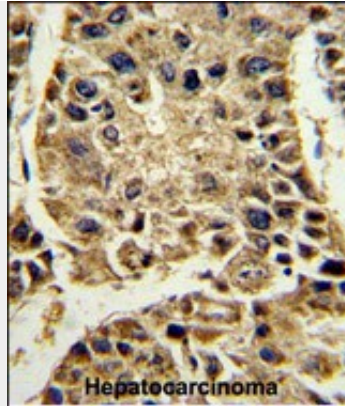
Provided below are standard protocols that you may find useful for product applications.

- [Western Blot](#)
- [Blocking Peptides](#)
- [Dot Blot](#)
- [Immunohistochemistry](#)
- [Immunofluorescence](#)
- [Immunoprecipitation](#)
- [Flow Cytometry](#)
- [Cell Culture](#)

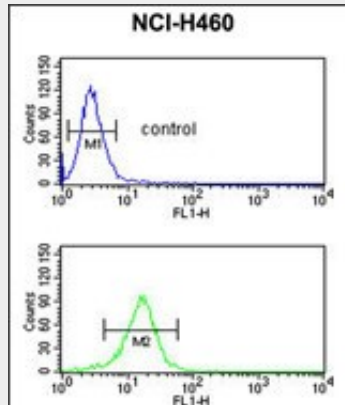
**SERPINA4 Antibody (C-term) - Images**



Western blot analysis of SERPINA4 antibody (C-term) (Cat.#AP7455b) in NCI-H460 cell line lysates (35ug/lane). SERPINA4 (arrow) was detected using the purified Pab.



Formalin-fixed and paraffin-embedded human hepatocarcinoma reacted with SERPINA4 Antibody (C-term), which was peroxidase-conjugated to the secondary antibody, followed by DAB staining. This data demonstrates the use of this antibody for immunohistochemistry; clinical relevance has not been evaluated.



SERPINA4 Antibody (C-term) (Cat. #AP7455b) flow cytometric analysis of NCI-H460 cells (bottom histogram) compared to a negative control cell (top histogram). FITC-conjugated goat-anti-rabbit secondary antibodies were used for the analysis.

### **SERPINA4 Antibody (C-term) - Background**

SERPINA4 inhibits human amidolytic and kininogenase activities of tissue kallikrein. The inhibition is achieved by formation of an equimolar, heat- and SDS-stable complex between the inhibitor and the enzyme, and generation of a small C-terminal fragment of the inhibitor due to cleavage at the reactive site by tissue kallikrein.

### **SERPINA4 Antibody (C-term) - References**

- Chai K.X., Chen L.-M.J. Biol. Chem. 268:24498-24505(1993)
- Chai K.X., Ward D.C. Genomics 23:370-378(1994)
- Zhou G.X., Chao L.J. Biol. Chem. 267:25873-25880(1992)