

**HNF4G Antibody (Center)**  
**Purified Rabbit Polyclonal Antibody (Pab)**  
**Catalog # AP7452c**

**Specification**

---

**HNF4G Antibody (Center) - Product Information**

Application	WB,E
Primary Accession	<a href="#">Q14541</a>
Other Accession	<a href="#">Q9WUU6</a> , <a href="#">Q91766</a> , <a href="#">P22449</a> , <a href="#">P49698</a> , <a href="#">P41235</a>
Reactivity	Human, Mouse
Predicted	Rat, Xenopus
Host	Rabbit
Clonality	Polyclonal
Isotype	Rabbit IgG
Calculated MW	45877
Antigen Region	258-287

**HNF4G Antibody (Center) - Additional Information**

**Gene ID** 3174

**Other Names**

Hepatocyte nuclear factor 4-gamma, HNF-4-gamma, Nuclear receptor subfamily 2 group A member 2, HNF4G, NR2A2

**Target/Specificity**

This HNF4G antibody is generated from rabbits immunized with a KLH conjugated synthetic peptide between 258-287 amino acids from the Central region of human HNF4G.

**Dilution**

WB~~1:1000

**Format**

Purified polyclonal antibody supplied in PBS with 0.09% (W/V) sodium azide. This antibody is prepared by Saturated Ammonium Sulfate (SAS) precipitation followed by dialysis against PBS.

**Storage**

Maintain refrigerated at 2-8°C for up to 2 weeks. For long term storage store at -20°C in small aliquots to prevent freeze-thaw cycles.

**Precautions**

HNF4G Antibody (Center) is for research use only and not for use in diagnostic or therapeutic procedures.

**HNF4G Antibody (Center) - Protein Information**

**Name** HNF4G

### Synonyms NR2A2

**Function** Transcription factor. Has a lower transcription activation potential than HNF4-alpha.

### Cellular Location

Nucleus {ECO:0000255|PROSITE-ProRule:PRU00407}.

### Tissue Location

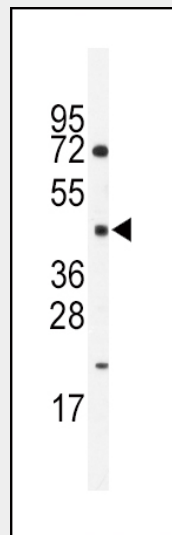
Expressed in pancreas, kidney, small intestine and testis. Weakly expressed in colon. Not expressed in liver, skeletal muscle, lung, placenta, brain, heart, peripheral blood, ovary, prostate, thymus and spleen

### HNF4G Antibody (Center) - Protocols

Provided below are standard protocols that you may find useful for product applications.

- [Western Blot](#)
- [Blocking Peptides](#)
- [Dot Blot](#)
- [Immunohistochemistry](#)
- [Immunofluorescence](#)
- [Immunoprecipitation](#)
- [Flow Cytometry](#)
- [Cell Culture](#)

### HNF4G Antibody (Center) - Images



Western blot analysis of anti-HNF4G Antibody (Center) (Cat.#AP7542c) in mouse spleen lysates (35ug/lane). HNF4G (arrow) was detected using the purified Pab .

### HNF4G Antibody (Center) - Background

HNF4G is a transcription factor. It has a lower transcription activation potential than HNF4-alpha.

### HNF4G Antibody (Center) - References

Plengvidhya N., Antonellis A. Diabetes 48:2099-2102(1999)

Drewes T., Senkel S. Mol. Cell. Biol. 16:925-931(1996)  
Wisely G.B., Miller A.B. Structure 10:1225-1234(2002)