

Flotillin-1 Polyclonal Antibody
Catalog # AP74473**Specification**

Flotillin-1 Polyclonal Antibody - Product Information

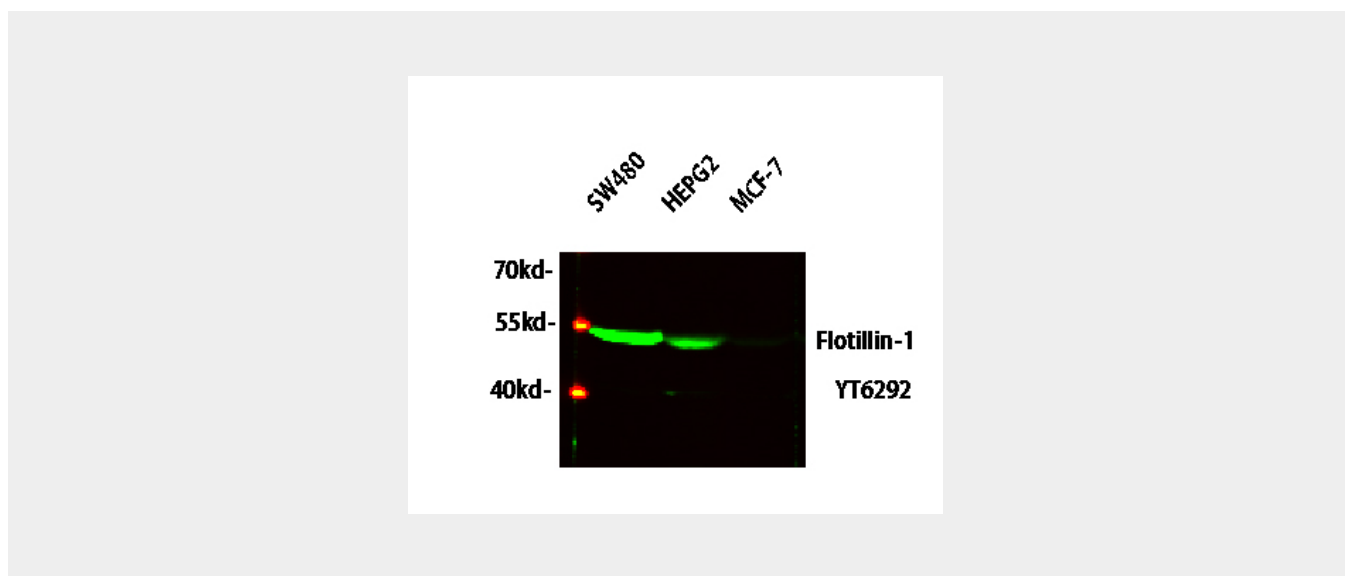
Application	WB
Primary Accession	O75955
Reactivity	Human, Mouse, Rat
Host	Rabbit
Clonality	Polyclonal

Flotillin-1 Polyclonal Antibody - Additional Information**Gene ID** 10211**Other Names**
Flotillin-1**Dilution**
WB~~WB 1:500-2000, ELISA(peptide)1:5000-20000**Format**
Liquid in PBS containing 50% glycerol, 0.5% BSA and 0.09% (W/V) sodium azide.**Storage Conditions**
-20°C**Flotillin-1 Polyclonal Antibody - Protein Information****Name** FLOT1**Function**
May act as a scaffolding protein within caveolar membranes, functionally participating in formation of caveolae or caveolae-like vesicles.**Cellular Location**
Cell membrane; Peripheral membrane protein. Endosome Membrane, caveola {ECO:0000250|UniProtKB:O08917}; Peripheral membrane protein {ECO:0000250|UniProtKB:O08917}. Melanosome. Membrane raft. Note=Identified by mass spectrometry in melanosome fractions from stage I to stage IV (PubMed:17081065) Membrane-associated protein of caveola (By similarity) {ECO:0000250|UniProtKB:O08917, ECO:0000269|PubMed:17081065}**Flotillin-1 Polyclonal Antibody - Protocols**

Provided below are standard protocols that you may find useful for product applications.

- [Western Blot](#)
- [Blocking Peptides](#)
- [Dot Blot](#)
- [Immunohistochemistry](#)
- [Immunofluorescence](#)
- [Immunoprecipitation](#)
- [Flow Cytometry](#)
- [Cell Culture](#)

Flotillin-1 Polyclonal Antibody - Images



Flotillin-1 Polyclonal Antibody - Background

May act as a scaffolding protein within caveolar membranes, functionally participating in formation of caveolae or caveolae-like vesicles.