

SPRY4 Antibody (C-term)
Affinity Purified Rabbit Polyclonal Antibody (Pab)
Catalog # AP7446B

Specification

SPRY4 Antibody (C-term) - Product Information

Application	WB,E
Primary Accession	O9C004
Reactivity	Human
Host	Rabbit
Clonality	Polyclonal
Isotype	Rabbit IgG
Calculated MW	32541
Antigen Region	270-301

SPRY4 Antibody (C-term) - Additional Information

Gene ID 81848

Other Names

Protein sprouty homolog 4, Spry-4, SPRY4

Target/Specificity

This SPRY4 antibody is generated from rabbits immunized with a KLH conjugated synthetic peptide between 270-301 amino acids from the C-terminal region of human SPRY4.

Dilution

WB~~1:1000

Format

Purified polyclonal antibody supplied in PBS with 0.09% (W/V) sodium azide. This antibody is purified through a protein A column, followed by peptide affinity purification.

Storage

Maintain refrigerated at 2-8°C for up to 2 weeks. For long term storage store at -20°C in small aliquots to prevent freeze-thaw cycles.

Precautions

SPRY4 Antibody (C-term) is for research use only and not for use in diagnostic or therapeutic procedures.

SPRY4 Antibody (C-term) - Protein Information

Name SPRY4

Function Suppresses the insulin receptor and EGFR-transduced MAPK signaling pathway, but does not inhibit MAPK activation by a constitutively active mutant Ras (PubMed:[12027893](#)). Probably impairs the formation of GTP-Ras (PubMed:[12027893](#)). Inhibits Ras-independent, but not

Ras-dependent, activation of RAF1 (PubMed:[12717443](#)). Represses integrin-mediated cell spreading via inhibition of TESK1-mediated phosphorylation of cofilin (PubMed:[15584898](#)).

Cellular Location

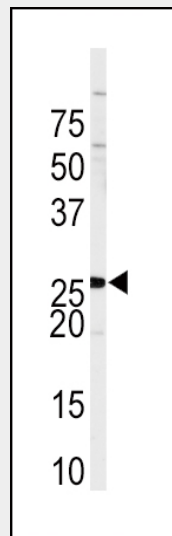
Cytoplasm. Cell projection, ruffle membrane; Peripheral membrane protein; Cytoplasmic side. Note=Found in the cytoplasm in unstimulated cells but is translocated to the membrane ruffles in cells stimulated with EGF (epidermal growth factor) (By similarity). Colocalizes with TESK1 in vesicular spots in the cytoplasm (PubMed:15584898) {ECO:0000250|UniProtKB:Q9WTP2, ECO:0000269|PubMed:15584898}

SPRY4 Antibody (C-term) - Protocols

Provided below are standard protocols that you may find useful for product applications.

- [Western Blot](#)
- [Blocking Peptides](#)
- [Dot Blot](#)
- [Immunohistochemistry](#)
- [Immunofluorescence](#)
- [Immunoprecipitation](#)
- [Flow Cytometry](#)
- [Cell Culture](#)

SPRY4 Antibody (C-term) - Images



Western blot analysis of anti-SPRY4 Antibody (C-term) (Cat.#AP7446b) in Sk-Br-3 cell line lysates (35ug/lane). SPRY4 (arrow) was detected using the purified Pab.

SPRY4 Antibody (C-term) - Background

SPRY4 is an inhibitor of the receptor-transduced mitogen-activated protein kinase (MAPK) signaling pathway. The protein is positioned upstream of RAS activation and impairs the formation of active GTP-RAS.

SPRY4 Antibody (C-term) - References

Tsai CF, et al. (2008) J Proteome Res

Guo A, et al. (2008) Proc Natl Acad Sci U S A 105, 692-7

Rikova K, et al. (2007) Cell 131, 1190-203

Wolf-Yadlin A, Hautaniemi S, Lauffenburger DA, White FM (2007) Proc Natl Acad Sci U S A 104, 5860-5

Tsumura Y, et al. (2005) Biochem J 387, 627-37