

CD105 Polyclonal Antibody
Catalog # AP74468**Specification****CD105 Polyclonal Antibody - Product Information**

Application	WB
Primary Accession	P17813
Reactivity	Human
Host	Rabbit
Clonality	Polyclonal

CD105 Polyclonal Antibody - Additional Information**Gene ID** 2022**Other Names**

Endoglin (CD antigen CD105)

Dilution

WB~~WB 1:500-2000, ELISA(peptide)1:5000-20000

Format

Liquid in PBS containing 50% glycerol, 0.5% BSA and 0.09% (W/V) sodium azide.

Storage Conditions

-20°C

CD105 Polyclonal Antibody - Protein Information**Name** ENG**Synonyms** END**Function**

Vascular endothelium glycoprotein that plays an important role in the regulation of angiogenesis (PubMed: [21737454](http://www.uniprot.org/citations/21737454)), PubMed: [23300529](http://www.uniprot.org/citations/23300529)). Required for normal structure and integrity of adult vasculature (PubMed: [7894484](http://www.uniprot.org/citations/7894484)). Regulates the migration of vascular endothelial cells (PubMed: [17540773](http://www.uniprot.org/citations/17540773)). Required for normal extraembryonic angiogenesis and for embryonic heart development (By similarity). May regulate endothelial cell shape changes in response to blood flow, which drive vascular remodeling and establishment of normal vascular morphology during angiogenesis (By similarity). May play a critical role in the binding of endothelial cells to integrins and/or other RGD receptors (PubMed: [1692830](http://www.uniprot.org/citations/1692830)). Acts as a TGF-beta coreceptor and is involved in the TGF-beta/BMP signaling cascade that ultimately leads to the activation of SMAD transcription factors (PubMed: 21737454, PubMed:22347366, PubMed:23300529, PubMed:8370410). Required for GDF2/BMP9 signaling through SMAD1 in endothelial cells and modulates TGFB1 signaling through SMAD3 (PubMed:21737454, PubMed:22347366, PubMed:23300529).

Cellular Location

Cell membrane; Single-pass type I membrane protein

Tissue Location

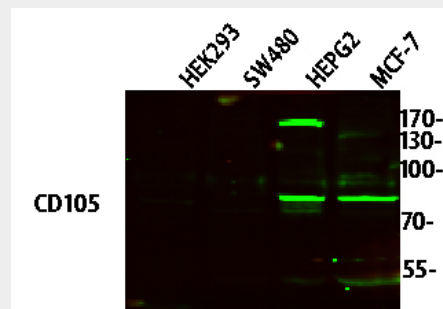
Detected on umbilical vein endothelial cells (PubMed:10625079). Detected in placenta (at protein level) (PubMed:1692830). Detected on endothelial cells (PubMed:1692830)

CD105 Polyclonal Antibody - Protocols

Provided below are standard protocols that you may find useful for product applications.

- [Western Blot](#)
- [Blocking Peptides](#)
- [Dot Blot](#)
- [Immunohistochemistry](#)
- [Immunofluorescence](#)
- [Immunoprecipitation](#)
- [Flow Cytometry](#)
- [Cell Culture](#)

CD105 Polyclonal Antibody - Images



CD105 Polyclonal Antibody - Background

Vascular endothelium glycoprotein that plays an important role in the regulation of angiogenesis (PubMed:21737454, PubMed:23300529). Required for normal structure and integrity of adult vasculature (PubMed:7894484). Regulates the migration of vascular endothelial cells (PubMed:17540773). Required for normal extraembryonic angiogenesis and for embryonic heart development (By similarity). May regulate endothelial cell shape changes in response to blood flow,

which drive vascular remodeling and establishment of normal vascular morphology during angiogenesis (By similarity). May play a critical role in the binding of endothelial cells to integrins and/or other RGD receptors (PubMed:1692830). Acts as TGF-beta coreceptor and is involved in the TGF-beta/BMP signaling cascade that ultimately leads to the activation of SMAD transcription factors (PubMed:8370410, PubMed:21737454, PubMed:22347366, PubMed:23300529). Required for GDF2/BMP9 signaling through SMAD1 in endothelial cells and modulates TGFB1 signaling through SMAD3 (PubMed:21737454, PubMed:22347366, PubMed:23300529).