

**CETP Antibody (N-term)**  
**Purified Rabbit Polyclonal Antibody (Pab)**  
**Catalog # AP7440a**

**Specification**

---

**CETP Antibody (N-term) - Product Information**

Application	<b>WB,E</b>
Primary Accession	<a href="#">P11597</a>
Reactivity	<b>Human</b>
Host	<b>Rabbit</b>
Clonality	<b>Polyclonal</b>
Isotype	<b>Rabbit IgG</b>
Antigen Region	<b>34-65</b>

**CETP Antibody (N-term) - Additional Information**

**Gene ID** 1071

**Other Names**

Cholesteryl ester transfer protein, Lipid transfer protein I {ECO:0000312|MIM:118470}, CETP (<a href="http://www.genenames.org/cgi-bin/gene\_symbol\_report?hgnc\_id=1869" target="\_blank">HGNC:1869</a>)

**Target/Specificity**

This CETP antibody is generated from rabbits immunized with a KLH conjugated synthetic peptide between 34-65 amino acids from the N-terminal region of human CETP.

**Dilution**

WB~~1:1000

**Format**

Purified polyclonal antibody supplied in PBS with 0.09% (W/V) sodium azide. This antibody is prepared by Saturated Ammonium Sulfate (SAS) precipitation followed by dialysis against PBS.

**Storage**

Maintain refrigerated at 2-8°C for up to 2 weeks. For long term storage store at -20°C in small aliquots to prevent freeze-thaw cycles.

**Precautions**

CETP Antibody (N-term) is for research use only and not for use in diagnostic or therapeutic procedures.

**CETP Antibody (N-term) - Protein Information**

**Name** CETP ([HGNC:1869](#))

**Function** Involved in the transfer of neutral lipids, including cholesteryl ester and triglyceride, among lipoprotein particles. Allows the net movement of cholesteryl ester from high density

lipoproteins/HDL to triglyceride-rich very low density lipoproteins/VLDL, and the equimolar transport of triglyceride from VLDL to HDL (PubMed:[24293641](#), PubMed:[3281933](#), PubMed:[3600759](#)). Regulates the reverse cholesterol transport, by which excess cholesterol is removed from peripheral tissues and returned to the liver for elimination (PubMed:[17237796](#)).

#### Cellular Location

Secreted. Note=Secreted in plasma

#### Tissue Location

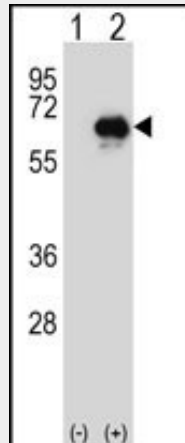
Expressed by the liver and secreted in plasma.

### CETP Antibody (N-term) - Protocols

Provided below are standard protocols that you may find useful for product applications.

- [Western Blot](#)
- [Blocking Peptides](#)
- [Dot Blot](#)
- [Immunohistochemistry](#)
- [Immunofluorescence](#)
- [Immunoprecipitation](#)
- [Flow Cytometry](#)
- [Cell Culture](#)

### CETP Antibody (N-term) - Images



Western blot analysis of CETP (arrow) using rabbit polyclonal CETP Antibody (N-term) (Cat.#AP7440a). 293 cell lysates (2 ug/lane) either nontransfected (Lane 1) or transiently transfected (Lane 2) with the CETP gene.

### CETP Antibody (N-term) - Background

Cholesteryl ester transfer protein (CETP) transfers cholesteryl esters between lipoproteins. CETP may effect susceptibility to atherosclerosis.

### CETP Antibody (N-term) - References

Nagano M., Yamashita S., Hirano K.J. Lipid Res. 43:1011-1018(2002) Morabia A., Cayanis E., Costanza M.C.Hum. Mol. Genet. 12:2733-2743(2003) Liu T., Qian W.-J., Gritsenko M.A.J. Proteome Res. 4:2070-2080(2005)