

LSHR Polyclonal Antibody
Catalog # AP74341**Specification**

LSHR Polyclonal Antibody - Product Information

Application	WB
Primary Accession	P22888
Reactivity	Human, Mouse, Rat
Host	Rabbit
Clonality	Polyclonal

LSHR Polyclonal Antibody - Additional Information**Gene ID** 3973**Other Names**

Lutropin-choriogonadotropic hormone receptor (LH/CG-R) (Luteinizing hormone receptor) (LHR) (LSH-R)

Dilution

WB~~WB 1:500-2000, ELISA 1:10000-20000

Format

Liquid in PBS containing 50% glycerol, 0.5% BSA and 0.09% (W/V) sodium azide.

Storage Conditions

-20°C

LSHR Polyclonal Antibody - Protein Information**Name** LHCGR**Synonyms** LCGR, LGR2, LHRHR**Function**

Receptor for lutropin-choriogonadotropic hormone (PubMed:11847099). The activity of this receptor is mediated by G proteins which activate adenylyate cyclase (PubMed:11847099).

Cellular Location

Cell membrane; Multi-pass membrane protein

Tissue Location

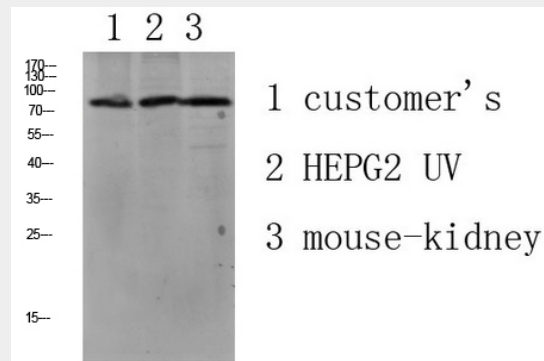
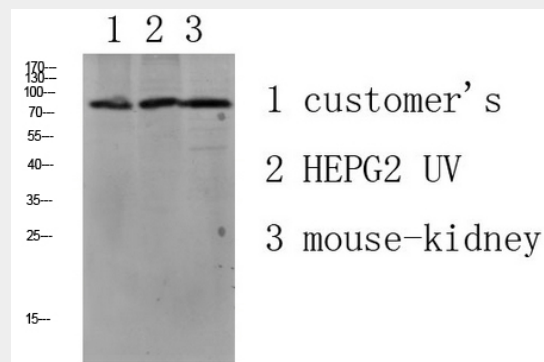
Gonadal and thyroid cells.

LSHR Polyclonal Antibody - Protocols

Provided below are standard protocols that you may find useful for product applications.

- [Western Blot](#)
- [Blocking Peptides](#)
- [Dot Blot](#)
- [Immunohistochemistry](#)
- [Immunofluorescence](#)
- [Immunoprecipitation](#)
- [Flow Cytometry](#)
- [Cell Culture](#)

LSHR Polyclonal Antibody - Images



LSHR Polyclonal Antibody - Background

Receptor for lutropin-choriogonadotropic hormone (PubMed:11847099). The activity of this receptor is mediated by G proteins which activate adenylate cyclase (PubMed:11847099).