

**MYBPC3 Polyclonal Antibody**  
Catalog # AP74333**Specification**

---

**MYBPC3 Polyclonal Antibody - Product Information**

Application	WB
Primary Accession	<a href="#">Q14896</a>
Reactivity	Human, Mouse, Rat
Host	Rabbit
Clonality	Polyclonal

**MYBPC3 Polyclonal Antibody - Additional Information****Gene ID** 4607**Other Names**

Myosin-binding protein C, cardiac-type (Cardiac MyBP-C) (C-protein, cardiac muscle isoform)

**Dilution**

WB~~WB 1:500-2000, ELISA 1:10000-20000

**Format**

Liquid in PBS containing 50% glycerol, 0.5% BSA and 0.09% (W/V) sodium azide.

**Storage Conditions**

-20°C

**MYBPC3 Polyclonal Antibody - Protein Information****Name** MYBPC3**Function**

Thick filament-associated protein located in the crossbridge region of vertebrate striated muscle a bands. In vitro it binds MHC, F- actin and native thin filaments, and modifies the activity of actin-activated myosin ATPase. It may modulate muscle contraction or may play a more structural role.

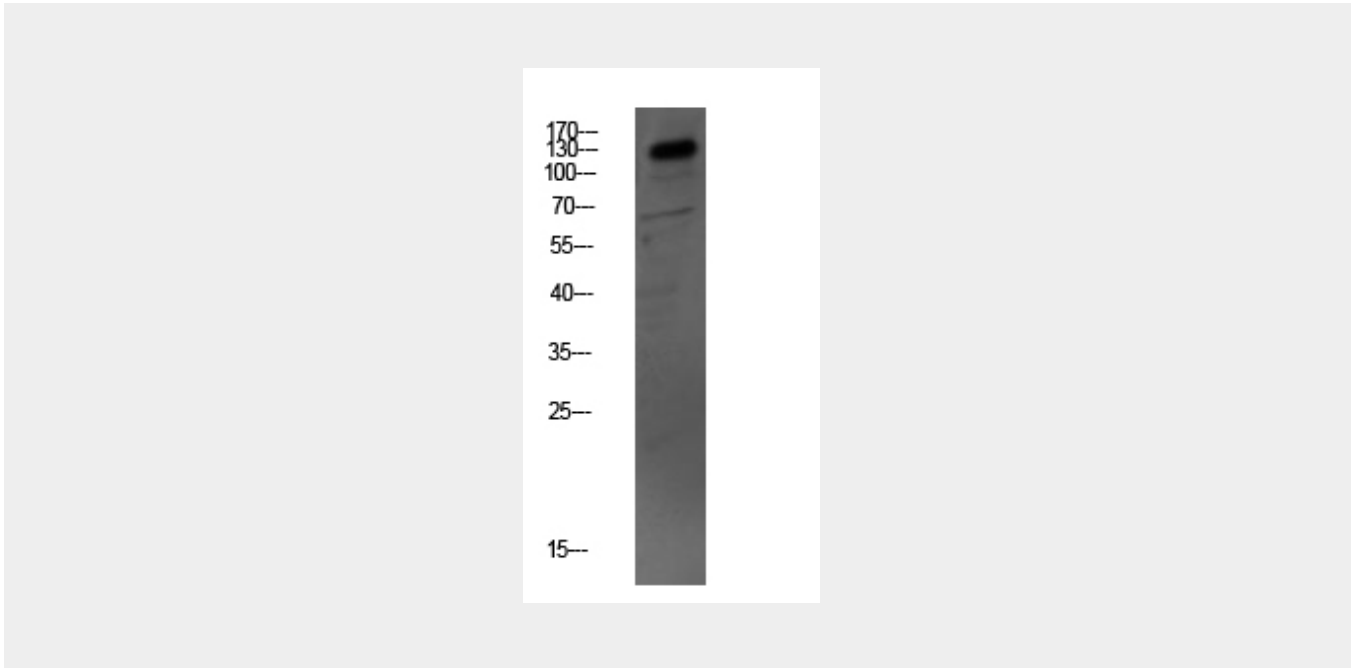
**MYBPC3 Polyclonal Antibody - Protocols**

Provided below are standard protocols that you may find useful for product applications.

- [Western Blot](#)
- [Blocking Peptides](#)
- [Dot Blot](#)
- [Immunohistochemistry](#)
- [Immunofluorescence](#)
- [Immunoprecipitation](#)

- [Flow Cytometry](#)
- [Cell Culture](#)

### MYBPC3 Polyclonal Antibody - Images



### MYBPC3 Polyclonal Antibody - Background

Thick filament-associated protein located in the crossbridge region of vertebrate striated muscle a bands. In vitro it binds MHC, F-actin and native thin filaments, and modifies the activity of actin-activated myosin ATPase. It may modulate muscle contraction or may play a more structural role.