

**CDKN3 Polyclonal Antibody**  
Catalog # AP74324**Specification****CDKN3 Polyclonal Antibody - Product Information**

Application	WB
Primary Accession	<a href="#">Q16667</a>
Reactivity	Human, Mouse, Rat
Host	Rabbit
Clonality	Polyclonal

**CDKN3 Polyclonal Antibody - Additional Information****Gene ID** 1033**Other Names**

Cyclin-dependent kinase inhibitor 3 (EC 3.1.3.16) (EC 3.1.3.48) (CDK2-associated dual-specificity phosphatase) (Cyclin-dependent kinase interactor 1) (Cyclin-dependent kinase-interacting protein 2) (Kinase-associated phosphatase)

**Dilution**

WB~~WB 1:500-2000, ELISA 1:10000-20000

**Format**

Liquid in PBS containing 50% glycerol, 0.5% BSA and 0.09% (W/V) sodium azide.

**Storage Conditions**

-20°C

**CDKN3 Polyclonal Antibody - Protein Information****Name** CDKN3 ([HGNC:1791](#))**Synonyms** CDI1, CIP2, KAP**Function**

May play a role in cell cycle regulation. Dual specificity CC phosphatase active toward substrates containing either phosphotyrosine or phosphoserine residues (PubMed:<a href="http://www.uniprot.org/citations/8127873" target="\_blank">8127873</a>, PubMed:<a href="http://www.uniprot.org/citations/8242750" target="\_blank">8242750</a>). Dephosphorylates CDK2 at 'Thr-160' in a cyclin-dependent manner (PubMed:<a href="http://www.uniprot.org/citations/7569954" target="\_blank">7569954</a>).

**Cellular Location**

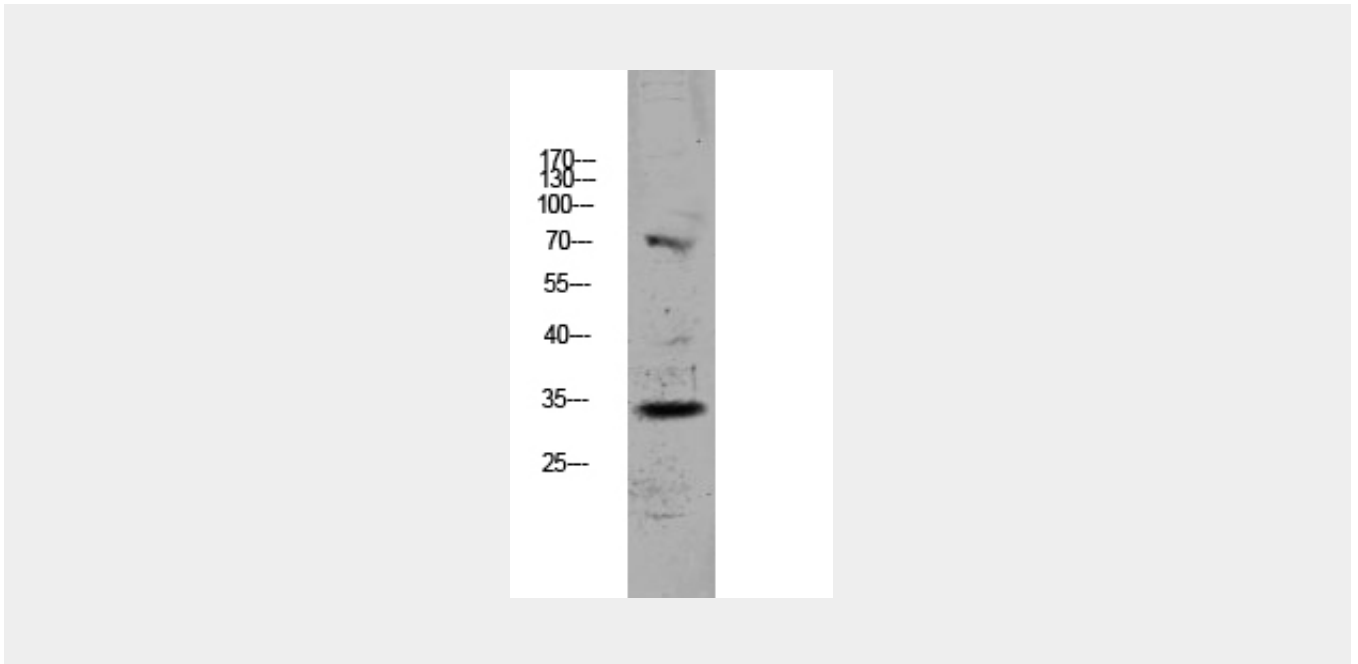
Cytoplasm, perinuclear region

## CDKN3 Polyclonal Antibody - Protocols

Provided below are standard protocols that you may find useful for product applications.

- [Western Blot](#)
- [Blocking Peptides](#)
- [Dot Blot](#)
- [Immunohistochemistry](#)
- [Immunofluorescence](#)
- [Immunoprecipitation](#)
- [Flow Cytometry](#)
- [Cell Culture](#)

## CDKN3 Polyclonal Antibody - Images



## CDKN3 Polyclonal Antibody - Background

May play a role in cell cycle regulation. Dual specificity phosphatase active toward substrates containing either phosphotyrosine or phosphoserine residues. Dephosphorylates CDK2 at 'Thr-160' in a cyclin-dependent manner.