

Granzyme B Polyclonal Antibody
Catalog # AP74319**Specification****Granzyme B Polyclonal Antibody - Product Information**

Application	IHC
Primary Accession	P10144
Reactivity	Human, Mouse, Rat
Host	Rabbit
Clonality	Polyclonal

Granzyme B Polyclonal Antibody - Additional Information

Gene ID 3002

Other Names

Granzyme B (EC 3.4.21.79) (C11) (CTLA-1) (Cathepsin G-like 1) (CTSL1) (Cytotoxic T-lymphocyte proteinase 2) (Lymphocyte protease) (Fragmentin-2) (Granzyme-2) (Human lymphocyte protein) (HLP) (SECT) (T-cell serine protease 1-3E)

Dilution

IHC~~IHC-p: 100-300.WB 1:500-2000, ELISA 1:10000-20000

Format

Liquid in PBS containing 50% glycerol, 0.5% BSA and 0.09% (W/V) sodium azide.

Storage Conditions

-20°C

Granzyme B Polyclonal Antibody - Protein Information**Name** GZMB {ECO:0000303|PubMed:32188940, ECO:0000312|HGNC:HGNC:4709}**Function**

Abundant protease in the cytosolic granules of cytotoxic T- cells and NK-cells which activates caspase-independent pyroptosis when delivered into the target cell through the immunological synapse (PubMed:1985927, PubMed:3262682, PubMed:3263427). It cleaves after Asp (PubMed:1985927, PubMed:8258716). Once delivered into the target cell, acts by catalyzing cleavage of gasdermin-E (GSDME), releasing the pore-forming moiety of GSDME, thereby triggering pyroptosis and target cell death (PubMed:31953257, PubMed:32188940). Seems to be linked to an activation cascade of caspases (aspartate-specific cysteine proteases) responsible for apoptosis execution. Cleaves caspase-3, -9 and -10 (CASP3, CASP9 and CASP10, respectively) to

give rise to active enzymes mediating apoptosis (PubMed:9852092). Cleaves and activates CASP7 in response to bacterial infection, promoting plasma membrane repair (By similarity).

Cellular Location

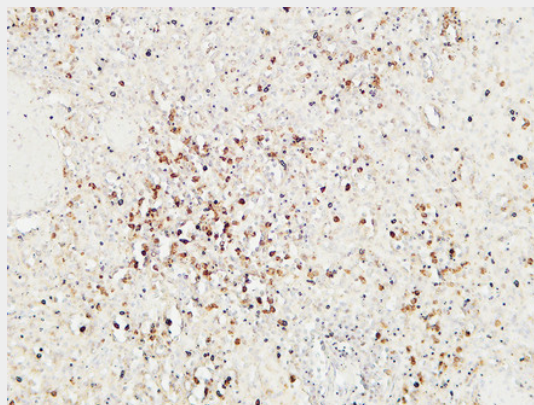
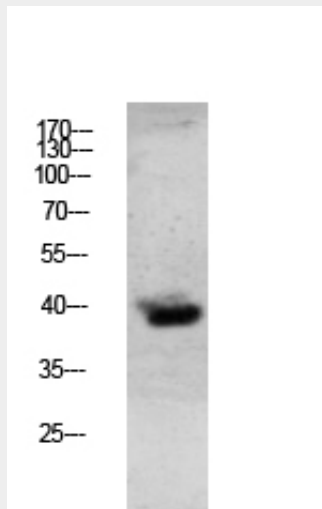
Secreted. Cytolytic granule. Note=Delivered into the target cell by perforin (PubMed:20038786).

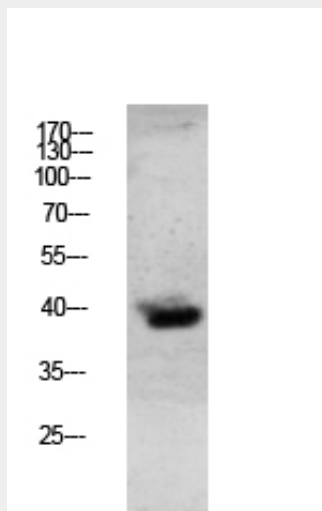
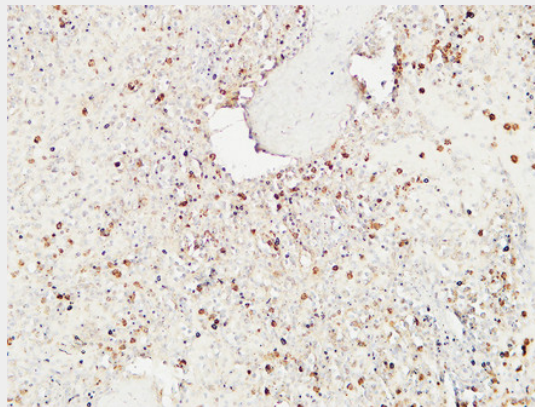
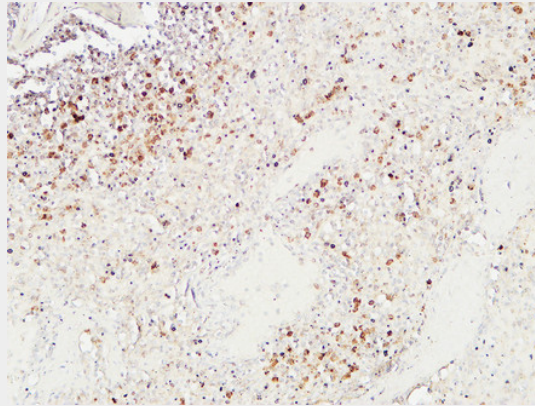
Granzyme B Polyclonal Antibody - Protocols

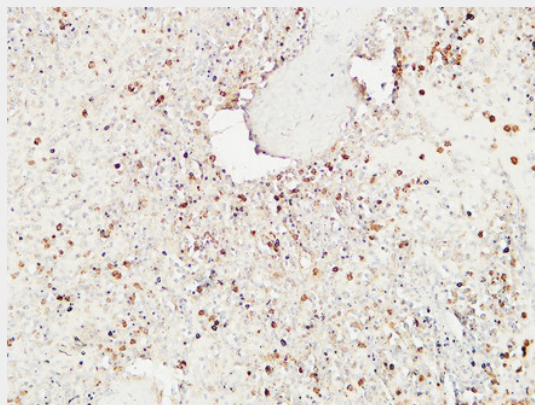
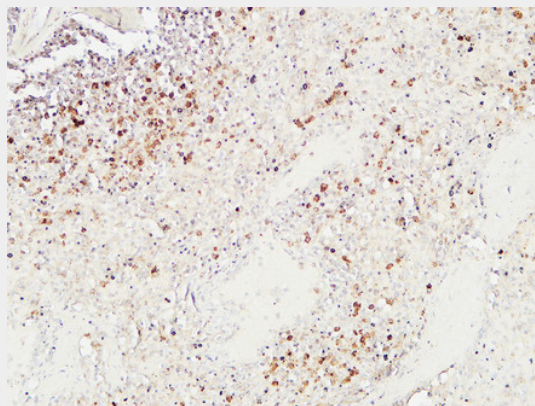
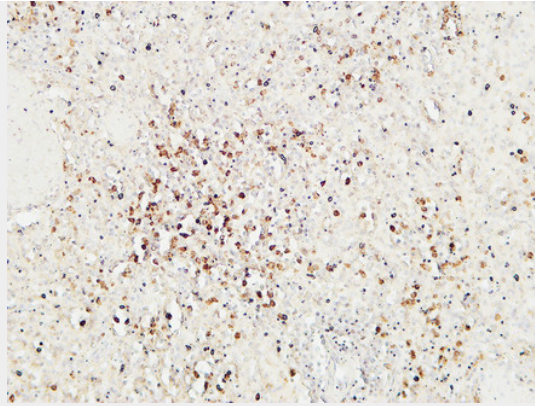
Provided below are standard protocols that you may find useful for product applications.

- [Western Blot](#)
- [Blocking Peptides](#)
- [Dot Blot](#)
- [Immunohistochemistry](#)
- [Immunofluorescence](#)
- [Immunoprecipitation](#)
- [Flow Cytometry](#)
- [Cell Culture](#)

Granzyme B Polyclonal Antibody - Images







Granzyme B Polyclonal Antibody - Background

This enzyme is necessary for target cell lysis in cell-mediated immune responses. It cleaves after Asp. Seems to be linked to an activation cascade of caspases (aspartate-specific cysteine proteases) responsible for apoptosis execution. Cleaves caspase-3, -7, -9 and 10 to give rise to active enzymes mediating apoptosis.