

BACE Polyclonal Antibody
Catalog # AP74289**Specification**

BACE Polyclonal Antibody - Product Information

Application	WB
Primary Accession	P56817
Reactivity	Human, Mouse, Rat
Host	Rabbit
Clonality	Polyclonal

BACE Polyclonal Antibody - Additional Information**Gene ID** 23621**Other Names**

Beta-secretase 1 (EC 3.4.23.46) (Aspartyl protease 2) (ASP2) (Asp 2) (Beta-site amyloid precursor protein cleaving enzyme 1) (Beta-site APP cleaving enzyme 1) (Memapsin-2) (Membrane-associated aspartic protease 2)

Dilution

WB~~WB 1:500-2000, ELISA 1:10000-20000

Format

Liquid in PBS containing 50% glycerol, 0.5% BSA and 0.09% (W/V) sodium azide.

Storage Conditions

-20°C

BACE Polyclonal Antibody - Protein Information**Name** BACE1 ([HGNC:933](#))**Synonyms** BACE, KIAA1149**Function**

Responsible for the proteolytic processing of the amyloid precursor protein (APP). Cleaves at the N-terminus of the A-beta peptide sequence, between residues 671 and 672 of APP, leads to the generation and extracellular release of beta-cleaved soluble APP, and a corresponding cell-associated C-terminal fragment which is later released by gamma-secretase (PubMed:10656250, PubMed:10677483, PubMed:20354142). Cleaves CHL1 (By similarity).

Cellular Location

Cell membrane; Single-pass type I membrane protein Golgi apparatus, trans-Golgi network. Endoplasmic reticulum. Endosome. Cell surface. Cytoplasmic vesicle membrane; Single-pass type I

membrane protein. Membrane raft {ECO:0000250|UniProtKB:P56818}. Lysosome. Late endosome. Early endosome. Recycling endosome. Cell projection, axon {ECO:0000250|UniProtKB:P56818}. Cell projection, dendrite {ECO:0000250|UniProtKB:P56818}. Note=Predominantly localized to the later Golgi/trans-Golgi network (TGN) and minimally detectable in the early Golgi compartments. A small portion is also found in the endoplasmic reticulum, endosomes and on the cell surface (PubMed:11466313, PubMed:17425515). Colocalization with APP in early endosomes is due to addition of bisecting N-acetylglucosamine which blocks targeting to late endosomes and lysosomes (By similarity) Retrogradely transported from endosomal compartments to the trans-Golgi network in a phosphorylation- and GGA1- dependent manner (PubMed:15886016). {ECO:0000250|UniProtKB:P56818, ECO:0000269|PubMed:11466313, ECO:0000269|PubMed:15886016, ECO:0000269|PubMed:17425515}

Tissue Location

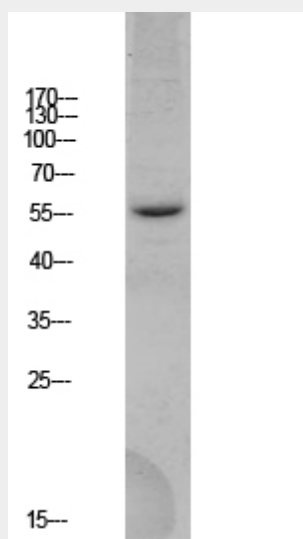
Expressed at high levels in the brain and pancreas. In the brain, expression is highest in the substantia nigra, locus coeruleus and medulla oblongata.

BACE Polyclonal Antibody - Protocols

Provided below are standard protocols that you may find useful for product applications.

- [Western Blot](#)
- [Blocking Peptides](#)
- [Dot Blot](#)
- [Immunohistochemistry](#)
- [Immunofluorescence](#)
- [Immunoprecipitation](#)
- [Flow Cytometry](#)
- [Cell Culture](#)

BACE Polyclonal Antibody - Images



BACE Polyclonal Antibody - Background

Responsible for the proteolytic processing of the amyloid precursor protein (APP). Cleaves at the N-terminus of the A-beta peptide sequence, between residues 671 and 672 of APP, leads to the

generation and extracellular release of beta-cleaved soluble APP, and a corresponding cell-associated C-terminal fragment which is later released by gamma-secretase. Cleaves APP with much more catalytic efficiency than for the wild-type.