

**C1RL Polyclonal Antibody**  
Catalog # AP74287**Specification**

---

**C1RL Polyclonal Antibody - Product Information**

Application	WB
Primary Accession	<a href="#">Q9NZP8</a>
Reactivity	Human
Host	Rabbit
Clonality	Polyclonal

**C1RL Polyclonal Antibody - Additional Information****Gene ID** 51279**Other Names**

Complement C1r subcomponent-like protein (C1r-LP) (C1r-like protein) (EC 3.4.21.-) (C1r-like serine protease analog protein) (CLSPa)

**Dilution**

WB~~WB 1:500-2000, ELISA 1:10000-20000

**Format**

Liquid in PBS containing 50% glycerol, 0.5% BSA and 0.09% (W/V) sodium azide.

**Storage Conditions**

-20°C

**C1RL Polyclonal Antibody - Protein Information****Name** C1RL**Synonyms** C1RL1, C1RLP, CLSPA**Function**

Mediates the proteolytic cleavage of HP/haptoglobin in the endoplasmic reticulum.

**Cellular Location**

Secreted.

**Tissue Location**

Highly expressed in placenta, liver, kidney, pancreas, moderately in lung, spleen, prostate, ovary, colon, and PBL, and weakly in heart, skeletal muscle, thymus, testis, and small intestine. Expressed in PC-3 (prostate adenocarcinoma) and SK-OV-3 (ovary adenocarcinoma) cells, but not in LoVo and HT-29 (colon adenocarcinoma), SMMC7721 (hepatocellular carcinoma), CaoV-3 (ovary adenocarcinoma), HeLa (cervix epithelioid carcinoma), MCF-7 (breast adenocarcinoma), U-251MG (glioma) or A-549 (lung carcinoma) cells Widely expressed in myeloid leukemia cell lines, including K-562 (chronic myelogenous leukemia), THP-1 (myelomonocytic leukemia), HL-60 and NB4

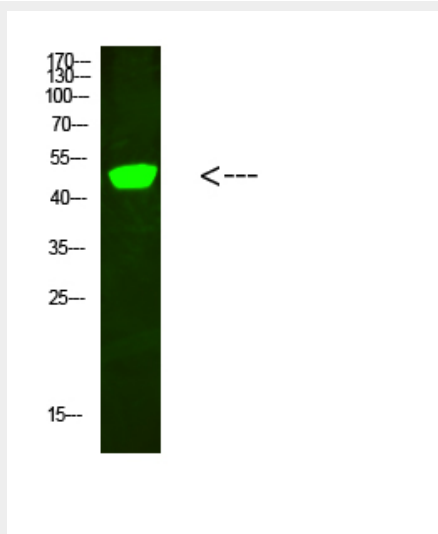
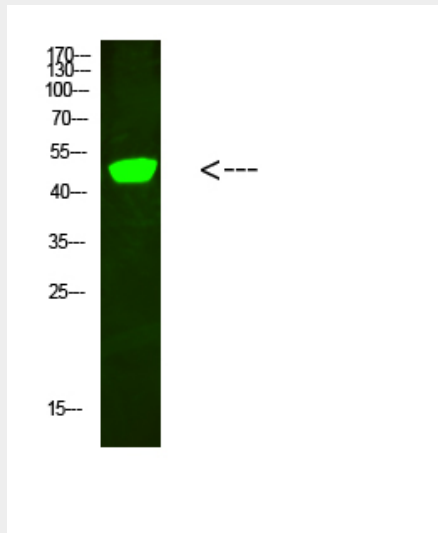
(promyelocytic leukemia), and KG-1 (acute myelogenous leukemia) cells. Expressed mainly in the liver and in serum (at protein level)

### C1RL Polyclonal Antibody - Protocols

Provided below are standard protocols that you may find useful for product applications.

- [Western Blot](#)
- [Blocking Peptides](#)
- [Dot Blot](#)
- [Immunohistochemistry](#)
- [Immunofluorescence](#)
- [Immunoprecipitation](#)
- [Flow Cytometry](#)
- [Cell Culture](#)

### C1RL Polyclonal Antibody - Images



**C1RL Polyclonal Antibody - Background**

Mediates the proteolytic cleavage of HP/haptoglobin in the endoplasmic reticulum.