

COL8A2 Polyclonal Antibody
Catalog # AP74271**Specification**

COL8A2 Polyclonal Antibody - Product Information

Application	WB
Primary Accession	P25067
Reactivity	Human, Mouse, Rat
Host	Rabbit
Clonality	Polyclonal

COL8A2 Polyclonal Antibody - Additional Information**Gene ID** 1296**Other Names**

Collagen alpha-2(VIII) chain (Endothelial collagen)

Dilution

WB~~WB 1:500-2000, ELISA 1:10000-20000

Format

Liquid in PBS containing 50% glycerol, 0.5% BSA and 0.09% (W/V) sodium azide.

Storage Conditions

-20°C

COL8A2 Polyclonal Antibody - Protein Information**Name** COL8A2**Function**

Macromolecular component of the subendothelium. Major component of the Descemet's membrane (basement membrane) of corneal endothelial cells. Also a component of the endothelia of blood vessels. Necessary for migration and proliferation of vascular smooth muscle cells and thus, has a potential role in the maintenance of vessel wall integrity and structure, in particular in atherogenesis (By similarity).

Cellular Location

Secreted, extracellular space, extracellular matrix, basement membrane

Tissue Location

Expressed primarily in the subendothelium of large blood vessels. Also expressed in arterioles and venules in muscle, heart, kidney, spleen, umbilical cord, liver and lung and is also found in connective tissue layers around hair follicles, around nerve bundles in muscle, in the dura of the optic nerve, in cornea and sclera, and in the perichondrium of cartilaginous tissues. In the kidney, expressed in mesangial cells, glomerular endothelial cells, and tubular epithelial cells. Also expressed in mast cells, and in astrocytes during the repair process. Expressed in Descemet's

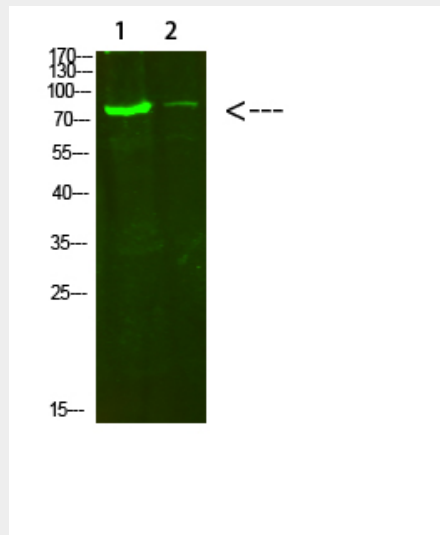
membrane

COL8A2 Polyclonal Antibody - Protocols

Provided below are standard protocols that you may find useful for product applications.

- [Western Blot](#)
- [Blocking Peptides](#)
- [Dot Blot](#)
- [Immunohistochemistry](#)
- [Immunofluorescence](#)
- [Immunoprecipitation](#)
- [Flow Cytometry](#)
- [Cell Culture](#)

COL8A2 Polyclonal Antibody - Images



COL8A2 Polyclonal Antibody - Background

Macromolecular component of the subendothelium. Major component of the Descemet's membrane (basement membrane) of corneal endothelial cells. Also component of the endothelia of blood vessels. Necessary for migration and proliferation of vascular smooth muscle cells and thus, has a potential role in the maintenance of vessel wall integrity and structure, in particular in atherogenesis (By similarity).