

PBEF Polyclonal Antibody
Catalog # AP74269**Specification**

PBEF Polyclonal Antibody - Product Information

Application	WB
Primary Accession	P43490
Reactivity	Human, Mouse, Rat
Host	Rabbit
Clonality	Polyclonal

PBEF Polyclonal Antibody - Additional Information**Gene ID** 10135**Other Names**

Nicotinamide phosphoribosyltransferase (NAMPRTase) (Nampt) (EC 2.4.2.12) (Pre-B-cell colony-enhancing factor 1) (Pre-B cell-enhancing factor) (Visfatin)

Dilution

WB~~1:500-2000

Format

Liquid in PBS containing 50% glycerol, 0.5% BSA and 0.09% (W/V) sodium azide.

Storage Conditions

-20°C

PBEF Polyclonal Antibody - Protein Information**Name** NAMPT**Synonyms** PBEF, PBEF1**Function**

Catalyzes the condensation of nicotinamide with 5- phosphoribosyl-1-pyrophosphate to yield nicotinamide mononucleotide, an intermediate in the biosynthesis of NAD. It is the rate limiting component in the mammalian NAD biosynthesis pathway. The secreted form behaves both as a cytokine with immunomodulating properties and an adipokine with anti-diabetic properties, it has no enzymatic activity, partly because of lack of activation by ATP, which has a low level in extracellular space and plasma. Plays a role in the modulation of circadian clock function. NAMPT-dependent oscillatory production of NAD regulates oscillation of clock target gene expression by releasing the core clock component: CLOCK-BMAL1 heterodimer from NAD-dependent SIRT1- mediated suppression (By similarity).

Cellular Location

Nucleus. Cytoplasm {ECO:0000250|UniProtKB:Q99KQ4}. Secreted Note=Under non-inflammatory conditions, visfatin predominantly exhibits a granular pattern within the nucleus. Secreted by

endothelial cells upon IL-1beta stimulation. Abundantly secreted in milk, reaching 100- fold higher concentrations compared to maternal serum

Tissue Location

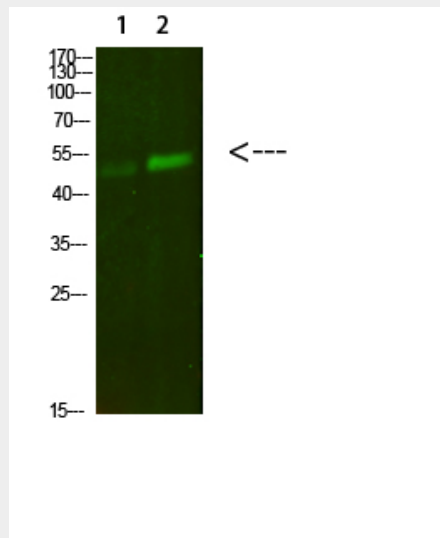
Expressed in large amounts in bone marrow, liver tissue, and muscle. Also present in heart, placenta, lung, and kidney tissues

PBEF Polyclonal Antibody - Protocols

Provided below are standard protocols that you may find useful for product applications.

- [Western Blot](#)
- [Blocking Peptides](#)
- [Dot Blot](#)
- [Immunohistochemistry](#)
- [Immunofluorescence](#)
- [Immunoprecipitation](#)
- [Flow Cytometry](#)
- [Cell Culture](#)

PBEF Polyclonal Antibody - Images



Western Blot analysis of 1,mouse-lung 2,mouse-kidney cells using primary antibody diluted at 1:500(4°C overnight). Secondary antibody □Goat Anti-rabbit IgG IRDye 800(diluted at 1:5000, 25°C, 1 hour)

PBEF Polyclonal Antibody - Background

Catalyzes the condensation of nicotinamide with 5- phosphoribosyl-1-pyrophosphate to yield nicotinamide mononucleotide, an intermediate in the biosynthesis of NAD. It is the rate limiting component in the mammalian NAD biosynthesis pathway. The secreted form behaves both as a cytokine with immunomodulating properties and an adipokine with anti-diabetic properties, it has no enzymatic activity, partly because of lack of activation by ATP, which has a low level in extracellular space and plasma. Plays a role in the modulation of circadian clock function. NAMPT-dependent oscillatory production of NAD regulates oscillation of clock target gene expression by releasing the core clock component: CLOCK-ARNTL/BMAL1 heterodimer from NAD-dependent SIRT1-mediated suppression (By similarity).