

Cardiotrophin-1 Polyclonal Antibody
Catalog # AP74246**Specification**

Cardiotrophin-1 Polyclonal Antibody - Product Information

Application	WB
Primary Accession	Q16619
Reactivity	Human, Mouse, Rat
Host	Rabbit
Clonality	Polyclonal

Cardiotrophin-1 Polyclonal Antibody - Additional Information**Gene ID** 1489**Other Names**

Cardiotrophin-1 (CT-1)

Dilution

WB~~WB 1:500-2000, ELISA 1:10000-20000

Format

Liquid in PBS containing 50% glycerol, 0.5% BSA and 0.09% (W/V) sodium azide.

Storage Conditions

-20°C

Cardiotrophin-1 Polyclonal Antibody - Protein Information**Name** CTF1**Function**

Induces cardiac myocyte hypertrophy in vitro. Binds to and activates the ILST/gp130 receptor.

Cellular Location

Secreted.

Tissue Location

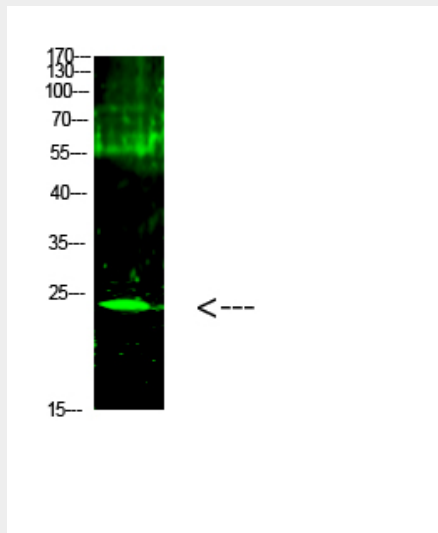
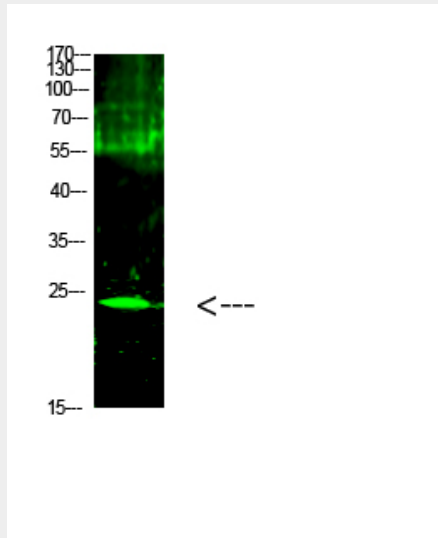
Highly expressed in heart, skeletal muscle, prostate and ovary. Lower levels in lung, kidney, pancreas, thymus, testis and small intestine. Little or no expression in brain, placenta, liver, spleen, colon or peripheral blood leukocytes

Cardiotrophin-1 Polyclonal Antibody - Protocols

Provided below are standard protocols that you may find useful for product applications.

- [Western Blot](#)
- [Blocking Peptides](#)
- [Dot Blot](#)
- [Immunohistochemistry](#)
- [Immunofluorescence](#)
- [Immunoprecipitation](#)
- [Flow Cytometry](#)
- [Cell Culture](#)

Cardiotrophin-1 Polyclonal Antibody - Images



Cardiotrophin-1 Polyclonal Antibody - Background

Induces cardiac myocyte hypertrophy in vitro. Binds to and activates the ILST/gp130 receptor.