

## Collagen I Polyclonal Antibody

Catalog # AP74240

### Specification

---

#### Collagen I Polyclonal Antibody - Product Information

Application	WB
Primary Accession	<a href="#">P08123</a>
Reactivity	Human, Mouse, Rat
Host	Rabbit
Clonality	Polyclonal

#### Collagen I Polyclonal Antibody - Additional Information

Gene ID 1278

##### Other Names

Collagen alpha-2(I) chain (Alpha-2 type I collagen)

##### Dilution

WB~~WB 1:500-2000, ELISA 1:10000-20000

##### Format

Liquid in PBS containing 50% glycerol, 0.5% BSA and 0.09% (W/V) sodium azide.

##### Storage Conditions

-20°C

#### Collagen I Polyclonal Antibody - Protein Information

Name COL1A2

##### Function

Type I collagen is a member of group I collagen (fibrillar forming collagen).

##### Cellular Location

Secreted, extracellular space, extracellular matrix {ECO:0000255|PROSITE-ProRule:PRU00793}

##### Tissue Location

Forms the fibrils of tendon, ligaments and bones. In bones the fibrils are mineralized with calcium hydroxyapatite

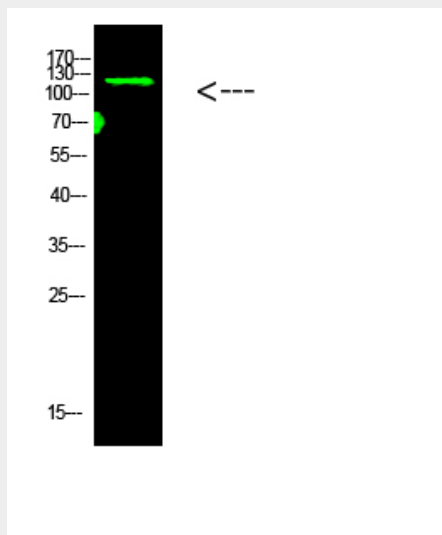
#### Collagen I Polyclonal Antibody - Protocols

Provided below are standard protocols that you may find useful for product applications.

- [Western Blot](#)

- [Blocking Peptides](#)
- [Dot Blot](#)
- [Immunohistochemistry](#)
- [Immunofluorescence](#)
- [Immunoprecipitation](#)
- [Flow Cytometry](#)
- [Cell Culture](#)

### Collagen I Polyclonal Antibody - Images



### Collagen I Polyclonal Antibody - Background

Type I collagen is a member of group I collagen (fibrillar forming collagen).