

**APOD Antibody (N-term)**  
**Purified Rabbit Polyclonal Antibody (Pab)**  
**Catalog # AP7423a**

**Specification**

---

**APOD Antibody (N-term) - Product Information**

|                   |  |
|-------------------|--|
| Application       | WB,E   |
| Primary Accession | <a href="#">P05090</a>   |
| Other Accession   | <a href="#">P23593</a> , <a href="#">P37153</a> , <a href="#">P51910</a> |
| Reactivity        | Human, Mouse   |
| Predicted         | Rabbit, Rat  |
| Host              | Rabbit   |
| Clonality         | Polyclonal   |
| Isotype           | Rabbit IgG   |
| Calculated MW     | 21276  |
| Antigen Region    | 26-53  |

**APOD Antibody (N-term) - Additional Information**

**Gene ID** 347

**Other Names**

Apolipoprotein D, Apo-D, ApoD, APOD

**Target/Specificity**

This APOD antibody is generated from rabbits immunized with a KLH conjugated synthetic peptide between 26-53 amino acids from the N-terminal region of human APOD.

**Dilution**

WB~~1:1000

**Format**

Purified polyclonal antibody supplied in PBS with 0.09% (W/V) sodium azide. This antibody is prepared by Saturated Ammonium Sulfate (SAS) precipitation followed by dialysis against PBS.

**Storage**

Maintain refrigerated at 2-8°C for up to 2 weeks. For long term storage store at -20°C in small aliquots to prevent freeze-thaw cycles.

**Precautions**

APOD Antibody (N-term) is for research use only and not for use in diagnostic or therapeutic procedures.

**APOD Antibody (N-term) - Protein Information**

**Name** APOD

**Function** APOD occurs in the macromolecular complex with lecithin- cholesterol acyltransferase. It

is probably involved in the transport and binding of bilin. Appears to be able to transport a variety of ligands in a number of different contexts.

#### Cellular Location

Secreted.

#### Tissue Location

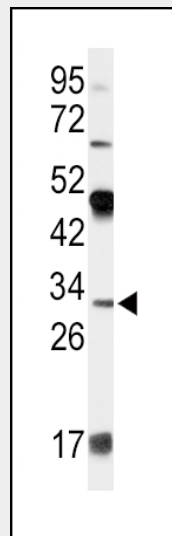
Expressed in liver, intestine, pancreas, kidney, placenta, adrenal, spleen, fetal brain tissue and tears

#### APOD Antibody (N-term) - Protocols

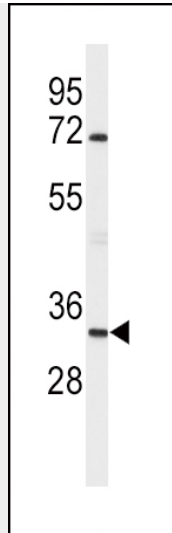
Provided below are standard protocols that you may find useful for product applications.

- [Western Blot](#)
- [Blocking Peptides](#)
- [Dot Blot](#)
- [Immunohistochemistry](#)
- [Immunofluorescence](#)
- [Immunoprecipitation](#)
- [Flow Cytometry](#)
- [Cell Culture](#)

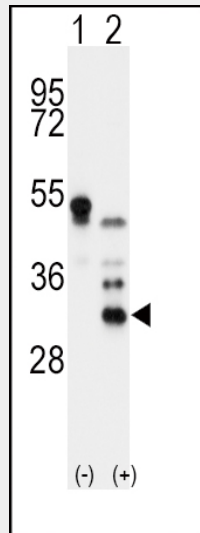
#### APOD Antibody (N-term) - Images



Western blot analysis of APOD Antibody (N-term) (Cat. #AP7423a) in 293 cell line lysates (35ug/lane). APOD (arrow) was detected using the purified Pab.



Western blot analysis of APOD Antibody (N-term) (Cat. #AP7423a) in mouse brain tissue lysates (35ug/lane). APOD (arrow) was detected using the purified Pab.



Western blot analysis of APOD (arrow) using rabbit polyclonal APOD Antibody (N-term) (Cat. #AP7423a) 293 cell lysates (2 ug/lane) either nontransfected (Lane 1) or transiently transfected with the APOD gene (Lane 2) .

#### **APOD Antibody (N-term) - Background**

APOD is a component of high density lipoprotein that has no marked similarity to other apolipoprotein sequences. It has a high degree of homology to plasma retinol-binding protein and other members of the alpha 2 microglobulin protein superfamily of carrier proteins, also known as lipocalins. This glycoprotein is closely associated with the enzyme lecithin:cholesterol acyltransferase - an enzyme involved in lipoprotein metabolism.

#### **APOD Antibody (N-term) - References**

- Do Carmo, S., J. Neurosci. 28 (41), 10330-10338 (2008)
- Chen, Y., Brain Res. 1233, 196-202 (2008)
- Wei, Y.J., Biomarkers 13 (5), 535-548 (2008)