

IL-17D Polyclonal Antibody
Catalog # AP74231**Specification**

IL-17D Polyclonal Antibody - Product Information

Application	IHC
Primary Accession	Q8TAD2
Reactivity	Human
Host	Rabbit
Clonality	Polyclonal

IL-17D Polyclonal Antibody - Additional Information**Gene ID** 53342**Other Names**

Interleukin-17D (IL-17D) (Interleukin-27) (IL-27)

Dilution

IHC~~IHC-p 1:50-200, ELISA 1:10000-20000

Format

Liquid in PBS containing 50% glycerol, 0.5% BSA and 0.09% (W/V) sodium azide.

Storage Conditions

-20°C

IL-17D Polyclonal Antibody - Protein Information**Name** IL17D**Function**

Induces expression of IL6, CXCL8/IL8, and CSF2/GM-CSF from endothelial cells.

Cellular Location

Secreted.

Tissue Location

Expressed preferentially in adipose, skeletal muscle and CNS.

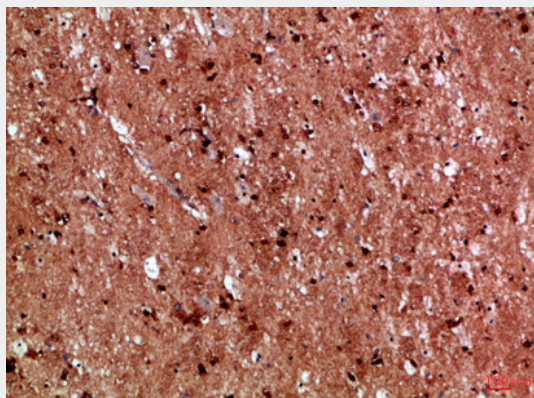
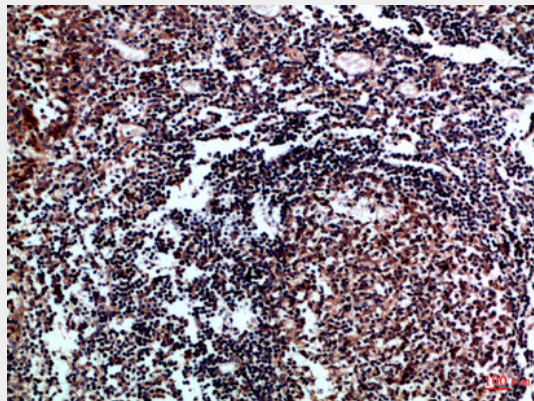
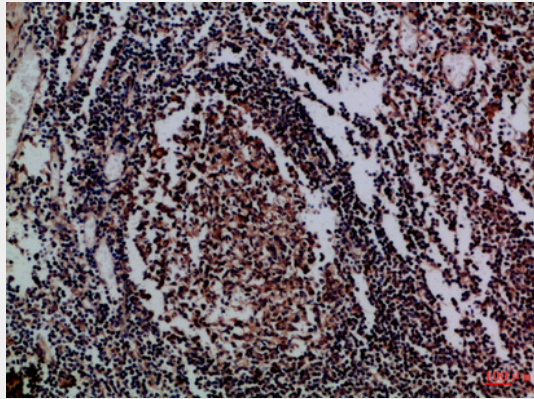
IL-17D Polyclonal Antibody - Protocols

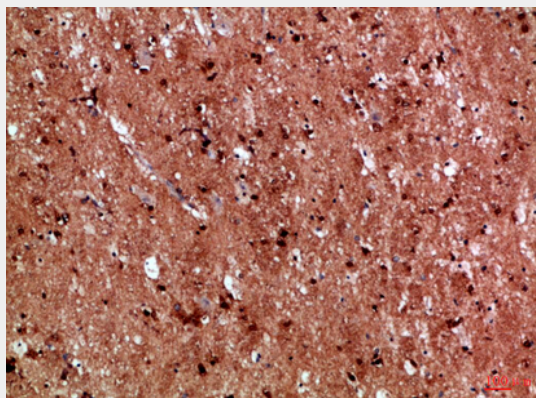
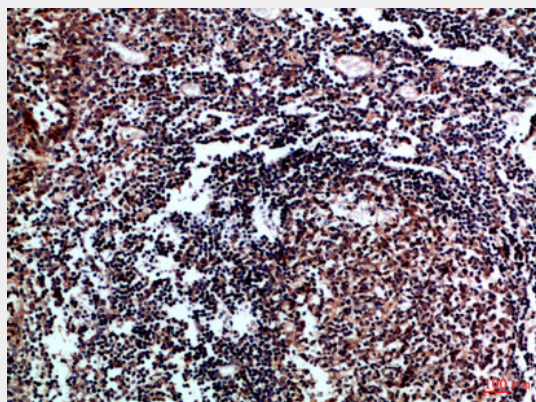
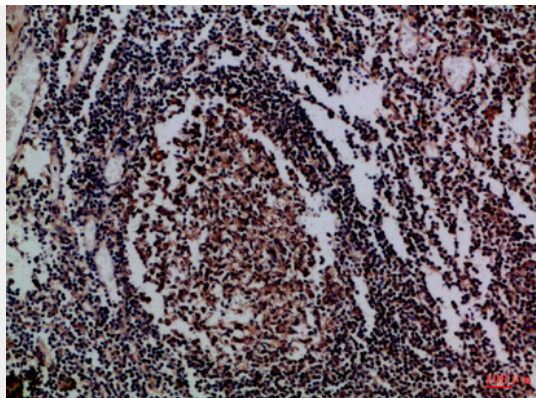
Provided below are standard protocols that you may find useful for product applications.

- [Western Blot](#)
- [Blocking Peptides](#)

- [Dot Blot](#)
- [Immunohistochemistry](#)
- [Immunofluorescence](#)
- [Immunoprecipitation](#)
- [Flow Cytometry](#)
- [Cell Culture](#)

IL-17D Polyclonal Antibody - Images





IL-17D Polyclonal Antibody - Background

Induces expression of IL6, CXCL8/IL8, and CSF2/GM-CSF from endothelial cells.