

Epiregulin Polyclonal Antibody
Catalog # AP74228**Specification**

Epiregulin Polyclonal Antibody - Product Information

Application	IHC
Primary Accession	O14944
Reactivity	Human, Mouse, Rat
Host	Rabbit
Clonality	Polyclonal

Epiregulin Polyclonal Antibody - Additional Information**Gene ID** 2069**Other Names**

Proepiregulin [Cleaved into: Epiregulin (EPR)]

Dilution

IHC~~IHC-p 1:50-200, ELISA 1:10000-20000

Format

Liquid in PBS containing 50% glycerol, 0.5% BSA and 0.09% (W/V) sodium azide.

Storage Conditions

-20°C

Epiregulin Polyclonal Antibody - Protein Information**Name** EREG**Function**

Ligand of the EGF receptor/EGFR and ERBB4. Stimulates EGFR and ERBB4 tyrosine phosphorylation (PubMed:9419975). Contributes to inflammation, wound healing, tissue repair, and oocyte maturation by regulating angiogenesis and vascular remodeling and by stimulating cell proliferation (PubMed:24631357).

Cellular Location

[Epiregulin]: Secreted, extracellular space

Tissue Location

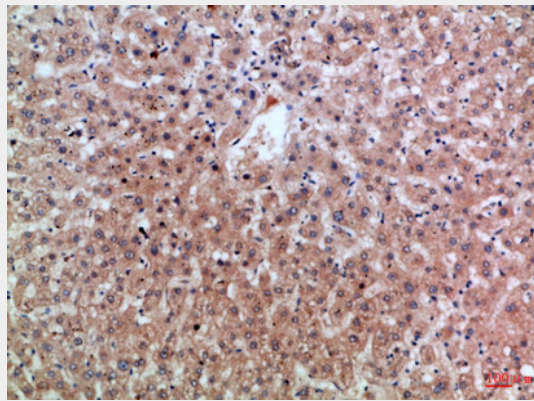
In normal adults, expressed predominantly in the placenta and peripheral blood leukocytes. High levels were detected in carcinomas of the bladder, lung, kidney and colon

Epiregulin Polyclonal Antibody - Protocols

Provided below are standard protocols that you may find useful for product applications.

- [Western Blot](#)
- [Blocking Peptides](#)
- [Dot Blot](#)
- [Immunohistochemistry](#)
- [Immunofluorescence](#)
- [Immunoprecipitation](#)
- [Flow Cytometry](#)
- [Cell Culture](#)

Epiregulin Polyclonal Antibody - Images



Epiregulin Polyclonal Antibody - Background

Ligand of the EGF receptor/EGFR and ERBB4. Stimulates EGFR and ERBB4 tyrosine phosphorylation (PubMed:9419975). Contributes to inflammation, wound healing, tissue repair, and oocyte maturation by regulating angiogenesis and vascular remodeling and by stimulating cell proliferation (PubMed:24631357).