

OPN Polyclonal Antibody
Catalog # AP74227**Specification**

OPN Polyclonal Antibody - Product Information

Application	IHC
Primary Accession	P10451
Reactivity	Human, Mouse, Rat
Host	Rabbit
Clonality	Polyclonal

OPN Polyclonal Antibody - Additional Information**Gene ID** 6696**Other Names**

Osteopontin (Bone sialoprotein 1) (Nephropontin) (Secreted phosphoprotein 1) (SPP-1) (Urinary stone protein) (Uropontin)

Dilution

IHC~~IHC-p 1:50-200, ELISA 1:10000-20000

Format

Liquid in PBS containing 50% glycerol, 0.5% BSA and 0.09% (W/V) sodium azide.

Storage Conditions

-20°C

OPN Polyclonal Antibody - Protein Information**Name** SPP1**Synonyms** BNSP, OPN**Function**

Major non-collagenous bone protein that binds tightly to hydroxyapatite. Appears to form an integral part of the mineralized matrix. Probably important to cell-matrix interaction.

Cellular Location

Secreted

Tissue Location

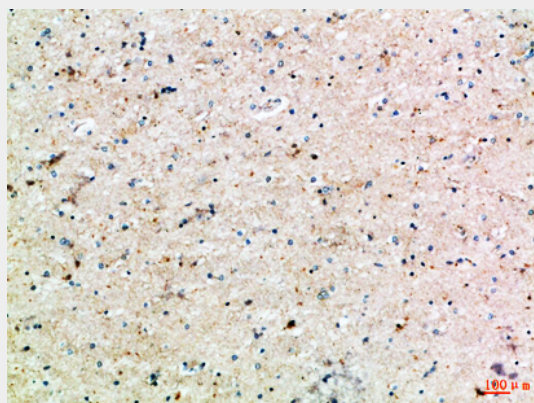
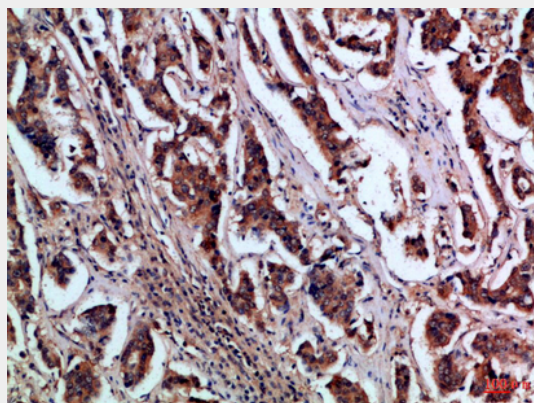
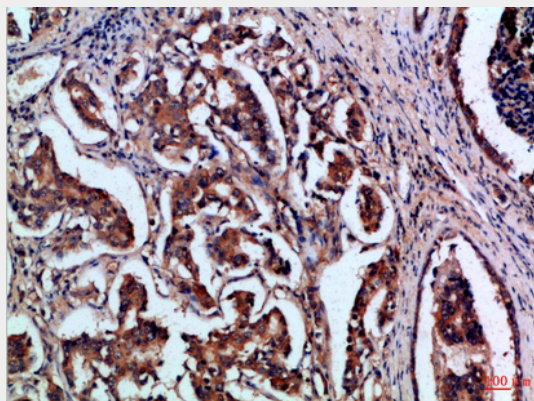
Detected in cerebrospinal fluid and urine (at protein level) (PubMed:25326458, PubMed:36213313, PubMed:37453717) Bone. Found in plasma.

OPN Polyclonal Antibody - Protocols

Provided below are standard protocols that you may find useful for product applications.

- [Western Blot](#)
- [Blocking Peptides](#)
- [Dot Blot](#)
- [Immunohistochemistry](#)
- [Immunofluorescence](#)
- [Immunoprecipitation](#)
- [Flow Cytometry](#)
- [Cell Culture](#)

OPN Polyclonal Antibody - Images



OPN Polyclonal Antibody - Background

Binds tightly to hydroxyapatite. Appears to form an integral part of the mineralized matrix.
Probably important to cell-matrix interaction.