

FAS-L Polyclonal Antibody
Catalog # AP74220**Specification****FAS-L Polyclonal Antibody - Product Information**

Application	IHC
Primary Accession	P48023
Reactivity	Human
Host	Rabbit
Clonality	Polyclonal

FAS-L Polyclonal Antibody - Additional Information

Gene ID 356

Other Names

Tumor necrosis factor ligand superfamily member 6 (Apoptosis antigen ligand) (APTL) (CD95 ligand) (CD95-L) (Fas antigen ligand) (Fas ligand) (FasL) (CD antigen CD178) [Cleaved into: Tumor necrosis factor ligand superfamily member 6, membrane form; Tumor necrosis factor ligand superfamily member 6, soluble form (Receptor-binding FasL ectodomain) (Soluble Fas ligand) (sFasL); ADAM10-processed FasL form (APL); FasL intracellular domain (FasL ICD) (SPPL2A-processed FasL form) (SPA)]

Dilution

IHC~~IHC-p 1:50-200, ELISA 1:10000-20000

Format

Liquid in PBS containing 50% glycerol, 0.5% BSA and 0.09% (W/V) sodium azide.

Storage Conditions

-20°C

FAS-L Polyclonal Antibody - Protein Information

Name FASLG

Synonyms APT1LG1, CD95L, FASL, TNFSF6

Function

Cytokine that binds to TNFRSF6/FAS, a receptor that transduces the apoptotic signal into cells (PubMed: [26334989](http://www.uniprot.org/citations/26334989), PubMed: [9228058](http://www.uniprot.org/citations/9228058)). Involved in cytotoxic T-cell-mediated apoptosis, natural killer cell-mediated apoptosis and in T-cell development (PubMed: [7528780](http://www.uniprot.org/citations/7528780), PubMed: [9228058](http://www.uniprot.org/citations/9228058), PubMed: [9427603](http://www.uniprot.org/citations/9427603)). Initiates fratricidal/suicidal activation-induced cell death (AICD) in antigen- activated T-cells contributing to the termination of immune responses (By similarity).

TNFRSF6/FAS-mediated apoptosis has also a role in the induction of peripheral tolerance (By similarity). Binds to TNFRSF6B/DcR3, a decoy receptor that blocks apoptosis (PubMed:27806260).

Cellular Location

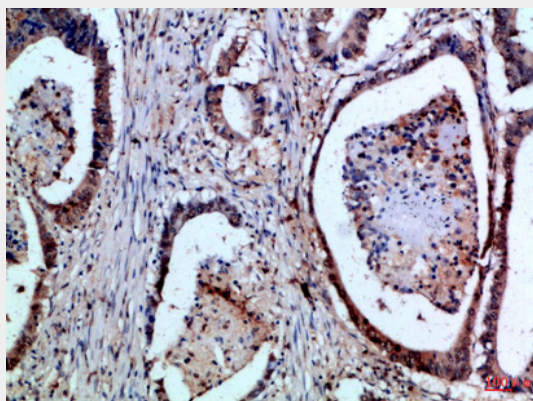
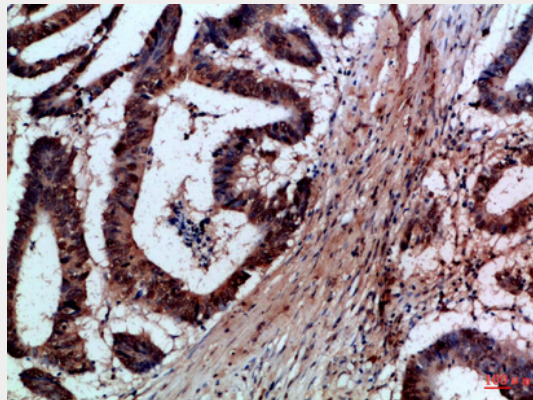
Cell membrane; Single-pass type II membrane protein. Cytoplasmic vesicle lumen Lysosome lumen. Note=Is internalized into multivesicular bodies of secretory lysosomes after phosphorylation by FGR and monoubiquitination (PubMed:17164290). Colocalizes with the SPPL2A protease at the cell membrane (PubMed:17557115) [FasL intracellular domain]: Nucleus. Note=The FasL ICD cytoplasmic form is translocated into the nucleus.

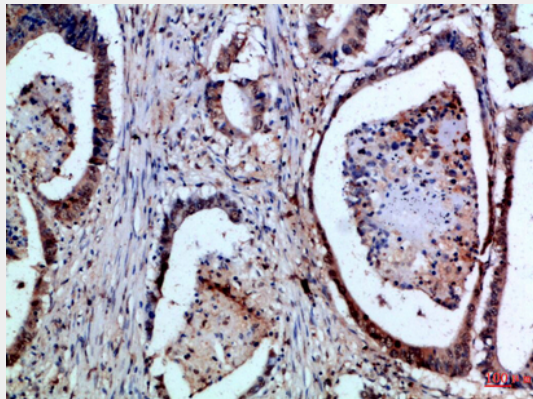
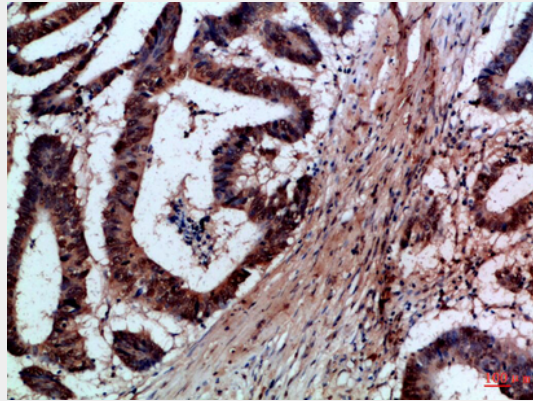
FAS-L Polyclonal Antibody - Protocols

Provided below are standard protocols that you may find useful for product applications.

- [Western Blot](#)
- [Blocking Peptides](#)
- [Dot Blot](#)
- [Immunohistochemistry](#)
- [Immunofluorescence](#)
- [Immunoprecipitation](#)
- [Flow Cytometry](#)
- [Cell Culture](#)

FAS-L Polyclonal Antibody - Images





FAS-L Polyclonal Antibody - Background

Cytokine that binds to TNFRSF6/FAS, a receptor that transduces the apoptotic signal into cells (PubMed:26334989, PubMed:9228058). Involved in cytotoxic T-cell-mediated apoptosis, natural killer cell-mediated apoptosis and in T-cell development (PubMed:9228058, PubMed:7528780, PubMed:9427603). Initiates fratricidal/suicidal activation-induced cell death (AICD) in antigen-activated T-cells contributing to the termination of immune responses (By similarity). TNFRSF6/FAS-mediated apoptosis has also a role in the induction of peripheral tolerance (By similarity). Binds to TNFRSF6B/DcR3, a decoy receptor that blocks apoptosis (PubMed:27806260).