

CD24 Polyclonal Antibody
Catalog # AP74210**Specification**

CD24 Polyclonal Antibody - Product Information

Application	IHC
Primary Accession	P25063
Reactivity	Human
Host	Rabbit
Clonality	Polyclonal

CD24 Polyclonal Antibody - Additional Information**Gene ID** 100133941**Other Names**

Signal transducer CD24 (Small cell lung carcinoma cluster 4 antigen) (CD antigen CD24)

Dilution

IHC~~IHC-p 1:50-200, ELISA 1:10000-20000

Format

Liquid in PBS containing 50% glycerol, 0.5% BSA and 0.09% (W/V) sodium azide.

Storage Conditions

-20°C

CD24 Polyclonal Antibody - Protein Information**Name** CD24**Synonyms** CD24A**Function**

May have a pivotal role in cell differentiation of different cell types. Signaling could be triggered by the binding of a lectin- like ligand to the CD24 carbohydrates, and transduced by the release of second messengers derived from the GPI-anchor. Modulates B-cell activation responses. Promotes AG-dependent proliferation of B-cells, and prevents their terminal differentiation into antibody-forming cells (PubMed:11313396). In association with SIGLEC10 may be involved in the selective suppression of the immune response to danger-associated molecular patterns (DAMPs) such as HMGB1, HSP70 and HSP90. Plays a role in the control of autoimmunity (By similarity).

Cellular Location

Cell membrane; Lipid-anchor, GPI-anchor.

Tissue Location

B-cells. Expressed in a number of B-cell lines including P32/ISH and Namalwa. Expressed in

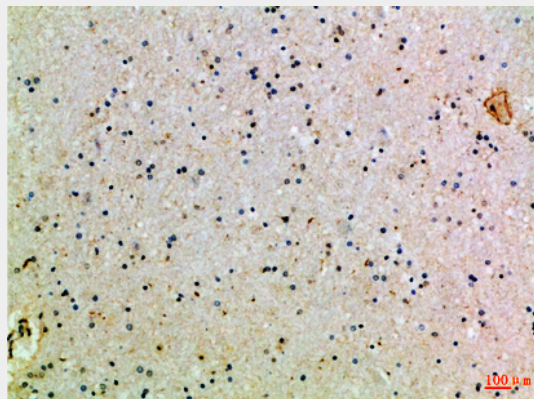
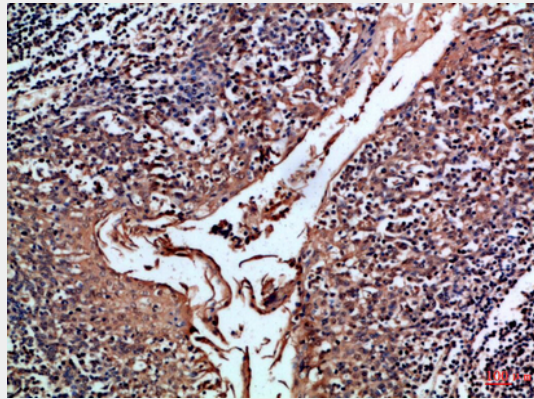
erythroleukemia cell and small cell lung carcinoma cell lines. Also expressed on the surface of T-cells.

CD24 Polyclonal Antibody - Protocols

Provided below are standard protocols that you may find useful for product applications.

- [Western Blot](#)
- [Blocking Peptides](#)
- [Dot Blot](#)
- [Immunohistochemistry](#)
- [Immunofluorescence](#)
- [Immunoprecipitation](#)
- [Flow Cytometry](#)
- [Cell Culture](#)

CD24 Polyclonal Antibody - Images



CD24 Polyclonal Antibody - Background

May have a pivotal role in cell differentiation of different cell types. Signaling could be triggered by the binding of a lectin-like ligand to the CD24 carbohydrates, and transduced by the release of second messengers derived from the GPI-anchor. Modulates B-cell activation responses. Promotes AG-dependent proliferation of B-cells, and prevents their terminal differentiation into antibody-forming cells (PubMed:11313396). In association with SIGLEC10 may be involved in the

selective suppression of the immune response to danger-associated molecular patterns (DAMPs) such as HMGB1, HSP70 and HSP90. Plays a role in the control of autoimmunity (By similarity).