

ANXA2 Antibody (C-term)
Purified Rabbit Polyclonal Antibody (Pab)
Catalog # AP7420b**Specification**

ANXA2 Antibody (C-term) - Product Information

Application	IF, WB, IHC-P,E
Primary Accession	P07355
Other Accession	A6NMY6 , Q07936 , P19620 , P07356
Reactivity	Human
Predicted	Mouse, Pig, Rat
Host	Rabbit
Clonality	Polyclonal
Isotype	Rabbit IgG
Calculated MW	38604
Antigen Region	287-313

ANXA2 Antibody (C-term) - Additional Information**Gene ID** 302**Other Names**

Annexin A2, Annexin II, Annexin-2, Calpactin I heavy chain, Calpactin-1 heavy chain, Chromobindin-8, Lipocortin II, Placental anticoagulant protein IV, PAP-IV, Protein I, p36, ANXA2, ANX2, ANX2L4, CAL1H, LPC2D

Target/Specificity

This ANXA2 antibody is generated from rabbits immunized with a KLH conjugated synthetic peptide between 287-313 amino acids from the C-terminal region of human ANXA2.

Dilution

IF~~1:10~50
WB~~1:1000
IHC-P~~1:10~50

Format

Purified polyclonal antibody supplied in PBS with 0.09% (W/V) sodium azide. This antibody is prepared by Saturated Ammonium Sulfate (SAS) precipitation followed by dialysis against PBS.

Storage

Maintain refrigerated at 2-8°C for up to 2 weeks. For long term storage store at -20°C in small aliquots to prevent freeze-thaw cycles.

Precautions

ANXA2 Antibody (C-term) is for research use only and not for use in diagnostic or therapeutic procedures.

ANXA2 Antibody (C-term) - Protein Information

Name ANXA2

Synonyms ANX2, ANX2L4, CAL1H, LPC2D

Function Calcium-regulated membrane-binding protein whose affinity for calcium is greatly enhanced by anionic phospholipids. It binds two calcium ions with high affinity. May be involved in heat-stress response. Inhibits PCSK9-enhanced LDLR degradation, probably reduces PCSK9 protein levels via a translational mechanism but also competes with LDLR for binding with PCSK9 (PubMed:[18799458](#), PubMed:[22848640](#), PubMed:[24808179](#)).

Cellular Location

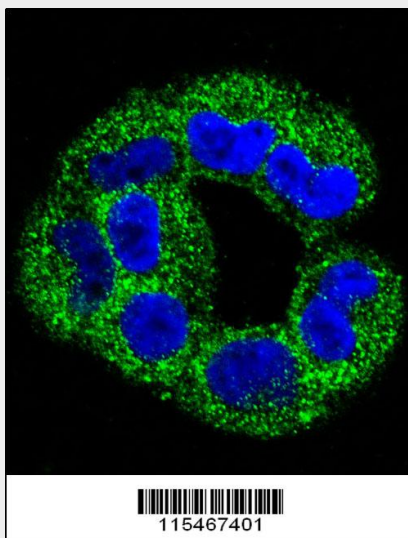
Secreted, extracellular space, extracellular matrix, basement membrane. Melanosome. Note=In the lamina beneath the plasma membrane. Identified by mass spectrometry in melanosome fractions from stage I to stage IV. Translocated from the cytoplasm to the cell surface through a Golgi-independent mechanism

ANXA2 Antibody (C-term) - Protocols

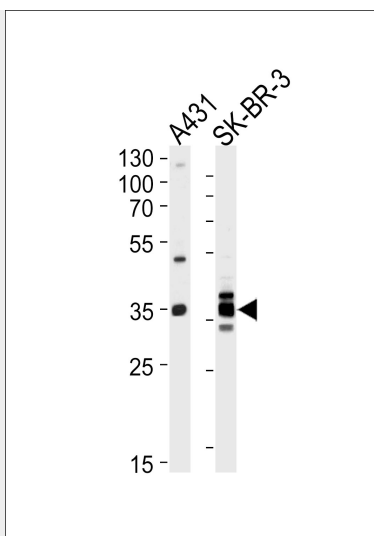
Provided below are standard protocols that you may find useful for product applications.

- [Western Blot](#)
- [Blocking Peptides](#)
- [Dot Blot](#)
- [Immunohistochemistry](#)
- [Immunofluorescence](#)
- [Immunoprecipitation](#)
- [Flow Cytometry](#)
- [Cell Culture](#)

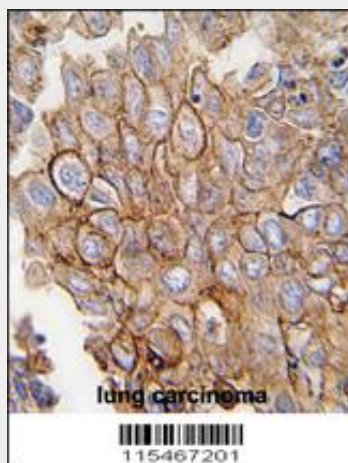
ANXA2 Antibody (C-term) - Images



Confocal immunofluorescent analysis of ANXA2 Antibody (C-term)(Cat#AP7420b) with A2058 cell followed by Alexa Fluor 488-conjugated goat anti-rabbit IgG (green). DAPI was used to stain the cell nuclear (blue).



Western blot analysis of lysates from A431, SK-BR-3 cell line (from left to right), using ANXA2 Antibody (C-term)(Cat. #AP7420b). AP7420b was diluted at 1:1000 at each lane. A goat anti-rabbit IgG H&L(HRP) at 1:5000 dilution was used as the secondary antibody. Lysates at 35ug per lane.



Formalin-fixed and paraffin-embedded human lung carcinoma tissue reacted with ANXA2 antibody (C-term) (Cat.#AP7420b), which was peroxidase-conjugated to the secondary antibody, followed by DAB staining. This data demonstrates the use of this antibody for immunohistochemistry; clinical relevance has not been evaluated.

ANXA2 Antibody (C-term) - Background

ANXA2 is a member of the annexin family. Members of this calcium-dependent phospholipid-binding protein family play a role in the regulation of cellular growth and in signal transduction pathways. This protein functions as an autocrine factor which heightens osteoclast formation and bone resorption.

ANXA2 Antibody (C-term) - References

He,K.L., J. Biol. Chem. 283 (28), 19192-19200 (2008)
Tamma,G., Pflugers Arch. 456 (4), 729-736 (2008)
Gou,D., J. Biol. Chem. 283 (19), 13156-13164 (2008)