

**CD80 Polyclonal Antibody**  
Catalog # AP74197**Specification****CD80 Polyclonal Antibody - Product Information**

Application	IHC
Primary Accession	<a href="#">P33681</a>
Reactivity	Human
Host	Rabbit
Clonality	Polyclonal

**CD80 Polyclonal Antibody - Additional Information****Gene ID** 941**Other Names**

T-lymphocyte activation antigen CD80 (Activation B7-1 antigen) (BB1) (CTLA-4 counter-receptor B7.1) (B7) (CD antigen CD80)

**Dilution**

IHC~~IHC-p 1:50-200, ELISA 1:10000-20000

**Format**

Liquid in PBS containing 50% glycerol, 0.5% BSA and 0.09% (W/V) sodium azide.

**Storage Conditions**

-20°C

**CD80 Polyclonal Antibody - Protein Information****Name** CD80**Synonyms** CD28LG, CD28LG1, LAB7**Function**

Costimulatory molecule that belongs to the immunoglobulin superfamily that plays an important role in T-lymphocyte activation (PubMed: [38467718](http://www.uniprot.org/citations/38467718)). Acts as the primary auxiliary signal augmenting the MHC/TCR signal in naive T-cells together with the CD28 receptor which is constitutively expressed on the cell surface of T-cells (PubMed: [12196291](http://www.uniprot.org/citations/12196291)). In turn, activates different signaling pathways such as NF-kappa-B or MAPK leading to the production of different cytokines (PubMed: [10438913](http://www.uniprot.org/citations/10438913)). In addition, CD28/CD80 costimulatory signal stimulates glucose metabolism and ATP synthesis of T-cells by activating the PI3K/Akt signaling pathway (PubMed: [12121659](http://www.uniprot.org/citations/12121659)). Acts also as a regulator of PDL1/PDCD1 interactions to limit excess engagement of PDL1 and its inhibitory role in immune responses (PubMed: [36727298](http://www.uniprot.org/citations/36727298))

target="\_blank">36727298</a>). Expressed on B-cells, plays a critical role in regulating interactions between B-cells and T-cells in both early and late germinal center responses, which are crucial for the generation of effective humoral immune responses (By similarity).

#### Cellular Location

Cell membrane; Single-pass type I membrane protein

#### Tissue Location

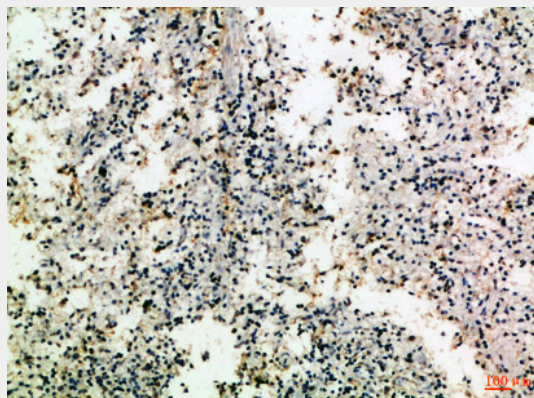
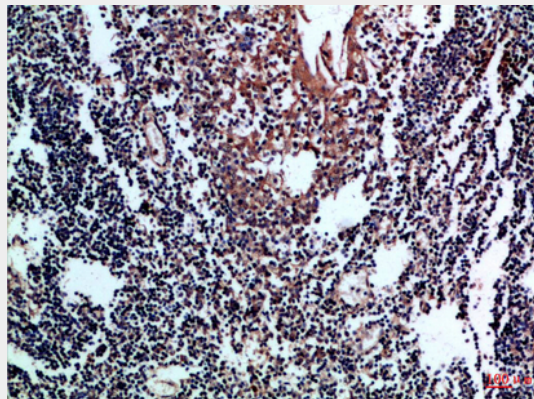
Expressed on activated B-cells, macrophages and dendritic cells

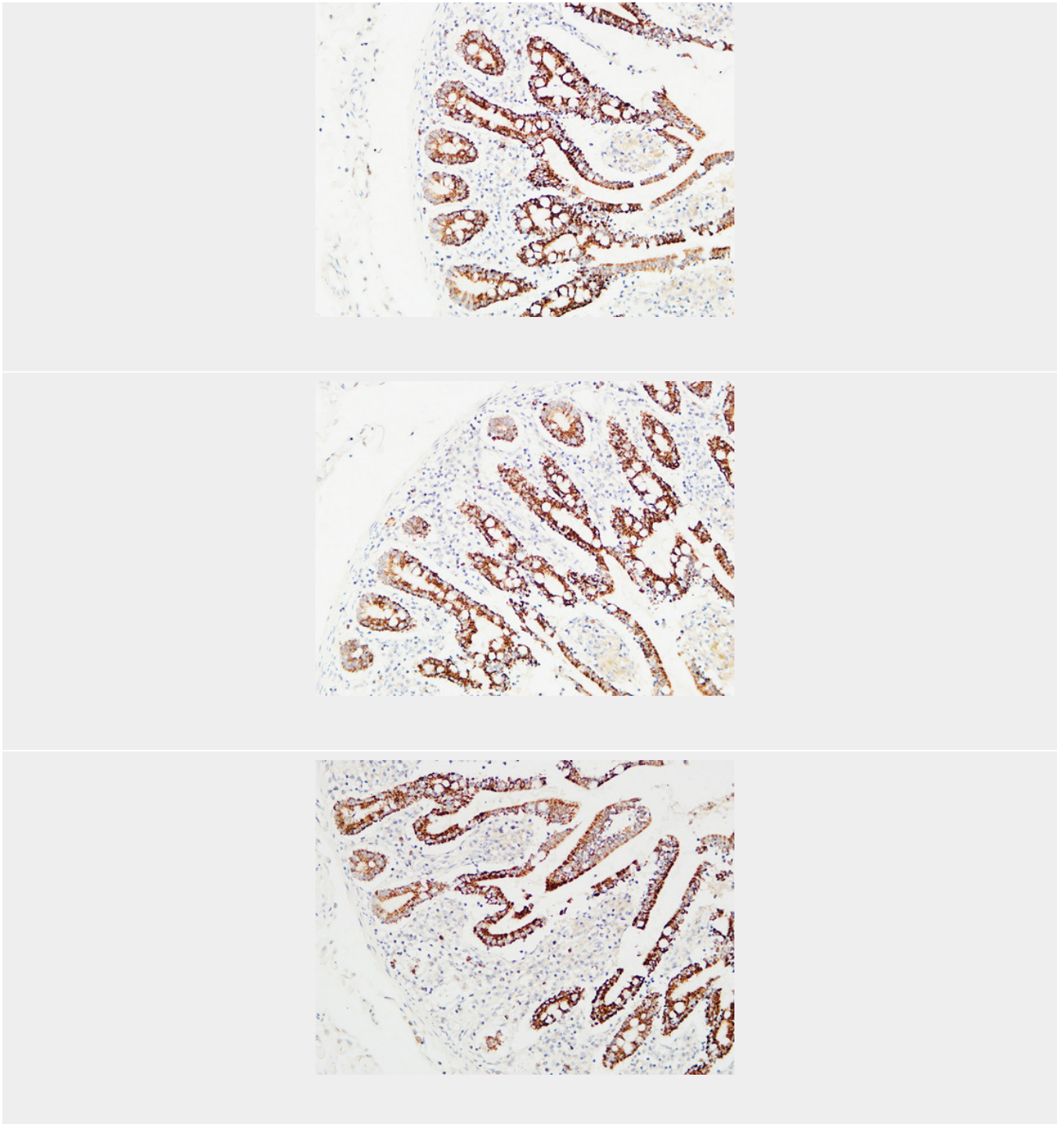
### CD80 Polyclonal Antibody - Protocols

Provided below are standard protocols that you may find useful for product applications.

- [Western Blot](#)
- [Blocking Peptides](#)
- [Dot Blot](#)
- [Immunohistochemistry](#)
- [Immunofluorescence](#)
- [Immunoprecipitation](#)
- [Flow Cytometry](#)
- [Cell Culture](#)

### CD80 Polyclonal Antibody - Images





### **CD80 Polyclonal Antibody - Background**

Involved in the costimulatory signal essential for T- lymphocyte activation. T-cell proliferation and cytokine production is induced by the binding of CD28, binding to CTLA-4 has opposite effects and inhibits T-cell activation.