

**Tubulin  $\gamma$  Polyclonal Antibody**  
Catalog # AP74194**Specification**

---

**Tubulin  $\gamma$  Polyclonal Antibody - Product Information**

Application	IHC
Primary Accession	<a href="#">P23258</a>
Reactivity	Human, Mouse, Rat
Host	Rabbit
Clonality	Polyclonal

**Tubulin  $\gamma$  Polyclonal Antibody - Additional Information****Gene ID** 7283**Other Names**

Tubulin gamma-1 chain (Gamma-1-tubulin) (Gamma-tubulin complex component 1) (GCP-1)

**Dilution**

IHC~~IHC-p 1:50-200, ELISA 1:10000-20000

**Format**

Liquid in PBS containing 50% glycerol, 0.5% BSA and 0.09% (W/V) sodium azide.

**Storage Conditions**

-20°C

**Tubulin  $\gamma$  Polyclonal Antibody - Protein Information****Name** TUBG1 ([HGNC:12417](#))**Synonyms** TUBG**Function**

Tubulin is the major constituent of microtubules. The gamma chain is found at microtubule organizing centers (MTOC) such as the spindle poles or the centrosome. Pericentriolar matrix component that regulates alpha/beta chain minus-end nucleation, centrosome duplication and spindle formation.

**Cellular Location**

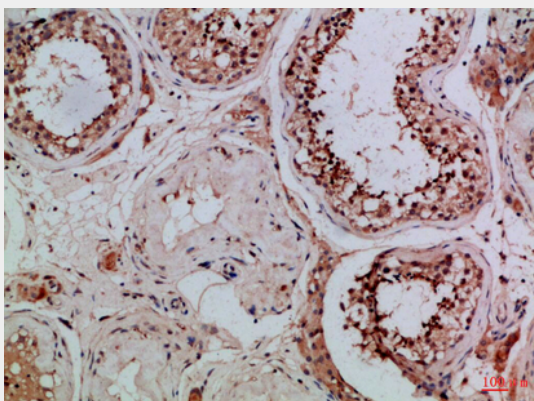
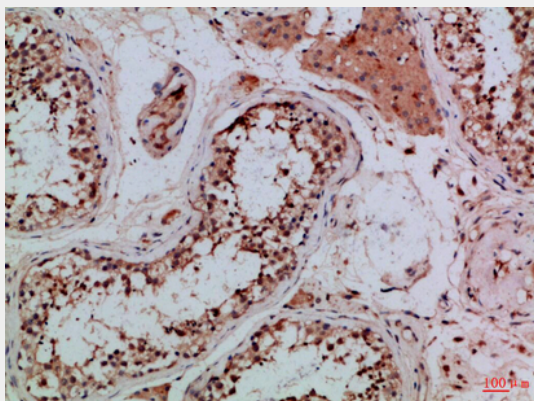
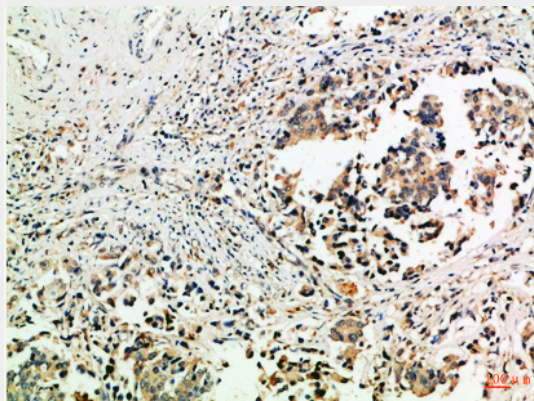
Cytoplasm, cytoskeleton, microtubule organizing center, centrosome. Cytoplasm, cytoskeleton, spindle. Note=Localizes to mitotic spindle microtubules.

**Tubulin  $\gamma$  Polyclonal Antibody - Protocols**

Provided below are standard protocols that you may find useful for product applications.

- [Western Blot](#)
- [Blocking Peptides](#)
- [Dot Blot](#)
- [Immunohistochemistry](#)
- [Immunofluorescence](#)
- [Immunoprecipitation](#)
- [Flow Cytometry](#)
- [Cell Culture](#)

### Tubulin $\gamma$ Polyclonal Antibody - Images



### Tubulin $\gamma$ Polyclonal Antibody - Background

Tubulin is the major constituent of microtubules. The gamma chain is found at microtubule organizing centers (MTOC) such as the spindle poles or the centrosome. Pericentriolar matrix component that regulates alpha/beta chain minus-end nucleation, centrosome duplication and spindle formation.