

**Cystatin B Polyclonal Antibody**  
Catalog # AP74192**Specification**

---

**Cystatin B Polyclonal Antibody - Product Information**

Application	IHC
Primary Accession	<a href="#">P04080</a>
Reactivity	Human
Host	Rabbit
Clonality	Polyclonal

**Cystatin B Polyclonal Antibody - Additional Information****Gene ID** 1476**Other Names**

Cystatin-B (CPI-B) (Liver thiol proteinase inhibitor) (Stefin-B)

**Dilution**

IHC~~IHC-p 1:50-200, ELISA 1:10000-20000

**Format**

Liquid in PBS containing 50% glycerol, 0.5% BSA and 0.09% (W/V) sodium azide.

**Storage Conditions**

-20°C

**Cystatin B Polyclonal Antibody - Protein Information****Name** CSTB**Synonyms** CST6, STFB**Function**

This is an intracellular thiol proteinase inhibitor. Tightly binding reversible inhibitor of cathepsins L, H and B.

**Cellular Location**

Cytoplasm. Nucleus

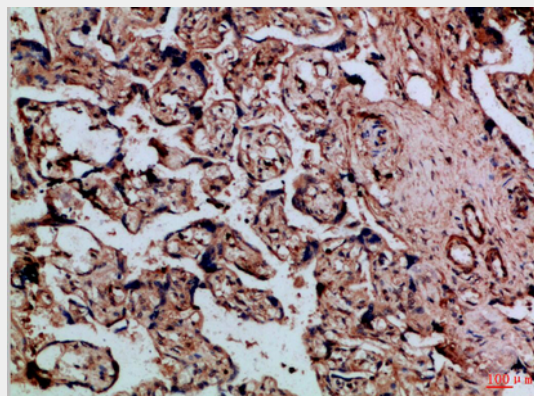
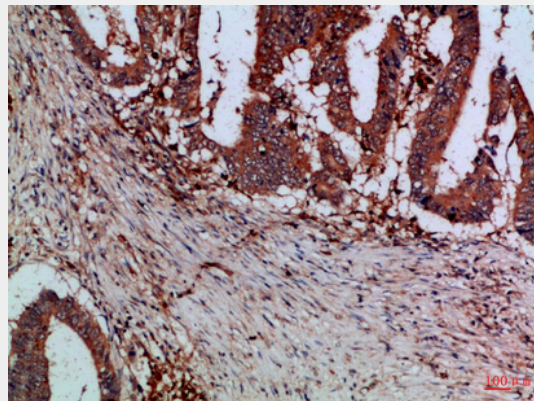
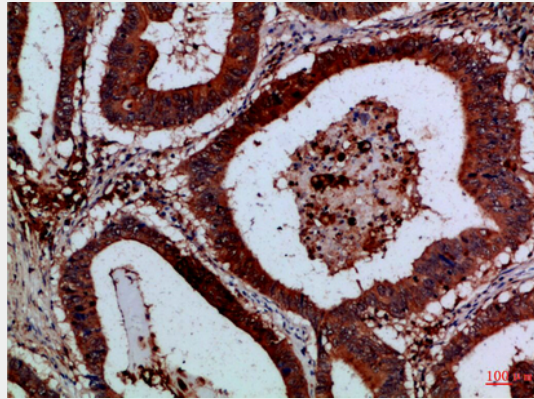
**Cystatin B Polyclonal Antibody - Protocols**

Provided below are standard protocols that you may find useful for product applications.

- [Western Blot](#)
- [Blocking Peptides](#)

- [Dot Blot](#)
- [Immunohistochemistry](#)
- [Immunofluorescence](#)
- [Immunoprecipitation](#)
- [Flow Cytometry](#)
- [Cell Culture](#)

### Cystatin B Polyclonal Antibody - Images



### Cystatin B Polyclonal Antibody - Background

This is an intracellular thiol proteinase inhibitor. Tightly binding reversible inhibitor of cathepsins L,

H and B.