

GM-CSF Polyclonal Antibody
Catalog # AP74190**Specification**

GM-CSF Polyclonal Antibody - Product Information

Application	IHC
Primary Accession	P04141
Reactivity	Human
Host	Rabbit
Clonality	Polyclonal

GM-CSF Polyclonal Antibody - Additional Information**Gene ID** 1437**Other Names**

Granulocyte-macrophage colony-stimulating factor (GM-CSF) (Colony-stimulating factor) (CSF) (Molgramostin) (Sargramostim)

Dilution

IHC~~IHC-p 1:50-200, ELISA 1:10000-20000

Format

Liquid in PBS containing 50% glycerol, 0.5% BSA and 0.09% (W/V) sodium azide.

Storage Conditions

-20°C

GM-CSF Polyclonal Antibody - Protein Information**Name** CSF2**Synonyms** GMCSF**Function**

Cytokine that stimulates the growth and differentiation of hematopoietic precursor cells from various lineages, including granulocytes, macrophages, eosinophils and erythrocytes.

Cellular Location

Secreted

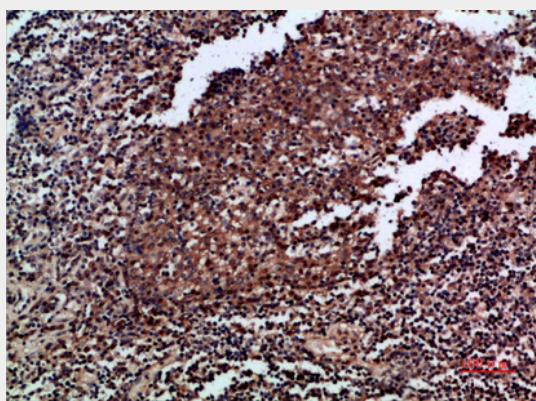
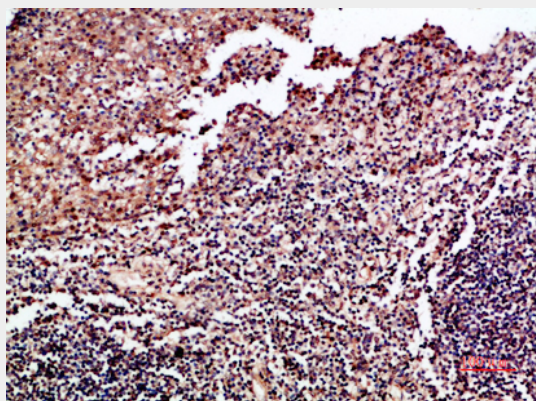
GM-CSF Polyclonal Antibody - Protocols

Provided below are standard protocols that you may find useful for product applications.

- [Western Blot](#)

- [Blocking Peptides](#)
- [Dot Blot](#)
- [Immunohistochemistry](#)
- [Immunofluorescence](#)
- [Immunoprecipitation](#)
- [Flow Cytometry](#)
- [Cell Culture](#)

GM-CSF Polyclonal Antibody - Images



GM-CSF Polyclonal Antibody - Background

Cytokine that stimulates the growth and differentiation of hematopoietic precursor cells from various lineages, including granulocytes, macrophages, eosinophils and erythrocytes.