

**ATG10 Polyclonal Antibody**  
Catalog # AP74188

**Specification**

---

**ATG10 Polyclonal Antibody - Product Information**

Application	IHC
Primary Accession	<a href="#">Q9H0Y0</a>
Reactivity	Human
Host	Rabbit
Clonality	Polyclonal

**ATG10 Polyclonal Antibody - Additional Information**

**Gene ID** 83734

**Other Names**

Ubiquitin-like-conjugating enzyme ATG10 (EC 6.3.2.-) (Autophagy-related protein 10) (APG10-like)

**Dilution**

IHC~~IHC-p 1:50-200, ELISA 1:10000-20000

**Format**

Liquid in PBS containing 50% glycerol, 0.5% BSA and 0.09% (W/V) sodium azide.

**Storage Conditions**

-20°C

**ATG10 Polyclonal Antibody - Protein Information**

**Name** ATG10

**Synonyms** APG10L

**Function**

E2-like enzyme involved in autophagy. Acts as an E2-like enzyme that catalyzes the conjugation of ATG12 to ATG5. ATG12 conjugation to ATG5 is required for autophagy. Likely serves as an ATG5-recognition molecule. Not involved in ATG12 conjugation to ATG3 (By similarity). Plays a role in adenovirus-mediated cell lysis.

**Cellular Location**

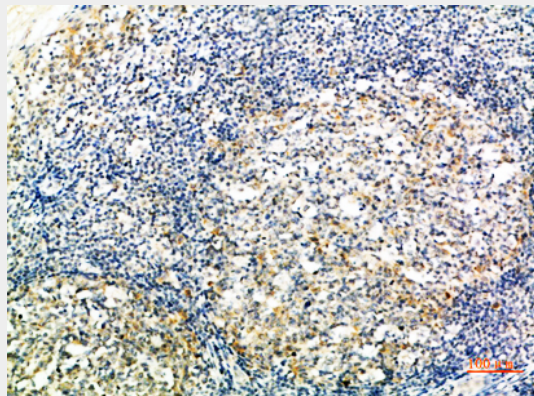
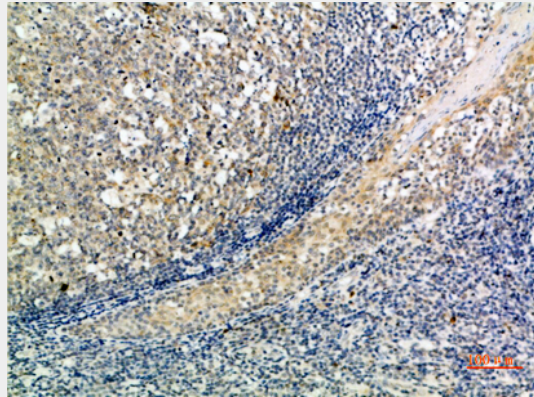
Cytoplasm.

**ATG10 Polyclonal Antibody - Protocols**

Provided below are standard protocols that you may find useful for product applications.

- [Western Blot](#)
- [Blocking Peptides](#)
- [Dot Blot](#)
- [Immunohistochemistry](#)
- [Immunofluorescence](#)
- [Immunoprecipitation](#)
- [Flow Cytometry](#)
- [Cell Culture](#)

### ATG10 Polyclonal Antibody - Images



### ATG10 Polyclonal Antibody - Background

E2-like enzyme involved in autophagy. Acts as an E2-like enzyme that catalyzes the conjugation of ATG12 to ATG5. ATG12 conjugation to ATG5 is required for autophagy. Likely serves as an ATG5-recognition molecule. Not involved in ATG12 conjugation to ATG3 (By similarity). Plays a role in adenovirus-mediated cell lysis.