

PACAP Polyclonal Antibody
Catalog # AP74181**Specification**

PACAP Polyclonal Antibody - Product Information

Application	IHC
Primary Accession	Q8WU39
Reactivity	Human
Host	Rabbit
Clonality	Polyclonal

PACAP Polyclonal Antibody - Additional Information**Gene ID** 51237**Other Names**

Plasma cell-induced resident endoplasmic reticulum protein (Plasma cell-induced resident ER protein) (pERp1) (Proapoptotic caspase adapter protein)

Dilution

IHC~~IHC-p 1:50-200, ELISA 1:10000-20000

Format

Liquid in PBS containing 50% glycerol, 0.5% BSA and 0.09% (W/V) sodium azide.

Storage Conditions

-20°C

PACAP Polyclonal Antibody - Protein Information**Name** MZB1**Synonyms** MEDA7, PACAP**Function**

Associates with immunoglobulin M (IgM) heavy and light chains and promotes IgM assembly and secretion. May exert its effect by acting as a molecular chaperone or as an oxidoreductase as it displays a low level of oxidoreductase activity (By similarity). Isoform 2 may be involved in regulation of apoptosis. Helps to diversify peripheral B- cell functions by regulating Ca(2+) stores, antibody secretion and integrin activation.

Cellular Location

[Isoform 1]: Endoplasmic reticulum lumen. Secreted

Tissue Location

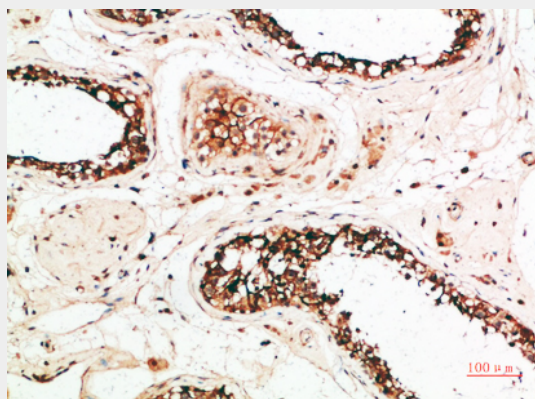
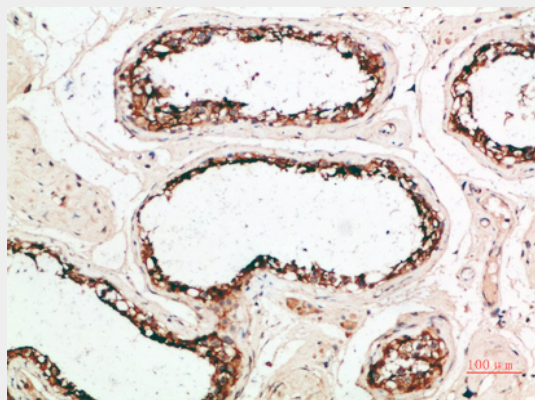
Widely expressed with highest levels in adult brain, small intestine and lymphoid tissues such as thymus and spleen Expression is frequently lower in intestinal-type gastric cancer. In obese patients, more abundant in omental than in subcutaneous fat

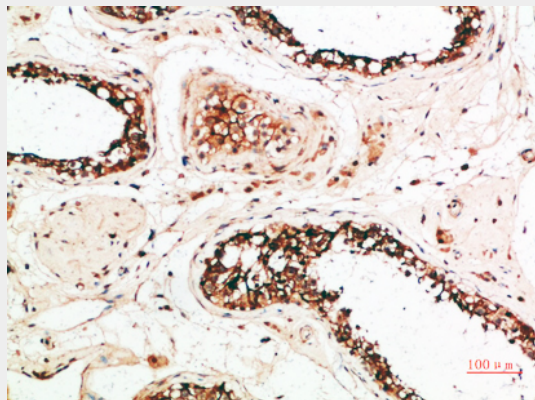
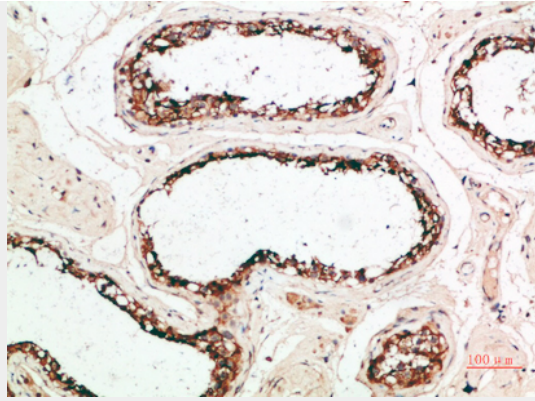
PACAP Polyclonal Antibody - Protocols

Provided below are standard protocols that you may find useful for product applications.

- [Western Blot](#)
- [Blocking Peptides](#)
- [Dot Blot](#)
- [Immunohistochemistry](#)
- [Immunofluorescence](#)
- [Immunoprecipitation](#)
- [Flow Cytometry](#)
- [Cell Culture](#)

PACAP Polyclonal Antibody - Images





PACAP Polyclonal Antibody - Background

Associates with immunoglobulin M (IgM) heavy and light chains and promotes IgM assembly and secretion. May exert its effect by acting as a molecular chaperone or as an oxidoreductase as it displays a low level of oxidoreductase activity (By similarity). Isoform 2 may be involved in regulation of apoptosis. Helps to diversify peripheral B-cell functions by regulating Ca(2+) stores, antibody secretion and integrin activation.